

Product datasheet

Anti-CD3 antibody [UCHT1] (PE/Cy7®) ab81992

1 Image

Overview

<b>Product name</b>	Anti-CD3 antibody [UCHT1] (PE/Cy7®)
<b>Description</b>	Mouse monoclonal [UCHT1] to CD3 (PE/Cy7®)
<b>Host species</b>	Mouse
<b>Conjugation</b>	PE/Cy7®. Ex: 496nm, Em: 774nm
<b>Specificity</b>	Reacts with the 20 kDa e chain of the CD3/TCR complex
<b>Tested applications</b>	<b>Suitable for:</b> Flow Cyt, IHC-Fr, IP
<b>Species reactivity</b>	<b>Reacts with:</b> Human
<b>Immunogen</b>	Human infant thymocytes and Sezary cells
<b>Positive control</b>	Flow Cyt: Human peripheral blood lymphocytes.
<b>General notes</b>	This product or portions thereof is manufactured under license from Carnegie Mellon University under U.S. Patent Number 5,268,486 and related patents. Cy and CyDye are trademarks of GE Healthcare Limited.

Properties

<b>Form</b>	Liquid
<b>Storage instructions</b>	Shipped at 4°C. Store at +4°C. Do Not Freeze. Store In the Dark.
<b>Storage buffer</b>	pH: 7.20 Preservative: 0.09% Sodium azide Constituents: 0.1% Gelatin, 0.88% Sodium chloride, 0.12% Monobasic dihydrogen sodium phosphate
<b>Purity</b>	Affinity purified
<b>Purification notes</b>	Purified from TCS
<b>Clonality</b>	Monoclonal
<b>Clone number</b>	UCHT1
<b>Isotype</b>	IgG1

Applications

Our [Abpromise guarantee](#) covers the use of **ab81992** in the following tested applications.

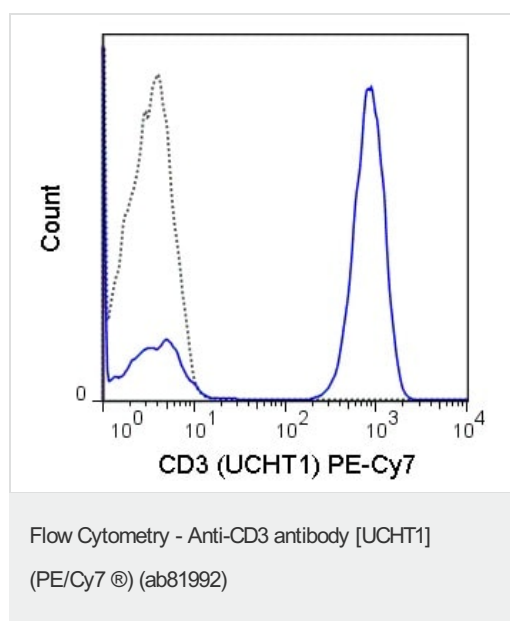
The application notes include recommended starting dilutions; optimal dilutions/concentrations should be determined by the end user.

Application	Abreviews	Notes
Flow Cyt		Use 5µl for 10 <sup>5-8</sup> cells. Use 5µl in a final volume of 100µl. <a href="#">ab154457</a> - Mouse monoclonal IgG1, is suitable for use as an isotype control with this antibody.
IHC-Fr		Use at an assay dependent concentration.
IP		Use at an assay dependent concentration.

## Target

<b>Function</b>	The CD3 complex mediates signal transduction.
<b>Involvement in disease</b>	Defects in CD3D are a cause of severe combined immunodeficiency autosomal recessive T-cell-negative/B-cell-positive/NK-cell-positive (T(-)/B(+)/NK(+)) SCID [MIM:608971]. A form of severe combined immunodeficiency (SCID), a genetically and clinically heterogeneous group of rare congenital disorders characterized by impairment of both humoral and cell-mediated immunity, leukopenia, and low or absent antibody levels. Patients present in infancy recurrent, persistent infections by opportunistic organisms. The common characteristic of all types of SCID is absence of T-cell-mediated cellular immunity due to a defect in T-cell development.
<b>Sequence similarities</b>	Contains 1 ITAM domain.
<b>Cellular localization</b>	Membrane.

## Images



Human peripheral blood lymphocytes stained with 5µL (0.5µg) ab81992 (solid line) or 0.5µg PE-Cy7-conjugated mouse IgG1 isotype control (dashed line).

**Please note:** All products are "FOR RESEARCH USE ONLY. NOT FOR USE IN DIAGNOSTIC PROCEDURES"

## **Our Abpromise to you: Quality guaranteed and expert technical support**

---

- Replacement or refund for products not performing as stated on the datasheet
- Valid for 12 months from date of delivery
- Response to your inquiry within 24 hours
  
- We provide support in Chinese, English, French, German, Japanese and Spanish
- Extensive multi-media technical resources to help you
- We investigate all quality concerns to ensure our products perform to the highest standards

If the product does not perform as described on this datasheet, we will offer a refund or replacement. For full details of the Abpromise, please visit <https://www.abcam.com/abpromise> or contact our technical team.

## **Terms and conditions**

---

- Guarantee only valid for products bought direct from Abcam or one of our authorized distributors