

## Product datasheet

# Anti-CD30 antibody [Ber-H2], prediluted ab871

[1 References](#) [2 Images](#)

### Overview

---

<b>Product name</b>	Anti-CD30 antibody [Ber-H2], prediluted
<b>Description</b>	Mouse monoclonal [Ber-H2] to CD30, prediluted
<b>Host species</b>	Mouse
<b>Specificity</b>	This antibody reacts with mononuclear cells in Hodgkin lymphoma, Reed-Sternberg cells and most anaplastic large cell lymphomas. It stains large cells localized around the B cell in the lymphoid tissues. This antibody stains the cell surface and the golgi region in the cells.
<b>Tested applications</b>	<b>Suitable for:</b> IHC-P
<b>Species reactivity</b>	<b>Reacts with:</b> Human
<b>Immunogen</b>	Tissue, cells or virus corresponding to CD30. BALB/C mice were injected with L428 cell line cells.
<b>General notes</b>	<p>The Life Science industry has been in the grips of a reproducibility crisis for a number of years. Abcam is leading the way in addressing this with our range of recombinant monoclonal antibodies and knockout edited cell lines for gold-standard validation. Please check that this product meets your needs before purchasing.</p> <p>If you have any questions, special requirements or concerns, please send us an inquiry and/or contact our Support team ahead of purchase. Recommended alternatives for this product can be found below, along with publications, customer reviews and Q&amp;As</p>

### Properties

---

<b>Form</b>	Liquid
<b>Storage instructions</b>	Shipped at 4°C. Store at +4°C. Do Not Freeze.
<b>Storage buffer</b>	pH: 7.3 Preservative: 0.05% Sodium azide  Inert stabilizer
<b>Clonality</b>	Monoclonal
<b>Clone number</b>	Ber-H2
<b>Myeloma</b>	unknown
<b>Isotype</b>	IgG1
<b>Light chain type</b>	kappa

## Applications

### The Abpromise guarantee

Our [Abpromise guarantee](#) covers the use of ab871 in the following tested applications.

The application notes include recommended starting dilutions; optimal dilutions/concentrations should be determined by the end user.

Application	Abreviews	Notes
IHC-P		Use at an assay dependent concentration. This antibody has been pretitered and quality controlled to work on formalin-fixed paraffin-embedded as well as acetone fixed cryostat tissue sections. No further titration is required. We suggest an incubation period of 30-60 minutes at room temperature. However, depending upon the fixation conditions and the staining system employed, optimal incubation should be

## Target

### Function

Receptor for TNFSF8/CD30L. May play a role in the regulation of cellular growth and transformation of activated lymphoblasts. Regulates gene expression through activation of NF-kappa-B.

### Sequence similarities

Contains 6 TNFR-Cys repeats.

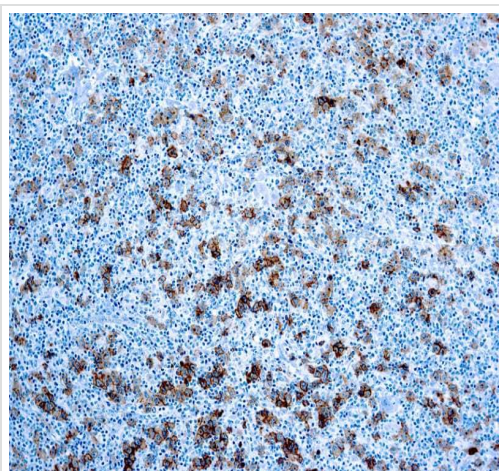
### Post-translational modifications

Phosphorylated on serine and tyrosine residues.

### Cellular localization

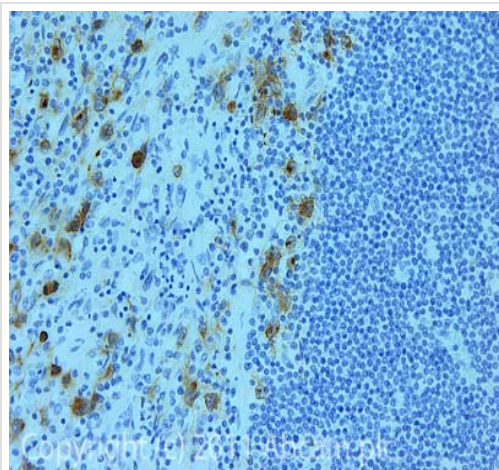
Cytoplasm and Cell membrane.

## Images



Formalin-fixed, paraffin-embedded human Hodgkin's lymphoma tissue stained for CD30 using ab871 in immunohistochemical analysis. Antigen retrieval with EDTA buffer pH 8.0

Immunohistochemistry (Formalin/PFA-fixed paraffin-embedded sections) - Anti-CD30 antibody [Ber-H2], prediluted (ab871)



Immunohistochemistry (Formalin/PFA-fixed paraffin-embedded sections) - Anti-CD30 antibody [Ber-H2], prediluted (ab871)

IHC image of ab871 staining in Hodgkin lymphoma formalin fixed paraffin embedded tissue section, performed on a Leica Bond™ system using the standard protocol F. The section was pre-treated using heat mediated antigen retrieval with sodium citrate buffer (pH6, epitope retrieval solution 1) for 20 mins. The section was then incubated with ab871, 1µg/ml, for 15 mins at room temperature and detected using an HRP conjugated compact polymer system. DAB was used as the chromogen. The section was then counterstained with haematoxylin and mounted with DPX.

For other IHC staining systems (automated and non-automated) customers should optimize variable parameters such as antigen retrieval conditions, primary antibody concentration and antibody incubation times.

**Please note:** All products are "FOR RESEARCH USE ONLY. NOT FOR USE IN DIAGNOSTIC PROCEDURES"

### Our Abpromise to you: Quality guaranteed and expert technical support

---

- Replacement or refund for products not performing as stated on the datasheet
- Valid for 12 months from date of delivery
- Response to your inquiry within 24 hours
- We provide support in Chinese, English, French, German, Japanese and Spanish
- Extensive multi-media technical resources to help you
- We investigate all quality concerns to ensure our products perform to the highest standards

If the product does not perform as described on this datasheet, we will offer a refund or replacement. For full details of the Abpromise, please visit <https://www.abcam.com/abpromise> or contact our technical team.

### Terms and conditions

---

- Guarantee only valid for products bought direct from Abcam or one of our authorized distributors