

## Product datasheet

# Anti-CD300C antibody ab232789

7 Images

### Overview

<b>Product name</b>	Anti-CD300C antibody
<b>Description</b>	Rabbit polyclonal to CD300C
<b>Host species</b>	Rabbit
<b>Tested applications</b>	<b>Suitable for:</b> WB, IHC-P
<b>Species reactivity</b>	<b>Reacts with:</b> Rat, Human, Pig
<b>Immunogen</b>	<p>Recombinant fragment (His-T7-tag) corresponding to Human CD300C aa 21-183 (extracellular). Two N-terminal tags. Expressed in E. coli.</p> <p>Sequence:</p> <p>GYFPLSHPMTVAGPVGGSLSVQCRYEKEHRTLKFWCR            PPQILRCDKIVE            TKGSAGKRNGRVSIRDSPANLSFTVTLENLTEEDAGTYWC            GVDTPWLRDF            HDPIVEEVSVPAGTTTASSPQSSMGTS GPPTKLPVHT            WPSVTRKDSPE PSPHPGSLFSNVR</p>

Database link: [Q08708](#)

 [Run BLAST with](#)

 [Run BLAST with](#)

**Positive control** WB: HepG2 cell lysate. Rat and pig liver tissue lysate. Recombinant human CD300C protein.  
 IHC-P: Human liver, liver cancer, kidney, breast cancer and stomach tissue.

**General notes**

Reproducibility is key to advancing scientific discovery and accelerating scientists' next breakthrough.

Abcam is leading the way with our range of recombinant antibodies, knockout-validated antibodies and knockout cell lines, all of which support improved reproducibility.

We are also planning to innovate the way in which we present recommended applications and species on our product datasheets, so that only applications & species that have been tested in our own labs, our suppliers or by selected trusted collaborators are covered by our Abpromise™ guarantee.

In preparation for this, we have started to update the applications & species that this product is Abpromise guaranteed for.

We are also updating the applications & species that this product has been “predicted to work with,” however this information is not covered by our Abpromise guarantee.

Applications & species from publications and Abreviews that have not been tested in our own

labs or in those of our suppliers are not covered by the Abpromise guarantee.

Please check that this product meets your needs before purchasing. If you have any questions, special requirements or concerns, please send us an inquiry and/or contact our Support team ahead of purchase. Recommended alternatives for this product can be found below, as well as customer reviews and Q&As.

## Properties

---

<b>Form</b>	Liquid
<b>Storage instructions</b>	Shipped at 4°C. Store at +4°C short term (1-2 weeks). Upon delivery aliquot. Store at -20°C long term. Avoid freeze / thaw cycle.
<b>Storage buffer</b>	pH: 7.40 Preservative: 0.02% Sodium azide Constituents: PBS, 50% Glycerol
<b>Purity</b>	Protein A purified
<b>Purification notes</b>	Antigen-specific affinity chromatography followed by Protein A affinity chromatography.
<b>Clonality</b>	Polyclonal
<b>Isotype</b>	IgG

## Applications

---

Our [Abpromise guarantee](#) covers the use of **ab232789** in the following tested applications.

The application notes include recommended starting dilutions; optimal dilutions/concentrations should be determined by the end user.

Application	Abreviews	Notes
WB		Use a concentration of 0.5 - 2 µg/ml.
IHC-P		Use a concentration of 5 - 20 µg/ml.

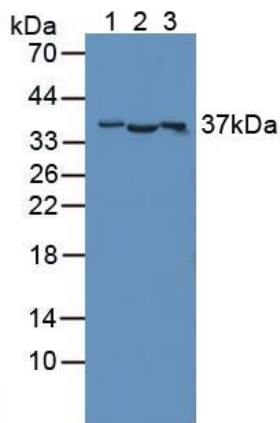
## Target

---

<b>Tissue specificity</b>	Present on the surface of monocytes, neutrophils, a proportion of peripheral blood T- and B-lymphocytes and lymphocytic cell lines.
<b>Sequence similarities</b>	Belongs to the CD300 family. Contains 1 Ig-like V-type (immunoglobulin-like) domain.
<b>Cellular localization</b>	Cell membrane.

## Images

---



Western blot - Anti-CD300C antibody (ab232789)

**All lanes :** Anti-CD300C antibody (ab232789) at 2 µg/ml

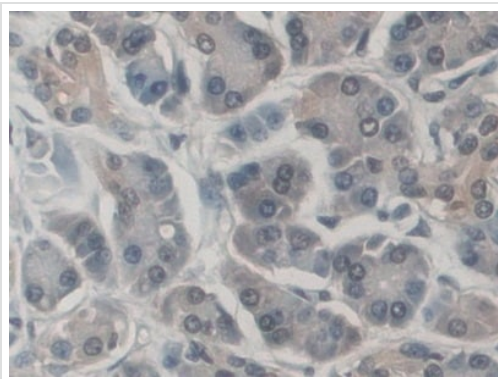
**Lane 1 :** HepG2 (Human liver hepatocellular carcinoma cell line) cell lysate

**Lane 2 :** Rat liver tissue lysate

**Lane 3 :** Pig liver tissue lysate

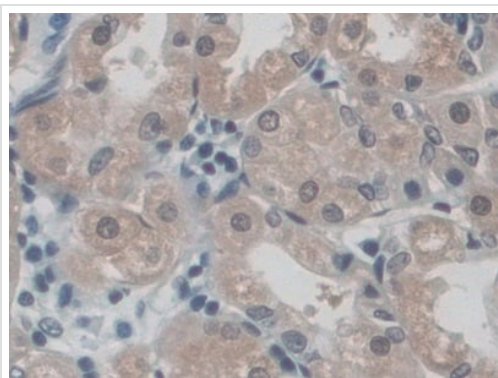
**Secondary**

**All lanes :** HRP-linked Guinea pig anti-Rabbit at 1/2000 dilution



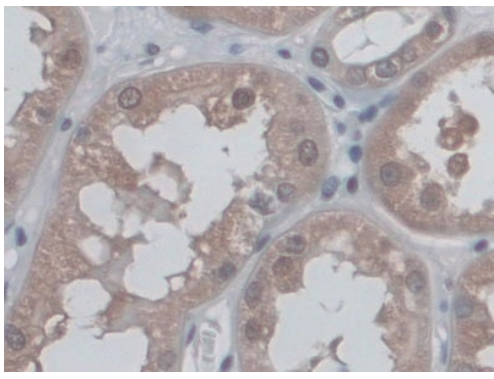
Immunohistochemistry (Formalin/PFA-fixed paraffin-embedded sections) - Anti-CD300C antibody (ab232789)

Formalin-fixed, paraffin-embedded human pancreatic cancer tissue stained for CD300C with ab232789 at 20 µg/ml in immunohistochemical analysis. DAB staining.



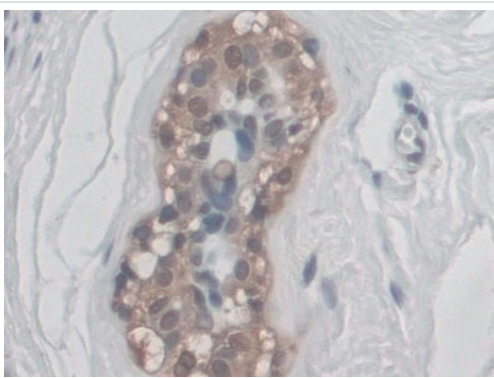
Immunohistochemistry (Formalin/PFA-fixed paraffin-embedded sections) - Anti-CD300C antibody (ab232789)

Formalin-fixed, paraffin-embedded human stomach tissue stained for CD300C with ab232789 at 20 µg/ml in immunohistochemical analysis. DAB staining.



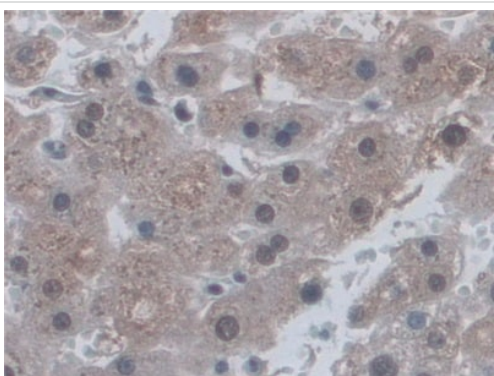
Immunohistochemistry (Formalin/PFA-fixed paraffin-embedded sections) - Anti-CD300C antibody (ab232789)

Formalin-fixed, paraffin-embedded human kidney tissue stained for CD300C with ab232789 at 20  $\mu\text{g/ml}$  in immunohistochemical analysis. DAB staining.



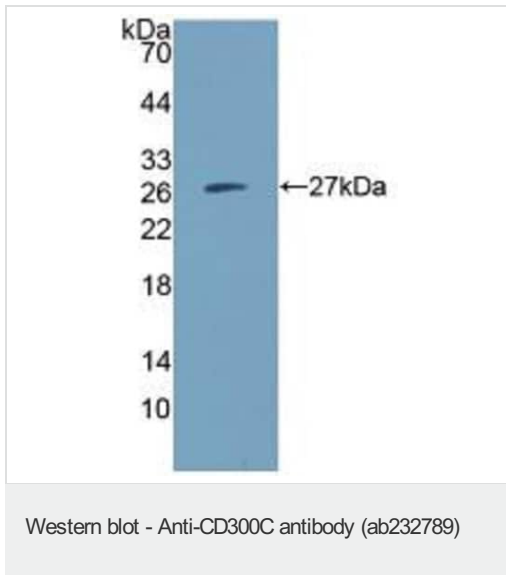
Immunohistochemistry (Formalin/PFA-fixed paraffin-embedded sections) - Anti-CD300C antibody (ab232789)

Formalin-fixed, paraffin-embedded human breast cancer tissue stained for CD300C with ab232789 at 20  $\mu\text{g/ml}$  in immunohistochemical analysis. DAB staining.



Immunohistochemistry (Formalin/PFA-fixed paraffin-embedded sections) - Anti-CD300C antibody (ab232789)

Formalin-fixed, paraffin-embedded human liver tissue stained for CD300C with ab232789 at 10  $\mu\text{g/ml}$  in immunohistochemical analysis. DAB staining.



Anti-CD300C antibody (ab232789) at 2 µg/ml + Recombinant human CD300C protein

**Please note:** All products are "FOR RESEARCH USE ONLY. NOT FOR USE IN DIAGNOSTIC PROCEDURES"

#### Our Abpromise to you: Quality guaranteed and expert technical support

---

- Replacement or refund for products not performing as stated on the datasheet
- Valid for 12 months from date of delivery
- Response to your inquiry within 24 hours
- We provide support in Chinese, English, French, German, Japanese and Spanish
- Extensive multi-media technical resources to help you
- We investigate all quality concerns to ensure our products perform to the highest standards

If the product does not perform as described on this datasheet, we will offer a refund or replacement. For full details of the Abpromise, please visit <https://www.abcam.com/abpromise> or contact our technical team.

#### Terms and conditions

---

- Guarantee only valid for products bought direct from Abcam or one of our authorized distributors