

Product datasheet

Anti-CD300e antibody [UP-H2] ab188410

2 Images

Overview

Product name	Anti-CD300e antibody [UP-H2]
Description	Mouse monoclonal [UP-H2] to CD300e
Host species	Mouse
Tested applications	Suitable for: Flow Cyt
Species reactivity	Reacts with: Human
Immunogen	Tissue, cells or virus corresponding to Human CD300e. CD300e-HA-transfected cells.
General notes	<p>The Life Science industry has been in the grips of a reproducibility crisis for a number of years. Abcam is leading the way in addressing this with our range of recombinant monoclonal antibodies and knockout edited cell lines for gold-standard validation. Please check that this product meets your needs before purchasing.</p> <p>If you have any questions, special requirements or concerns, please send us an inquiry and/or contact our Support team ahead of purchase. Recommended alternatives for this product can be found below, along with publications, customer reviews and Q&As</p>

Properties

Form	Liquid
Storage instructions	Shipped at 4°C. Store at +4°C short term (1-2 weeks). Upon delivery aliquot. Store at -20°C long term. Avoid freeze / thaw cycle.
Storage buffer	pH: 7.40 Preservative: 0.0975% Sodium azide Constituent: 99% PBS
Purity	Protein A purified
Purification notes	ab188410 is purified from hybridoma culture supernatant by protein-A affinity chromatography. > 95% (by SDS-PAGE).
Clonality	Monoclonal
Clone number	UP-H2
Isotype	IgG1

Applications

The Abpromise guarantee

Our [Abpromise guarantee](#) covers the use of ab188410 in the following tested applications.

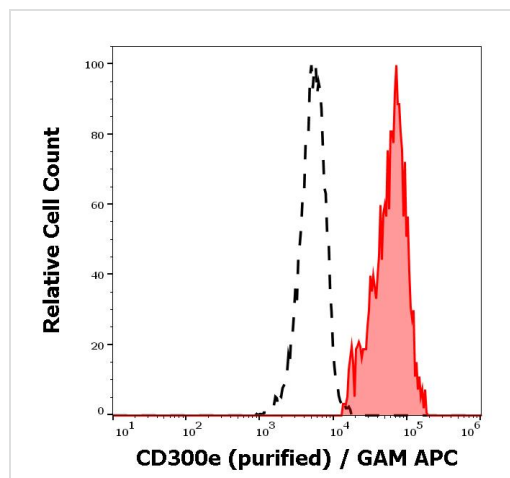
The application notes include recommended starting dilutions; optimal dilutions/concentrations should be determined by the end user.

Application	Abreviews	Notes
Flow Cyt		Use a concentration of 1 - 4 µg/ml.

Target

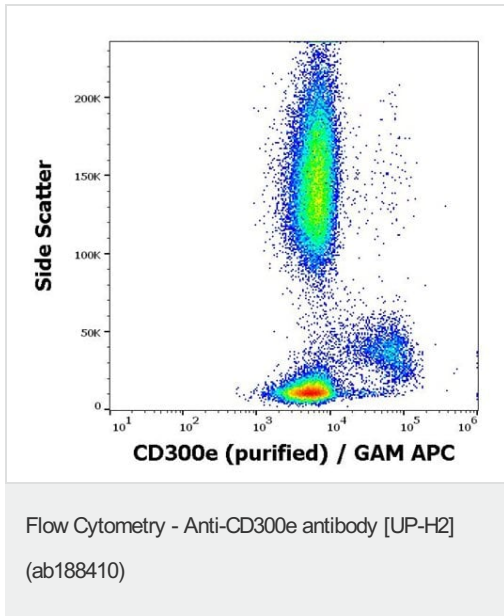
Function	Probably acts as an activating receptor.
Tissue specificity	Present on the surface of mature hematopoietic cells of the monocyte and myeloid lineages (at protein level).
Sequence similarities	Belongs to the CD300 family. Contains 1 Ig-like V-type (immunoglobulin-like) domain.
Post-translational modifications	N-glycosylated.
Cellular localization	Cell membrane.

Images



Flow Cytometry - Anti-CD300e antibody [UP-H2]
(ab188410)

Flow cytometry surface staining analysis of human peripheral whole blood using ab188410 purified antibody with a concentration of 4µg/ml, GAM APC. There is a separation of CD300e negative lymphocytes in black, and monocytes in red.



Flow cytometric pattern using surface staining of human peripheral whole blood. A concentration of 4µg/ml ab188410 purified antibody was used in the sample, GAM APC

Please note: All products are "FOR RESEARCH USE ONLY. NOT FOR USE IN DIAGNOSTIC PROCEDURES"

Our Abpromise to you: Quality guaranteed and expert technical support

- Replacement or refund for products not performing as stated on the datasheet
- Valid for 12 months from date of delivery
- Response to your inquiry within 24 hours
- We provide support in Chinese, English, French, German, Japanese and Spanish
- Extensive multi-media technical resources to help you
- We investigate all quality concerns to ensure our products perform to the highest standards

If the product does not perform as described on this datasheet, we will offer a refund or replacement. For full details of the Abpromise, please visit <https://www.abcam.com/abpromise> or contact our technical team.

Terms and conditions

- Guarantee only valid for products bought direct from Abcam or one of our authorized distributors