

## Product datasheet

# CD38 Activity Assay Kit (Fluorometric) ab284540

[3 Images](#)

### Overview

<b>Product name</b>	CD38 Activity Assay Kit (Fluorometric)
<b>Detection method</b>	Fluorescent
<b>Sample type</b>	Tissue, Adherent cells, Suspension cells
<b>Assay type</b>	Enzyme activity
<b>Assay duration</b>	Multiple steps standard assay
<b>Product overview</b>	<p>This CD38 Activity Assay Kit (Fluorometric) ab284540 (previously known as K2042) can be used to detect its activity in biological samples. The kit utilizes the activity of CD38 to catalyze the conversion of a CD38 substrate to a fluorescent product (Ex/Em = 300/410 nm).</p> <p>This assay kit provides a rapid, simple and sensitive method to detect CD38 activity in a variety of sample types.</p> <p>General range: 0 - 200 pmol/well</p>
<b>Notes</b>	<p>This product is manufactured by BioVision, an Abcam company and was previously called K2042 CD38 Activity Assay Kit (Fluorometric). K2042-100 is the same size as the 100 test size of ab284540.</p>
<b>Platform</b>	Microplate (12 x 8 well strips)

### Properties

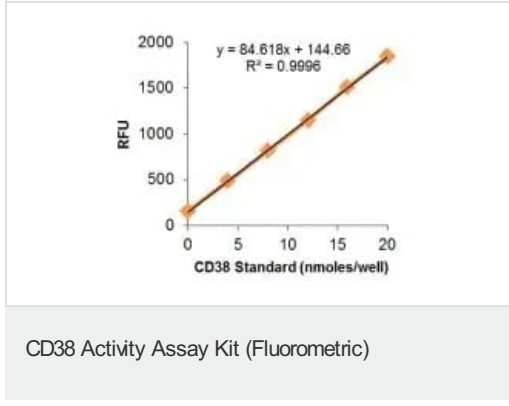
**Storage instructions** Store at -20°C. Please refer to protocols.

Components	Identifier	100 tests
CD38 Assay Buffer	WM cap	1 x 25ml
CD38 Lysis Buffer	NM cap	1 x 25ml
CD38 Positive Control	Orange cap	1 vial
CD38 Standard	Yellow cap	1 x 20µl

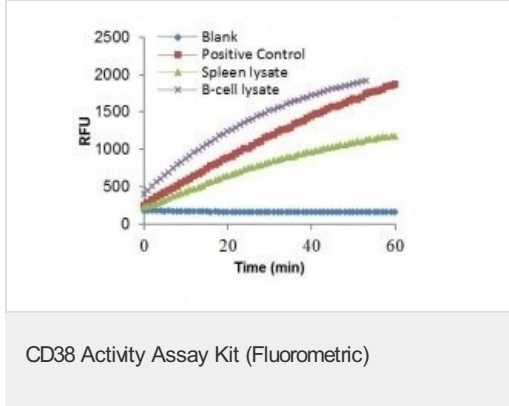
Components	Identifier	100 tests
CD38 Substrate	White cap	1 vial

<b>Function</b>	Synthesizes cyclic ADP-ribose, a second messenger for glucose-induced insulin secretion. Also has cADPr hydrolase activity. Also moonlights as a receptor in cells of the immune system.
<b>Tissue specificity</b>	Expressed at high levels in pancreas, liver, kidney, brain, testis, ovary, placenta, malignant lymphoma and neuroblastoma.
<b>Sequence similarities</b>	Belongs to the ADP-ribosyl cyclase family.
<b>Developmental stage</b>	Preferentially expressed at both early and late stages of the B and T-cell maturation. It is also detected on erythroid and myeloid progenitors in bone marrow, where the level of surface expression was shown to decrease during differentiation of blast-forming unit E to colony-forming unit E.
<b>Cellular localization</b>	Membrane.

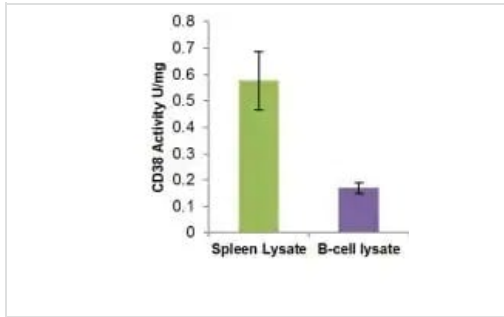
**Images**



CD38 Standard Curve. Assays were performed following the kit protocol.



Reaction Kinetic curve of CD38 Positive Control, spleen lysate and B-cell lysate. Assays were performed following the kit protocol.



CD38 activity assayed in rat spleen lysate (2  $\mu$ g) and B-cell lysate (2.7  $\mu$ g). Assays were performed following the kit protocol.

CD38 Activity Assay Kit (Fluorometric)

**Please note:** All products are "FOR RESEARCH USE ONLY. NOT FOR USE IN DIAGNOSTIC PROCEDURES"

### Our Abpromise to you: Quality guaranteed and expert technical support

---

- Replacement or refund for products not performing as stated on the datasheet
- Valid for 12 months from date of delivery
- Response to your inquiry within 24 hours
- We provide support in Chinese, English, French, German, Japanese and Spanish
- Extensive multi-media technical resources to help you
- We investigate all quality concerns to ensure our products perform to the highest standards

If the product does not perform as described on this datasheet, we will offer a refund or replacement. For full details of the Abpromise, please visit <https://www.abcam.com/abpromise> or contact our technical team.

### Terms and conditions

---

- Guarantee only valid for products bought direct from Abcam or one of our authorized distributors