


Product datasheet

Anti-CD38 antibody ab223214

1 Image

Overview

Product name	Anti-CD38 antibody
Description	Goat polyclonal to CD38
Host species	Goat
Tested applications	Suitable for: WB
Species reactivity	Reacts with: Human Predicted to work with: Cynomolgus monkey 
Immunogen	Synthetic peptide corresponding to Human CD38 aa 226-237 (Cysteine residue). Sequence: C-EVHNLQPEKVQT Database link: P28907 Run BLAST with Run BLAST with
Positive control	WB: Human spinal cord cancer lysate.

Properties

Form	Liquid
Storage instructions	Shipped at 4°C. Store at +4°C short term (1-2 weeks). Upon delivery aliquot. Store at -20°C long term. Avoid freeze / thaw cycle.
Storage buffer	pH: 7.3 Preservative: 0.02% Sodium azide Constituents: 0.5% BSA, Tris buffered saline
Purity	Immunogen affinity purified
Purification notes	Purified from goat serum by ammonium sulphate precipitation followed by antigen affinity chromatography using the immunizing peptide.
Clonality	Polyclonal
Isotype	IgG

Applications

Our [Abpromise guarantee](#) covers the use of **ab223214** in the following tested applications.

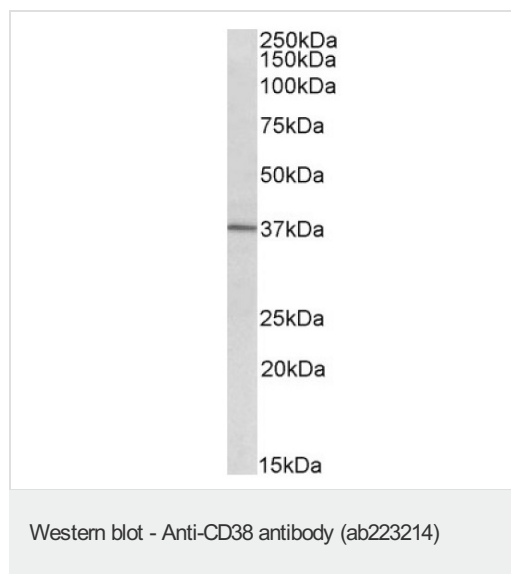
The application notes include recommended starting dilutions; optimal dilutions/concentrations should be determined by the end user.

Application	Abreviews	Notes
WB		Use a concentration of 1 - 3 µg/ml.

Target

Function	Synthesizes cyclic ADP-ribose, a second messenger for glucose-induced insulin secretion. Also has cADPr hydrolase activity. Also moonlights as a receptor in cells of the immune system.
Tissue specificity	Expressed at high levels in pancreas, liver, kidney, brain, testis, ovary, placenta, malignant lymphoma and neuroblastoma.
Sequence similarities	Belongs to the ADP-ribosyl cyclase family.
Developmental stage	Preferentially expressed at both early and late stages of the B and T-cell maturation. It is also detected on erythroid and myeloid progenitors in bone marrow, where the level of surface expression was shown to decrease during differentiation of blast-forming unit E to colony-forming unit E.
Cellular localization	Membrane.
Form	There are 2 isoforms produced by alternative splicing.

Images



Anti-CD38 antibody (ab223214) at 2 µg/ml + human spinal cord cancer lysate in RIPA buffer at 35 µg

Primary incubation: 1 hour

Please note: All products are "FOR RESEARCH USE ONLY. NOT FOR USE IN DIAGNOSTIC PROCEDURES"

Our Abpromise to you: Quality guaranteed and expert technical support

- Replacement or refund for products not performing as stated on the datasheet
- Valid for 12 months from date of delivery

- Response to your inquiry within 24 hours
- We provide support in Chinese, English, French, German, Japanese and Spanish
- Extensive multi-media technical resources to help you
- We investigate all quality concerns to ensure our products perform to the highest standards

If the product does not perform as described on this datasheet, we will offer a refund or replacement. For full details of the Abpromise, please visit <https://www.abcam.com/abpromise> or contact our technical team.

Terms and conditions

- Guarantee only valid for products bought direct from Abcam or one of our authorized distributors