

## Product datasheet

# Anti-CD4 antibody [W3/25] ab6413

5 References 1 Image

### Overview

---

<b>Product name</b>	Anti-CD4 antibody [W3/25]
<b>Description</b>	Mouse monoclonal [W3/25] to CD4
<b>Host species</b>	Mouse
<b>Tested applications</b>	<b>Suitable for:</b> Flow Cyt <b>Unsuitable for:</b> IHC-P
<b>Species reactivity</b>	<b>Reacts with:</b> Rat
<b>Immunogen</b>	Tissue, cells or virus corresponding to Rat CD4. Rat thymocyte membrane.
<b>Positive control</b>	Flow cyt: Lewis rat splenocytes.
<b>General notes</b>	<p>This antibody clone is manufactured by Abcam. If you require a custom buffer formulation or conjugation for your experiments, please contact <a href="mailto:orders@abcam.com">orders@abcam.com</a>.</p> <p>The Life Science industry has been in the grips of a reproducibility crisis for a number of years. Abcam is leading the way in addressing this with our range of recombinant monoclonal antibodies and knockout edited cell lines for gold-standard validation. Please check that this product meets your needs before purchasing.</p> <p>If you have any questions, special requirements or concerns, please send us an inquiry and/or contact our Support team ahead of purchase. Recommended alternatives for this product can be found below, along with publications, customer reviews and Q&amp;As</p>

### Properties

---

<b>Form</b>	Liquid
<b>Storage instructions</b>	Shipped at 4°C. Store at +4°C short term (1-2 weeks). Upon delivery aliquot. Store at -20°C long term. Avoid freeze / thaw cycle.
<b>Storage buffer</b>	Preservative: 0.02% Sodium azide Constituent: PBS
<b>Purity</b>	Protein G purified
<b>Clonality</b>	Monoclonal
<b>Clone number</b>	W3/25
<b>Isotype</b>	IgG1
<b>Light chain type</b>	kappa

## Applications

**The Abpromise guarantee** Our [Abpromise guarantee](#) covers the use of ab6413 in the following tested applications.

The application notes include recommended starting dilutions; optimal dilutions/concentrations should be determined by the end user.

Application	Abreviews	Notes
Flow Cyt		Use a concentration of 0.2 µg/ml.

**Application notes** Is unsuitable for IHC-P.

## Target

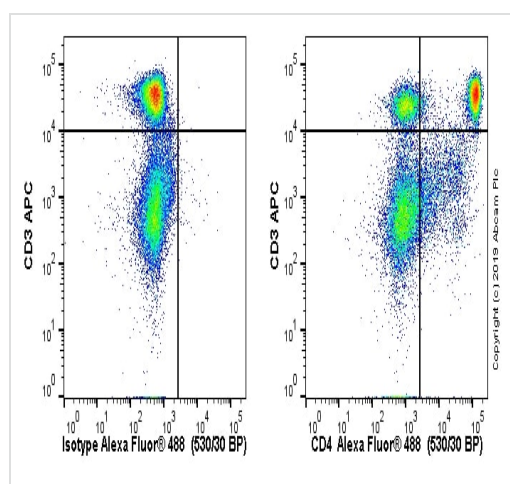
**Function** Accessory protein for MHC class-II antigen/T-cell receptor interaction. May regulate T-cell activation. Induces the aggregation of lipid rafts.

**Sequence similarities** Contains 3 Ig-like C2-type (immunoglobulin-like) domains.  
Contains 1 Ig-like V-type (immunoglobulin-like) domain.

**Post-translational modifications** Palmitoylation and association with LCK contribute to the enrichment of CD4 in lipid rafts.

**Cellular localization** Cell membrane. Localizes to lipid rafts. Removed from plasma membrane by HIV-1 Nef protein that increases clathrin-dependent endocytosis of this antigen to target it to lysosomal degradation. Cell surface expression is also down-modulated by HIV-1 Envelope polyprotein gp160 that interacts with, and sequesters CD4 in the endoplasmic reticulum.

## Images



Lewis rat splenocytes stained with ab6413 (right) or mouse IgG1k ([ab170190](#)) isotype (left). Lewis rat splenocytes were incubated for 30 min on ice in 1x PBS / 10 % rat serum to block FC receptors and non-specific protein-protein interaction followed by the antibody (ab6413) or mouse IgG1k ([ab170190](#)) ( $1 \times 10^6$  in 100 µl at 0.2 µg/ml) for 30 min on ice.

The secondary antibody Goat anti-mouse IgG H&L (Alexa Fluor® 488, pre-adsorbed) ([ab150117](#)) was used at 1/2000 dilution for 30 min on ice. The cells were simultaneously stained with CD3 antibody.

Acquisition of >30,000 events were collected using a 50 mW Blue laser (488nm) and 530/30 bandpass filter. Events were gated on viable lymphocytes.

**Please note:** All products are "FOR RESEARCH USE ONLY. NOT FOR USE IN DIAGNOSTIC PROCEDURES"

## **Our Abpromise to you: Quality guaranteed and expert technical support**

---

- Replacement or refund for products not performing as stated on the datasheet
- Valid for 12 months from date of delivery
- Response to your inquiry within 24 hours
  
- We provide support in Chinese, English, French, German, Japanese and Spanish
- Extensive multi-media technical resources to help you
- We investigate all quality concerns to ensure our products perform to the highest standards

If the product does not perform as described on this datasheet, we will offer a refund or replacement. For full details of the Abpromise, please visit <https://www.abcam.com/abpromise> or contact our technical team.

## **Terms and conditions**

---

- Guarantee only valid for products bought direct from Abcam or one of our authorized distributors