

Product datasheet

Anti-CD40 antibody [5C3] (Allophycocyanin) ab134382

1 Image

Overview

Product name	Anti-CD40 antibody [5C3] (Allophycocyanin)
Description	Mouse monoclonal [5C3] to CD40 (Allophycocyanin)
Host species	Mouse
Conjugation	Allophycocyanin. Ex: 645nm, Em: 660nm
Tested applications	Suitable for: Flow Cyt
Species reactivity	Reacts with: Human
Immunogen	Recombinant extracellular domain of CD40
Positive control	Human peripheral blood cells
General notes	The clone 5C3 is reported to be used for activation of B cells in <i>in vitro</i> functional assays.

Properties

Form	Liquid
Storage instructions	Shipped at 4°C. Store at +4°C.
Storage buffer	pH: 7.20 Preservative: 0.09% Sodium azide Constituents: PBS, 0.2% BSA
Purity	Protein G purified
Primary antibody notes	The clone 5C3 is reported to be used for activation of B cells in <i>in vitro</i> functional assays.
Clonality	Monoclonal
Clone number	5C3
Isotype	IgG1
Light chain type	kappa

Applications

Our [Abpromise guarantee](#) covers the use of **ab134382** in the following tested applications.

The application notes include recommended starting dilutions; optimal dilutions/concentrations should be determined by the end user.

Application	Abreviews	Notes
-------------	-----------	-------

Flow Cyt

Use 5µl for 10⁶ cells.

[ab37391](#) - Mouse monoclonal IgG1, is suitable for use as an isotype control with this antibody.

Target

Function

Receptor for TNFSF5/CD40LG.

Tissue specificity

B-cells and in primary carcinomas.

Involvement in disease

Defects in CD40 are the cause of hyper-IgM immunodeficiency syndrome type 3 (HIGM3) [MIM:606843]; also known as hyper-IgM syndrome 3. HIGM3 is an autosomal recessive disorder which includes an inability of B cells to undergo isotype switching, one of the final differentiation steps in the humoral immune system, an inability to mount an antibody-specific immune response, and a lack of germinal center formation.

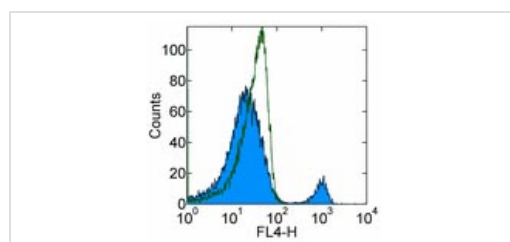
Sequence similarities

Contains 4 TNFR-Cys repeats.

Cellular localization

Secreted and Cell membrane.

Images



Flow cytometry analysis of normal Human peripheral blood cells with Mouse IgG1 K Isotype Control APC (open histogram) or [ab134382](#) at 5 µl (0.06 µg)/test (filled histogram). Cells in the lymphocyte gate were used for analysis.

Flow Cytometry - Anti-CD40 antibody [5C3]
(Allophycocyanin) ([ab134382](#))

Please note: All products are "FOR RESEARCH USE ONLY. NOT FOR USE IN DIAGNOSTIC PROCEDURES"

Our Abpromise to you: Quality guaranteed and expert technical support

- Replacement or refund for products not performing as stated on the datasheet
- Valid for 12 months from date of delivery
- Response to your inquiry within 24 hours
- We provide support in Chinese, English, French, German, Japanese and Spanish
- Extensive multi-media technical resources to help you
- We investigate all quality concerns to ensure our products perform to the highest standards

If the product does not perform as described on this datasheet, we will offer a refund or replacement. For full details of the Abpromise, please visit <https://www.abcam.com/abpromise> or contact our technical team.

Terms and conditions

- Guarantee only valid for products bought direct from Abcam or one of our authorized distributors