

Product datasheet

FITC Anti-CD40 antibody [G28.5] ab246414

1 Image

Overview

Product name	FITC Anti-CD40 antibody [G28.5]
Description	FITC Mouse monoclonal [G28.5] to CD40
Host species	Mouse
Conjugation	FITC. Ex: 493nm, Em: 528nm
Tested applications	Suitable for: Flow Cyt
Species reactivity	Reacts with: Human
Immunogen	The details of the immunogen for this antibody are not available.
Positive control	Flow cyt: Human peripheral blood lymphocytes.
General notes	<p>Reproducibility is key to advancing scientific discovery and accelerating scientists' next breakthrough.</p> <p>Abcam is leading the way with our range of recombinant antibodies, knockout-validated antibodies and knockout cell lines, all of which support improved reproducibility.</p> <p>We are also planning to innovate the way in which we present recommended applications and species on our product datasheets, so that only applications & species that have been tested in our own labs, our suppliers or by selected trusted collaborators are covered by our Abpromise™ guarantee.</p> <p>In preparation for this, we have started to update the applications & species that this product is Abpromise guaranteed for.</p> <p>We are also updating the applications & species that this product has been “predicted to work with,” however this information is not covered by our Abpromise guarantee.</p> <p>Applications & species from publications and Abreviews that have not been tested in our own labs or in those of our suppliers are not covered by the Abpromise guarantee.</p> <p>Please check that this product meets your needs before purchasing. If you have any questions, special requirements or concerns, please send us an inquiry and/or contact our Support team ahead of purchase. Recommended alternatives for this product can be found below, as well as customer reviews and Q&As.</p>

Properties

Form	Liquid
-------------	--------

Storage instructions	Shipped at 4°C. Store at +4°C. Store In the Dark.
Storage buffer	pH: 7.20 Preservative: 0.09% Sodium azide Constituents: 0.16% Sodium phosphate, 0.87% Sodium chloride, 0.1% Gelatin
Purity	Affinity purified
Purification notes	Purified from tissue culture supernatant. The purified antibody was conjugated under optimal conditions, with unreacted dye removed from the preparation.
Clonality	Monoclonal
Clone number	G28.5
Isotype	IgG1
Light chain type	kappa

Applications

Our [Abpromise guarantee](#) covers the use of **ab246414** in the following tested applications.

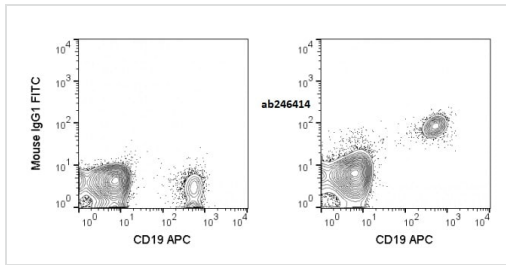
The application notes include recommended starting dilutions; optimal dilutions/concentrations should be determined by the end user.

Application	Abreviews	Notes
Flow Cyt		Use at an assay dependent concentration. Use at 5 µl (0.5 µg) per test. The antibody has been diluted for use at 5 uL per test, defined as the amount of antibody that will stain a cell sample in a final volume of approximately 100 uL. The number of cells within a sample should be determined empirically, but typically ranges between 1x10 ⁵ to 1x10 ⁸ cells.

Target

Function	Receptor for TNFSF5/CD40LG.
Tissue specificity	B-cells and in primary carcinomas.
Involvement in disease	Defects in CD40 are the cause of hyper-IgM immunodeficiency syndrome type 3 (HIGM3) [MIM:606843]; also known as hyper-IgM syndrome 3. HIGM3 is an autosomal recessive disorder which includes an inability of B cells to undergo isotype switching, one of the final differentiation steps in the humoral immune system, an inability to mount an antibody-specific immune response, and a lack of germinal center formation.
Sequence similarities	Contains 4 TNFR-Cys repeats.
Cellular localization	Secreted and Cell membrane.

Images



Human peripheral blood lymphocytes were stained with APC Anti-Human CD19 and 5 μ L (0.5 μ g) ab246414 (right panel) or 0.5 μ g FITC Mouse IgG1 isotype control (left panel).

Flow Cytometry - FITC Anti-CD40 antibody [G28.5] (ab246414)

Please note: All products are "FOR RESEARCH USE ONLY. NOT FOR USE IN DIAGNOSTIC PROCEDURES"

Our Abpromise to you: Quality guaranteed and expert technical support

- Replacement or refund for products not performing as stated on the datasheet
- Valid for 12 months from date of delivery
- Response to your inquiry within 24 hours
- We provide support in Chinese, English, French, German, Japanese and Spanish
- Extensive multi-media technical resources to help you
- We investigate all quality concerns to ensure our products perform to the highest standards

If the product does not perform as described on this datasheet, we will offer a refund or replacement. For full details of the Abpromise, please visit <https://www.abcam.com/abpromise> or contact our technical team.

Terms and conditions

- Guarantee only valid for products bought direct from Abcam or one of our authorized distributors