

Product datasheet

Anti-CD45.1 antibody [A20] (Allophycocyanin) ab25348

2 References 1 Image

Overview

<b>Product name</b>	Anti-CD45.1 antibody [A20] (Allophycocyanin)
<b>Description</b>	Mouse monoclonal [A20] to CD45.1 (Allophycocyanin)
<b>Host species</b>	Mouse
<b>Conjugation</b>	Allophycocyanin. Ex: 645nm, Em: 660nm
<b>Tested applications</b>	<b>Suitable for:</b> ICC/IF, Flow Cyt, IP
<b>Species reactivity</b>	<b>Reacts with:</b> Mouse
<b>Immunogen</b>	The details of the immunogen for this antibody are not available.

Properties

<b>Form</b>	Liquid
<b>Storage instructions</b>	Shipped at 4°C. Store at +4°C. Do Not Freeze. Store undiluted.
<b>Storage buffer</b>	pH: 7.2 Preservative: 0.09% Sodium azide Constituents: 0.1% Gelatin, 0.14% Monobasic dihydrogen sodium phosphate, 0.87% Sodium chloride
<b>Purity</b>	Affinity purified
<b>Clonality</b>	Monoclonal
<b>Clone number</b>	A20
<b>Isotype</b>	IgG2a
<b>Light chain type</b>	kappa

Applications

Our [Abpromise guarantee](#) covers the use of **ab25348** in the following tested applications.

The application notes include recommended starting dilutions; optimal dilutions/concentrations should be determined by the end user.

Application	Abreviews	Notes
ICC/IF		Use at an assay dependent concentration.

Application	Abreviews	Notes
Flow Cyt		Use at an assay dependent concentration.
IP		Use at an assay dependent concentration.

## Target

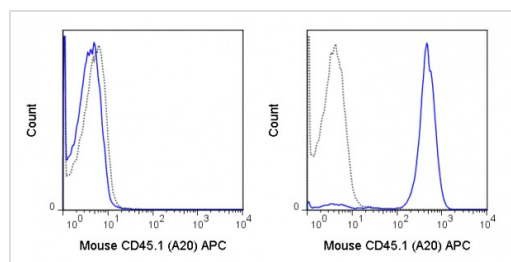
### Relevance

CD45 is an essential regulator of leukocyte activation and development, and is now known to be a protein tyrosine phosphatase, e.g. CD45 is able to dephosphorylate the Src family of protein kinases. This activity is now known to be required for signal transduction induced by T and B cell antigen receptor engagement, cytokine signaling and Fc receptor stimulation. The functional state of CD45 also has a pronounced effect on lymphocyte development. CD45 exists in multiple forms, such as the restricted variants and as allelic forms CD45.1/Ly5.1 and CD45.2/Ly5.2. The former arises as a result of alternative splicing of different exons. The specificity of antibodies to CD45.1 and CD45.2 has been exploited in studies in which resolution of donor and recipient cells is essential, such as in gene therapy or bone marrow transplantation.

### Cellular localization

Type I membrane protein.

## Images



Flow Cytometry analysis of C57Bl/6 (left panel) or SJL (right panel) splenocytes labeling CD45.1 with ab25348 at 0.5  $\mu$ g (solid line) or Mouse IgG2a (Allophycocyanin) isotype control at 0.5  $\mu$ g (dashed line).

Flow Cytometry - Anti-CD45.1 antibody [A20]  
(Allophycocyanin) (ab25348)

**Please note:** All products are "FOR RESEARCH USE ONLY. NOT FOR USE IN DIAGNOSTIC PROCEDURES"

## Our Abpromise to you: Quality guaranteed and expert technical support

- Replacement or refund for products not performing as stated on the datasheet
- Valid for 12 months from date of delivery
- Response to your inquiry within 24 hours
- We provide support in Chinese, English, French, German, Japanese and Spanish
- Extensive multi-media technical resources to help you
- We investigate all quality concerns to ensure our products perform to the highest standards

If the product does not perform as described on this datasheet, we will offer a refund or replacement. For full details of the Abpromise,

please visit <https://www.abcam.com/abpromise> or contact our technical team.

## **Terms and conditions**

---

- Guarantee only valid for products bought direct from Abcam or one of our authorized distributors