



Product datasheet

Anti-CD55 antibody ab231061

4 Images

Overview

Product name	Anti-CD55 antibody
Description	Rabbit polyclonal to CD55
Host species	Rabbit
Tested applications	Suitable for: IHC-P, WB
Species reactivity	Reacts with: Mouse, Rat, Human
Immunogen	<p>Recombinant fragment (His-tag) corresponding to Rat CD55 aa 254-372. Expressed in E. coli. Sequence:</p> <p>PHESTLINFPSTRAPLSHKPTTVKVPGTRVKPTSHKPT EVKVPATQHVPV SKTTVRHPTRTSKDRGESNSGGDHFYGFVAVMTIDSII LIKTLWWTIL SSNRSSDLQGKKKRENVPE</p> <p>Database link: Q9QYJ9</p> <p style="text-align: right;"> Run BLAST with  Run BLAST with</p>
Positive control	WB: Recombinant rat CD55 protein. Rat testis and placenta lysate. Mouse testis lysate. A549 cell lysate. IHC-P: Rat pancreas and intestine tissue.

Properties

Form	Liquid
Storage instructions	Shipped at 4°C. Store at +4°C short term (1-2 weeks). Upon delivery aliquot. Store at -20°C long term. Avoid freeze / thaw cycle.
Storage buffer	<p>pH: 7.4 Preservative: 0.05% Proclin Constituents: PBS, 50% Glycerol</p>
Purity	Protein A purified
Purification notes	Antigen-specific affinity chromatography followed by Protein A affinity chromatography
Clonality	Polyclonal
Isotype	IgG

Applications

Applications

Our [Abpromise guarantee](#) covers the use of **ab231061** in the following tested applications.

The application notes include recommended starting dilutions; optimal dilutions/concentrations should be determined by the end user.

Application	Abreviews	Notes
IHC-P		Use a concentration of 5 - 20 µg/ml.
WB		Use a concentration of 0.5 - 2 µg/ml.

Target

Function

This protein recognizes C4b and C3b fragments that condense with cell-surface hydroxyl or amino groups when nascent C4b and C3b are locally generated during C4 and c3 activation. Interaction of daf with cell-associated C4b and C3b polypeptides interferes with their ability to catalyze the conversion of C2 and factor B to enzymatically active C2a and Bb and thereby prevents the formation of C4b2a and C3bBb, the amplification convertases of the complement cascade.

Tissue specificity

Expressed on the plasma membranes of all cell types that are in intimate contact with plasma complement proteins. It is also found on the surfaces of epithelial cells lining extracellular compartments, and variants of the molecule are present in body fluids and in extracellular matrix.

Sequence similarities

Belongs to the receptors of complement activation (RCA) family.
Contains 4 Sushi (CCP/SCR) domains.

Domain

The first Sushi domain (SCR1) is not necessary for function. SCR2 and SCR4 provide the proper conformation for the active site on SCR3.

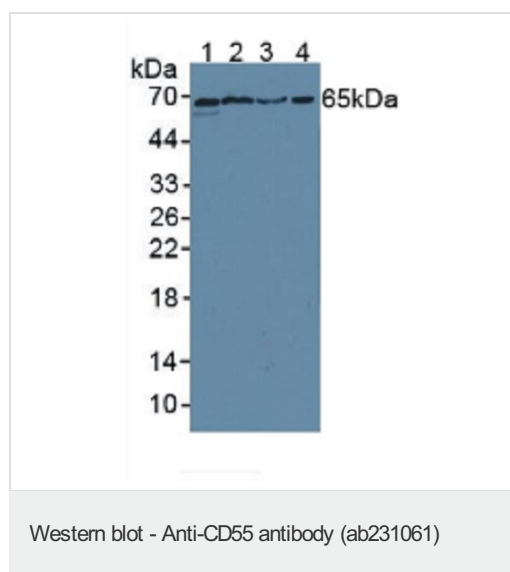
Post-translational modifications

The Ser/Thr-rich domain is heavily O-glycosylated.

Cellular localization

Cell membrane.

Images



All lanes : Anti-CD55 antibody (ab231061) at 2 µg/ml

Lane 1 : Rat testis tissue lysate

Lane 2 : Rat placenta tissue lysate

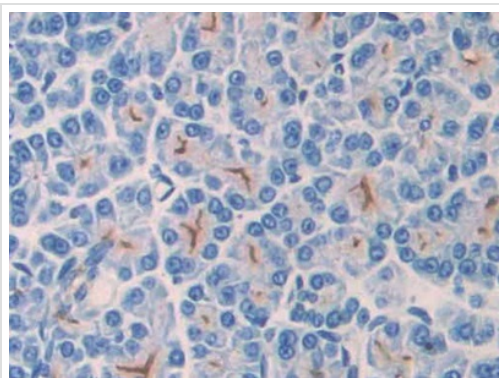
Lane 3 : Mouse testis tissue lysate

Lane 4 : A549 (Human lung carcinoma cell line) cell lysate

Secondary

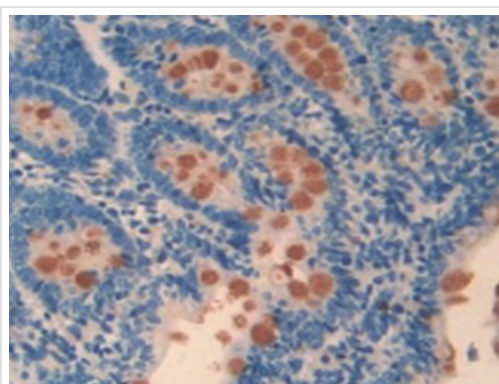
All lanes : HRP-linked Guinea pig Anti-Rabbit at 1/2000 dilution

Developed using the ECL technique.



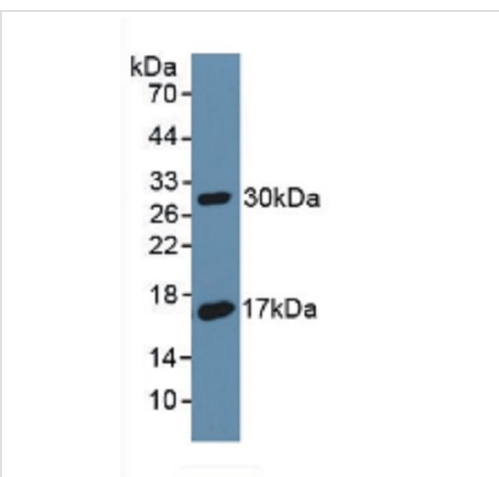
Immunohistochemistry (Formalin/PFA-fixed paraffin-embedded sections) - Anti-CD55 antibody (ab231061)

Formalin-fixed, paraffin-embedded rat pancreas tissue stained for CD55 with ab231061 at 20 $\mu\text{g/ml}$ in immunohistochemical analysis. DAB staining.



Immunohistochemistry (Formalin/PFA-fixed paraffin-embedded sections) - Anti-CD55 antibody (ab231061)

Formalin-fixed, paraffin-embedded rat intestine tissue stained for CD55 with ab231061 at 20 $\mu\text{g/ml}$ in immunohistochemical analysis. DAB staining.



Western blot - Anti-CD55 antibody (ab231061)

Anti-CD55 antibody (ab231061) at 2 $\mu\text{g/ml}$ + recombinant rat CD55 protein

Developed using the ECL technique.

Our Abpromise to you: Quality guaranteed and expert technical support

- Replacement or refund for products not performing as stated on the datasheet
- Valid for 12 months from date of delivery
- Response to your inquiry within 24 hours

- We provide support in Chinese, English, French, German, Japanese and Spanish
- Extensive multi-media technical resources to help you
- We investigate all quality concerns to ensure our products perform to the highest standards

If the product does not perform as described on this datasheet, we will offer a refund or replacement. For full details of the Abpromise, please visit <https://www.abcam.com/abpromise> or contact our technical team.

Terms and conditions

- Guarantee only valid for products bought direct from Abcam or one of our authorized distributors