

Product datasheet

Anti-CD5L/CT-2 antibody ab45406

[2 Images](#)

Overview

Product name	Anti-CD5L/CT-2 antibody
Description	Rabbit polyclonal to CD5L/CT-2
Host species	Rabbit
Specificity	This antibody is specific for CD5L / CT-2.
Tested applications	Suitable for: IHC-P, WB
Species reactivity	Reacts with: Mouse, Human
Immunogen	Synthetic peptide corresponding to Human CD5L/CT-2 (N terminal).
Positive control	Raji cell lysate.
General notes	Previously labelled as CD5L.

Reproducibility is key to advancing scientific discovery and accelerating scientists' next breakthrough.

Abcam is leading the way with our range of recombinant antibodies, knockout-validated antibodies and knockout cell lines, all of which support improved reproducibility.

We are also planning to innovate the way in which we present recommended applications and species on our product datasheets, so that only applications & species that have been tested in our own labs, our suppliers or by selected trusted collaborators are covered by our Abpromise™ guarantee.

In preparation for this, we have started to update the applications & species that this product is Abpromise guaranteed for.

We are also updating the applications & species that this product has been “predicted to work with,” however this information is not covered by our Abpromise guarantee.

Applications & species from publications and Abreviews that have not been tested in our own labs or in those of our suppliers are not covered by the Abpromise guarantee.

Please check that this product meets your needs before purchasing. If you have any questions, special requirements or concerns, please send us an inquiry and/or contact our Support team ahead of purchase. Recommended alternatives for this product can be found below, as well as customer reviews and Q&As.

Properties

Form	Liquid
Storage instructions	Shipped at 4°C. Store at +4°C.
Storage buffer	pH: 7.2 Preservative: 0.02% Sodium azide Constituent: PBS
Purity	Immunogen affinity purified
Clonality	Polyclonal
Isotype	IgG

Applications

Our [Abpromise guarantee](#) covers the use of **ab45406** in the following tested applications.

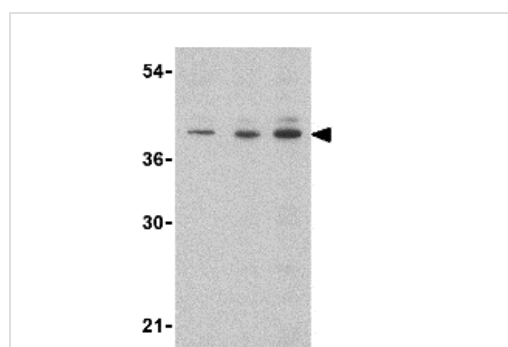
The application notes include recommended starting dilutions; optimal dilutions/concentrations should be determined by the end user.

Application	Abreviews	Notes
IHC-P		Use a concentration of 10 µg/ml.
WB		Use a concentration of 0.5 - 1 µg/ml. Detects a band of approximately 40 kDa (predicted molecular weight: 38 kDa).

Target

Function	May play a role in the regulation of the immune system. Seems to play a role as an inhibitor of apoptosis.
Tissue specificity	Expressed in spleen, lymph node, thymus, bone marrow, and fetal liver, but not in non-lymphoid tissues.
Sequence similarities	Contains 3 SRCR domains.
Cellular localization	Secreted.

Images



Western blot - Anti-CD5L/CT-2 antibody (ab45406)

Lane 1 : Anti-CD5L/CT-2 antibody (ab45406) at 0.5 µg/ml

Lane 2 : Anti-CD5L/CT-2 antibody (ab45406) at 1 µg/ml

Lane 3 : Anti-CD5L/CT-2 antibody (ab45406) at 2 µg/ml

All lanes : Raji cell lysate

Lysates/proteins at 15 µg per lane.

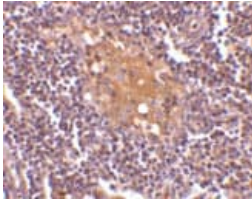
Secondary

All lanes : anti-rabbit HRP

Predicted band size: 38 kDa

Observed band size: 40 kDa

[why is the actual band size different from the predicted?](#)



ab45406 at 10µg/ml staining CD5L/CT-2 in human lymph nodes by IHC

Immunohistochemistry (Formalin/PFA-fixed paraffin-embedded sections) - Anti-CD5L/CT-2 antibody (ab45406)

Please note: All products are "FOR RESEARCH USE ONLY. NOT FOR USE IN DIAGNOSTIC PROCEDURES"

Our Abpromise to you: Quality guaranteed and expert technical support

- Replacement or refund for products not performing as stated on the datasheet
- Valid for 12 months from date of delivery
- Response to your inquiry within 24 hours
- We provide support in Chinese, English, French, German, Japanese and Spanish
- Extensive multi-media technical resources to help you
- We investigate all quality concerns to ensure our products perform to the highest standards

If the product does not perform as described on this datasheet, we will offer a refund or replacement. For full details of the Abpromise, please visit <https://www.abcam.com/abpromise> or contact our technical team.

Terms and conditions

- Guarantee only valid for products bought direct from Abcam or one of our authorized distributors