

Product datasheet

Anti-CD62L antibody [DREG56] (PerCP/Cy5.5®)
ab234219

1 Image

Overview

Product name	Anti-CD62L antibody [DREG56] (PerCP/Cy5.5®)
Description	Mouse monoclonal [DREG56] to CD62L (PerCP/Cy5.5®)
Host species	Mouse
Conjugation	PerCP/Cy5.5®. Ex: 482nm, Em: 690nm
Tested applications	Suitable for: Flow Cyt
Species reactivity	Reacts with: Human
Immunogen	Tissue, cells or virus corresponding to CD62L. PMA-activated human peripheral blood leukocytes.
Positive control	Flow Cytometry: Human peripheral blood cells.
General notes	This product or portions thereof is manufactured under license from Carnegie Mellon University under U.S. Patent Number 5, 268, 486 and related patents. Cy and CyDye are trademarks of GE Healthcare Limited.

Properties

Form	Liquid
Storage instructions	Shipped at 4°C. Store at +4°C. Store In the Dark.
Storage buffer	Preservative: 0.0975% Sodium azide Constituent: PBS
Purity	Size exclusion
Purification notes	ab234219 is conjugated with tandem dye PerCP-Cy™5.5 under optimum conditions. The conjugate is purified by size-exclusion chromatography and adjusted for direct use.
Clonality	Monoclonal
Clone number	DREG56
Isotype	IgG1

Applications

Our [Abpromise guarantee](#) covers the use of **ab234219** in the following tested applications.

The application notes include recommended starting dilutions; optimal dilutions/concentrations should be determined by the end user.

Application	Abreviews	Notes
-------------	-----------	-------

Flow Cyt		Use at an assay dependent concentration.
----------	--	--

Target

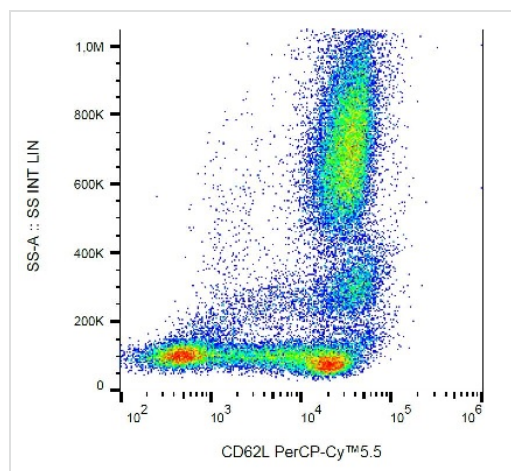
Function Cell surface adhesion protein. Mediates the adherence of lymphocytes to endothelial cells of high endothelial venules in peripheral lymph nodes. Promotes initial tethering and rolling of leukocytes in endothelia.

Tissue specificity Expressed in B cell lines and T lymphocytes.

Sequence similarities Belongs to the selectin/LECAM family.
Contains 1 C-type lectin domain.
Contains 1 EGF-like domain.
Contains 2 Sushi (CCP/SCR) domains.

Cellular localization Membrane.

Images



Flow Cytometry analysis of human peripheral blood labeling CD62L with ab234219. Surface staining. Leukocyte gate.

Flow Cytometry - Anti-CD62L antibody [DREG56]
(PerCP/Cy5.5®) (ab234219)

Please note: All products are "FOR RESEARCH USE ONLY. NOT FOR USE IN DIAGNOSTIC PROCEDURES"

Our Abpromise to you: Quality guaranteed and expert technical support

- Replacement or refund for products not performing as stated on the datasheet
- Valid for 12 months from date of delivery
- Response to your inquiry within 24 hours

- We provide support in Chinese, English, French, German, Japanese and Spanish
- Extensive multi-media technical resources to help you
- We investigate all quality concerns to ensure our products perform to the highest standards

If the product does not perform as described on this datasheet, we will offer a refund or replacement. For full details of the Abpromise, please visit <https://www.abcam.com/abpromise> or contact our technical team.

Terms and conditions

- Guarantee only valid for products bought direct from Abcam or one of our authorized distributors