


Product datasheet

Anti-CD62P antibody [Psel.KO.2.7] ab54427

6 References 2 Images

Overview

Product name	Anti-CD62P antibody [Psel.KO.2.7]
Description	Mouse monoclonal [Psel.KO.2.7] to CD62P
Host species	Mouse
Tested applications	Suitable for: IHC-Fr, Flow Cyt
Species reactivity	Reacts with: Human Predicted to work with: Sheep 
Immunogen	Tissue, cells or virus corresponding to Human CD62P.
Positive control	Flow Cyt: Human whole blood; IHC-Fr: Human tonsil tissue.
General notes	<p>This antibody clone is manufactured by Abcam. If you require a custom buffer formulation or conjugation for your experiments, please contact orders@abcam.com.</p> <p>Reproducibility is key to advancing scientific discovery and accelerating scientists' next breakthrough.</p> <p>Abcam is leading the way with our range of recombinant antibodies, knockout-validated antibodies and knockout cell lines, all of which support improved reproducibility.</p> <p>We are also planning to innovate the way in which we present recommended applications and species on our product datasheets, so that only applications & species that have been tested in our own labs, our suppliers or by selected trusted collaborators are covered by our Abpromise™ guarantee.</p> <p>In preparation for this, we have started to update the applications & species that this product is Abpromise guaranteed for.</p> <p>We are also updating the applications & species that this product has been “predicted to work with,” however this information is not covered by our Abpromise guarantee.</p> <p>Applications & species from publications and Abreviews that have not been tested in our own labs or in those of our suppliers are not covered by the Abpromise guarantee.</p> <p>Please check that this product meets your needs before purchasing. If you have any questions, special requirements or concerns, please send us an inquiry and/or contact our Support team ahead of purchase. Recommended alternatives for this product can be found below, as well as customer reviews and Q&As.</p>

Properties

Form	Liquid
Storage instructions	Shipped at 4°C. Store at +4°C short term (1-2 weeks). Upon delivery aliquot. Store at -20°C long term. Avoid freeze / thaw cycle.
Storage buffer	Preservative: 0.02% Sodium azide Constituent: PBS
Purity	Protein G purified
Purification notes	Purified from tissue culture supernatant
Clonality	Monoclonal
Clone number	Psel.KO.2.7
Myeloma	NS1
Isotype	IgG1

Applications

Our [Abpromise guarantee](#) covers the use of **ab54427** in the following tested applications.

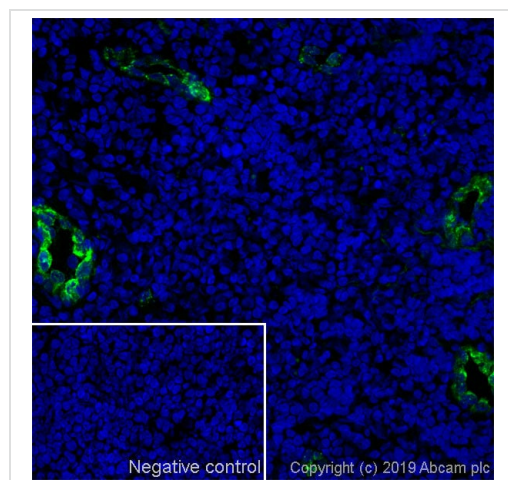
The application notes include recommended starting dilutions; optimal dilutions/concentrations should be determined by the end user.

Application	Abreviews	Notes
IHC-Fr		Use a concentration of 5 µg/ml.
Flow Cyt		Use a concentration of 0.2 µg/ml. ab170190 - Mouse monoclonal IgG1, is suitable for use as an isotype control with this antibody.

Target

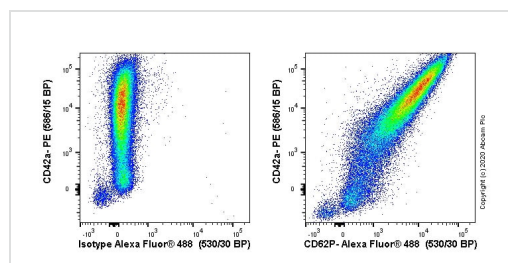
Function	Ca(2+)-dependent receptor for myeloid cells that binds to carbohydrates on neutrophils and monocytes. Mediates the interaction of activated endothelial cells or platelets with leukocytes. The ligand recognized is sialyl-Lewis X. Mediates rapid rolling of leukocyte rolling over vascular surfaces during the initial steps in inflammation through interaction with PSGL1.
Tissue specificity	Stored in the alpha-granules of platelets and Weibel-Palade bodies of endothelial cells. Upon cell activation by agonists, P-selectin is transported rapidly to the cell surface.
Involvement in disease	Defects in SELP may be a cause of susceptibility to ischemic stroke (ISCHSTR) [MIM:601367]; also known as cerebrovascular accident or cerebral infarction. A stroke is an acute neurologic event leading to death of neural tissue of the brain and resulting in loss of motor, sensory and/or cognitive function. Ischemic strokes, resulting from vascular occlusion, is considered to be a highly complex disease consisting of a group of heterogeneous disorders with multiple genetic and environmental risk factors.
Sequence similarities	Belongs to the selectin/LECAM family. Contains 1 C-type lectin domain. Contains 1 EGF-like domain. Contains 9 Sushi (CCP/SCR) domains.
Cellular localization	Membrane.

Images



Immunohistochemistry (Frozen sections) - Anti-CD62P antibody [Psel.KO.2.7] (ab54427)

IHC image of CD62P staining in a section of frozen normal human tonsil*. The section was fixed using 10% formaldehyde in 1XPBS for 10 minutes. No antigen retrieval step was performed prior to staining. Non-specific protein-protein interactions were then blocked in TBS containing 0.025% (v/v) Triton X-100, 0.3M glycine and 1% (w/v) BSA for 1h at room temperature. The section was then incubated overnight at +4°C in TBS containing 0.025% (v/v) Triton X-100 and 1% (w/v) BSA with ab54427 at 5µg/ml. The section was then incubated with [ab150117](#) (Goat Anti-Mouse IgG H&L (Alexa Fluor® 488), 1/1000)) (shown in green) for 1 hour at room temperature. DAPI was used to stain the cell nuclei (blue) at a concentration of 1.43µM. The secondary-only control insert image is taken from an identical assay without primary antibody. The section was then mounted using Fluoromount®. Image was taken with a confocal microscope (Leica-Microsystems, TCS SP8). For IHC staining systems (automated and non-automated), customers should optimize variable parameters such as antibody concentrations and incubation times. *Tissue obtained from the Human Research Tissue Bank, supported by the NIHR Cambridge Biomedical Research Centre.



Flow Cytometry - Anti-CD62P antibody [Psel.KO.2.7] (ab54427)

Flow cytometry staining of human whole blood with ab54427 (right) or mouse IgG1κ ([ab170190](#)) isotype (left). Red blood cells of 200 µL blood were lysed, then cells were incubated for 30 min on ice in 1x PBS containing 10 µg/ml human IgG and 10% normal goat serum to block Fc receptors and non-specific protein-protein interaction followed by the antibody (ab54427) or mouse IgG1κ ([ab170190](#)) isotype (1×10^6 in 100 µL at 0.2 µg/mL) for 30 min on ice.

The secondary antibody Goat anti-mouse IgG H&L (Alexa Fluor® 488, pre-adsorbed) ([ab150117](#)) was used at 1/2000 dilution for 30 min on ice.

The cells were simultaneously stained with CD42a PE.

Acquisition of >30000 events were collected using a 50 mW Blue laser (488nm) and 525/40 bandpass filter. Events were gated on alive neutrophils.

Please note: All products are "FOR RESEARCH USE ONLY. NOT FOR USE IN DIAGNOSTIC PROCEDURES"

Our Abpromise to you: Quality guaranteed and expert technical support

- Replacement or refund for products not performing as stated on the datasheet
- Valid for 12 months from date of delivery
- Response to your inquiry within 24 hours

- We provide support in Chinese, English, French, German, Japanese and Spanish
- Extensive multi-media technical resources to help you
- We investigate all quality concerns to ensure our products perform to the highest standards

If the product does not perform as described on this datasheet, we will offer a refund or replacement. For full details of the Abpromise, please visit <https://www.abcam.com/abpromise> or contact our technical team.

Terms and conditions

- Guarantee only valid for products bought direct from Abcam or one of our authorized distributors