

Product datasheet

Anti-CD63 antibody [NK1/C3] ab1318

KO VALIDATED

★★★★☆ [1 Abreviews](#) [15 References](#) [4 Images](#)

Overview

Product name	Anti-CD63 antibody [NK1/C3]
Description	Mouse monoclonal [NK1/C3] to CD63
Host species	Mouse
Specificity	This antibody is specific to a 53 kD protein, expressed on activated platelets. CD63 is a lysosomal membrane glycoprotein that is translocated to plasma membrane after platelet activation. It is also expressed on granulocytes, B cells and T cells.
Tested applications	Suitable for: ICC/IF, IHC-P, Flow Cyt
Species reactivity	Reacts with: Human
Immunogen	Tissue, cells or virus corresponding to CD63. Smooth plasma membrane fraction of MeWo cells.
Positive control	ICC/IF: HAP1 cells (HAP1-CD63 knockout cells used as negative cell line)
General notes	<p>CD63 is expressed on activated platelets. CD63 is a lysosomal membrane glycoprotein that is translocated to plasma membrane after platelet activation. It is also present in monocytes and macrophages and is weakly expressed in granulocytes, B, and T cells. CD63 is identical to the melanoma-associated antigen ME491 and to the platelet antigen PTLGP40.</p> <p>The Life Science industry has been in the grips of a reproducibility crisis for a number of years. Abcam is leading the way in addressing this with our range of recombinant monoclonal antibodies and knockout edited cell lines for gold-standard validation. Please check that this product meets your needs before purchasing.</p> <p>If you have any questions, special requirements or concerns, please send us an inquiry and/or contact our Support team ahead of purchase. Recommended alternatives for this product can be found below, along with publications, customer reviews and Q&As</p>

Properties

Form	Liquid
Storage instructions	Shipped at 4°C. Store at +4°C short term (1-2 weeks). Store at -20°C or -80°C. Avoid freeze / thaw cycle.
Storage buffer	pH: 7.3

Preservative: 0.05% Sodium azide

Constituent: 1% BSA

Purity	IgG fraction
Primary antibody notes	CD63 is expressed on activated platelets. CD63 is a lysosomal membrane glycoprotein that is translocated to plasma membrane after platelet activation. It is also present in monocytes and macrophages and is weakly expressed in granulocytes, B, and T cells. CD63 is identical to the melanoma-associated antigen ME491 and to the platelet antigen PTLGP40.
Clonality	Monoclonal
Clone number	NK1/C3
Isotype	IgG1
Light chain type	kappa

Applications

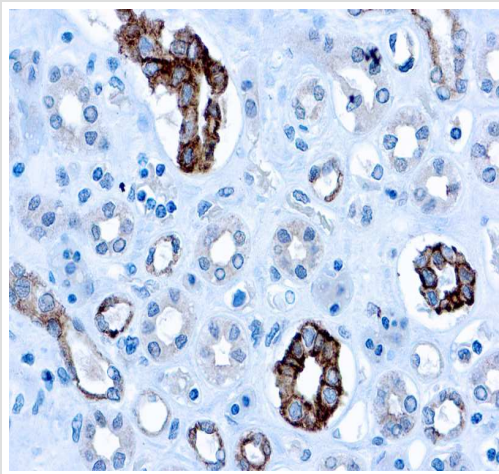
The Abpromise guarantee Our **Abpromise guarantee** covers the use of ab1318 in the following tested applications. The application notes include recommended starting dilutions; optimal dilutions/concentrations should be determined by the end user.

Application	Abreviews	Notes
ICC/IF		Use a concentration of 1 - 5 µg/ml. Signal can be observed in cells fixed with methanol or PFA.
IHC-P		1/100 - 1/200. Perform heat mediated antigen retrieval before commencing with IHC staining protocol.
Flow Cyt		1/100. (Also see PMID 19129916). ab170190 - Mouse monoclonal IgG1, is suitable for use as an isotype control with this antibody.

Target

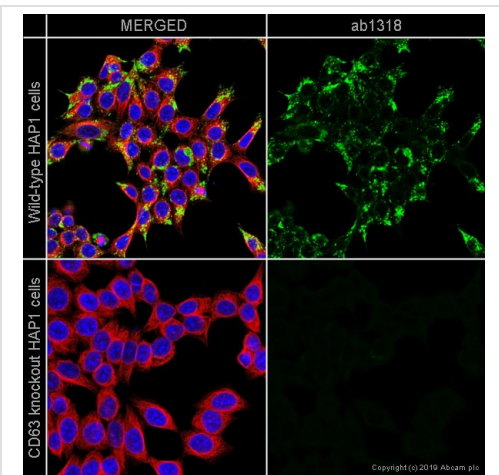
Function	This antigen is associated with early stages of melanoma tumor progression. May play a role in growth regulation.
Tissue specificity	Dysplastic nevi, radial growth phase primary melanomas, hematopoietic cells, tissue macrophages.
Sequence similarities	Belongs to the tetraspanin (TM4SF) family.
Cellular localization	Cell membrane. Lysosome membrane. Late endosome membrane. Also found in Weibel-Palade bodies of endothelial cells. Located in platelet dense granules.

Images



Immunohistochemistry (Formalin/PFA-fixed paraffin-embedded sections) - Anti-CD63 antibody [NK1/C3] (ab1318)

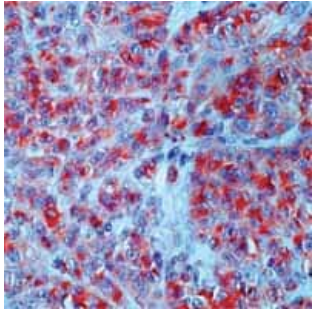
Formalin-fixed, paraffin-embedded human melanoma tissue stained for CD63 using ab1318 at 1/100 dilution in immunohistochemical analysis. Antigen retrieval with citrate buffer pH 6.0



Immunocytochemistry/ Immunofluorescence - Anti-CD63 antibody [NK1/C3] (ab1318)

ab1318 staining CD63 in wild-type HAP1 cells (top panel) and CD63 knockout HAP1 cells (bottom panel). The cells were fixed with 100% methanol (5min), permeabilized with 0.1% Triton X-100 for 5 minutes and then blocked with 1% BSA/10% normal goat serum/0.3M glycine in 0.1% PBS-Tween for 1h. The cells were then incubated with ab1318 at 1ug/ml and **ab6046** (Tubulin) at 1/1000 dilution overnight at +4°C, followed by a further incubation at room temperature for 1h with a goat secondary antibody to mouse IgG (Alexa Fluor® 488) (**ab150117**) at 2 µg/ml (shown in green) and a goat secondary antibody to rabbit IgG (Alexa Fluor® 594) (**ab150080**) at 2 µg/ml (shown in pseudo color red). Nuclear DNA was labelled in blue with DAPI.

Image was taken with a confocal microscope (Leica-Microsystems, TCS SP8).



Immunohistochemistry (Formalin/PFA-fixed paraffin-embedded sections) - Anti-CD63 antibody [NK1/C3] (ab1318)

ab1318 staining human melanoma by IHC-P.

Flow Cytometry - Anti-CD63 antibody [NK1/C3] (ab1318)

Overlay histogram showing HL60 cells stained with ab1318 (red line). The cells were fixed with 4% paraformaldehyde (10 min) and then permeabilized with 0.1% PBS-Tween for 20 min. The cells were then incubated in 1x PBS / 10% normal goat serum / 0.3M glycine to block non-specific protein-protein interactions followed by the antibody (ab1318, 1/100 dilution) for 30 min at 22°C. The secondary antibody used was DyLight® 488 goat anti-Mouse IgG (H+L) ([ab96879](#)) at 1/500 dilution for 30 min at 22°C. Isotype control antibody (black line) was Mouse IgG1 [ICIGG1] ([ab91353](#), 2 µg/1x10⁶ cells) used under the same conditions. Acquisition of >5,000 events was performed. This antibody gave a positive signal in HL60 cells fixed with 80% methanol (5 min)/permeabilized with 0.1% PBS-Tween for 20 min used under the same conditions.

Please note: All products are "FOR RESEARCH USE ONLY. NOT FOR USE IN DIAGNOSTIC PROCEDURES"

Our Abpromise to you: Quality guaranteed and expert technical support

- Replacement or refund for products not performing as stated on the datasheet
- Valid for 12 months from date of delivery
- Response to your inquiry within 24 hours
- We provide support in Chinese, English, French, German, Japanese and Spanish
- Extensive multi-media technical resources to help you
- We investigate all quality concerns to ensure our products perform to the highest standards

If the product does not perform as described on this datasheet, we will offer a refund or replacement. For full details of the Abpromise, please visit <https://www.abcam.com/abpromise> or contact our technical team.

Terms and conditions

- Guarantee only valid for products bought direct from Abcam or one of our authorized distributors