


Product datasheet

# Anti-CD63 antibody [NK1/C3] - Late Endosome Marker (Phycoerythrin) ab215431

1 Image

Overview

---

<b>Product name</b>	Anti-CD63 antibody [NK1/C3] - Late Endosome Marker (Phycoerythrin)
<b>Description</b>	Mouse monoclonal [NK1/C3] to CD63 - Late Endosome Marker (Phycoerythrin)
<b>Host species</b>	Mouse
<b>Conjugation</b>	Phycoerythrin. Ex: 488nm, Em: 575nm
<b>Tested applications</b>	<b>Suitable for:</b> Flow Cyt, IHC-P
<b>Species reactivity</b>	<b>Reacts with:</b> Human <b>Predicted to work with:</b> Mouse 
<b>Immunogen</b>	Tissue, cells or virus corresponding to Human CD63. Smooth plasma membrane fraction of MeWo cells. Database link: <a href="#">P08962</a>
<b>Positive control</b>	MCF7 cells.

Properties

---

<b>Form</b>	Liquid
<b>Storage instructions</b>	Shipped at 4°C. Store at +4°C. Store In the Dark.
<b>Storage buffer</b>	Preservative: 0.05% Sodium azide Constituents: 0.05% BSA, 99% PBS
<b>Purity</b>	Protein A/G purified
<b>Clonality</b>	Monoclonal
<b>Clone number</b>	NK1/C3
<b>Isotype</b>	IgG1
<b>Light chain type</b>	kappa

Applications

---

Our [Abpromise guarantee](#) covers the use of **ab215431** in the following tested applications.

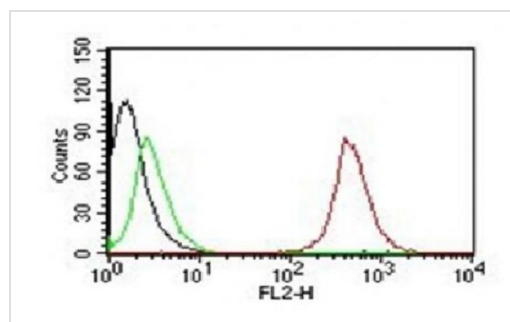
The application notes include recommended starting dilutions; optimal dilutions/concentrations should be determined by the end user.

Application	Abreviews	Notes
Flow Cyt		Use 5µl for 10 <sup>6</sup> cells.
IHC-P		1/50 - 1/100. Perform heat mediated antigen retrieval with citrate buffer pH 6 before commencing with IHC staining protocol.

## Target

<b>Function</b>	This antigen is associated with early stages of melanoma tumor progression. May play a role in growth regulation.
<b>Tissue specificity</b>	Dysplastic nevi, radial growth phase primary melanomas, hematopoietic cells, tissue macrophages.
<b>Sequence similarities</b>	Belongs to the tetraspanin (TM4SF) family.
<b>Cellular localization</b>	Cell membrane. Lysosome membrane. Late endosome membrane. Also found in Weibel-Palade bodies of endothelial cells. Located in platelet dense granules.

## Images



Flow Cytometric analysis of MCF7 cells labeling CD63 with 5 µL ab215431 (red). Black: Cells alone; Green: Isotype Control.

Flow Cytometry - Anti-CD63 antibody [NK1/C3] - Late Endosome Marker (Phycocerythrin) (ab215431)

**Please note:** All products are "FOR RESEARCH USE ONLY. NOT FOR USE IN DIAGNOSTIC PROCEDURES"

## Our Abpromise to you: Quality guaranteed and expert technical support

- Replacement or refund for products not performing as stated on the datasheet
- Valid for 12 months from date of delivery
- Response to your inquiry within 24 hours
- We provide support in Chinese, English, French, German, Japanese and Spanish
- Extensive multi-media technical resources to help you
- We investigate all quality concerns to ensure our products perform to the highest standards

If the product does not perform as described on this datasheet, we will offer a refund or replacement. For full details of the Abpromise,

please visit <https://www.abcam.com/abpromise> or contact our technical team.

## **Terms and conditions**

---

- Guarantee only valid for products bought direct from Abcam or one of our authorized distributors