


Product datasheet

Anti-CD68 antibody [C68/684] ab201340

★★★★★ 2 Abreviews 45 References 4 Images

Overview

Product name	Anti-CD68 antibody [C68/684]
Description	Mouse monoclonal [C68/684] to CD68
Host species	Mouse
Specificity	ab201340 recognizes a glycoprotein of 110kDa, which is identified as CD68.
Tested applications	Suitable for: WB, Flow Cyt, IHC-P, ICC/IF
Species reactivity	Reacts with: Human Predicted to work with: Monkey 
Immunogen	Recombinant full length protein corresponding to Human CD68. (Subcellular fraction of Human alveolar macrophages). Database link: P34810
Positive control	IHC-P: Human tonsil and histiocytoma tissues; ICC/IF: U-87 MG cells; Flow Cyt: U-87 MG cells; WB: Human spleen tissue lysate.
General notes	<p>ab201340 stains macrophages in a wide variety of Human tissues, including Kupffer cells and macrophages in the red pulp of the spleen, in lamina propria of the gut, in lung alveoli, and in bone marrow. It reacts with myeloid precursors and peripheral blood granulocytes. It also reacts with plasmacytoid T cells, which are supposed to be of monocyte/macrophage origin. It shows strong granular cytoplasmic staining of chronic and acute myeloid leukemia and also reacts with rare cases of true histiocytic neoplasia. Lymphomas are negative or show few granules.</p> <p>The Life Science industry has been in the grips of a reproducibility crisis for a number of years. Abcam is leading the way in addressing this with our range of recombinant monoclonal antibodies and knockout edited cell lines for gold-standard validation. Please check that this product meets your needs before purchasing.</p> <p>If you have any questions, special requirements or concerns, please send us an inquiry and/or contact our Support team ahead of purchase. Recommended alternatives for this product can be found below, along with publications, customer reviews and Q&As</p>

Properties

Form	Liquid
Storage instructions	Shipped at 4°C. Store at +4°C short term (1-2 weeks). Upon delivery aliquot. Store at -20°C long term. Avoid freeze / thaw cycle.

Storage buffer	pH: 7.2 Preservative: 0.05% Sodium azide Constituents: 99% PBS, 0.05% BSA
Purity	Protein A/G purified
Purification notes	ab201340 is purified from Bioreactor Concentrate by Protein A/G column chromatography.
Clonality	Monoclonal
Clone number	C68/684
Isotype	IgG1
Light chain type	kappa

Applications

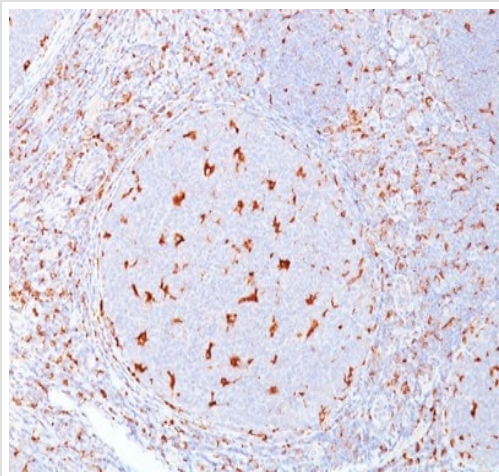
The Abpromise guarantee Our [Abpromise guarantee](#) covers the use of ab201340 in the following tested applications. The application notes include recommended starting dilutions; optimal dilutions/concentrations should be determined by the end user.

Application	Abreviews	Notes
WB		Use a concentration of 1 - 2 µg/ml. Detects a band of approximately 110 kDa (predicted molecular weight: 37 kDa).
Flow Cyt		Use 1-2µg for 10 ⁶ cells. ab170190 - Mouse monoclonal IgG1, is suitable for use as an isotype control with this antibody.
IHC-P	★★★★★ (2)	Use a concentration of 1 - 2 µg/ml. Perform heat mediated antigen retrieval with 10 mM Tris with 1 mM EDTA buffer pH 9.0 for 45 minutes at 95°C followed by cooling at RT for 20 minutes. Incubate with primary for 30 minutes at RT.
ICC/IF		Use a concentration of 1 - 2 µg/ml.

Target

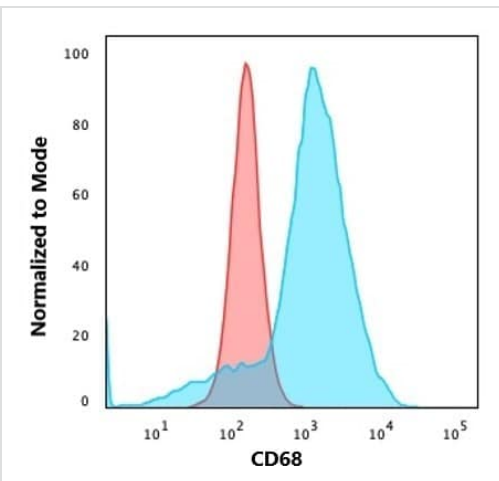
Function	Could play a role in phagocytic activities of tissue macrophages, both in intracellular lysosomal metabolism and extracellular cell-cell and cell-pathogen interactions. Binds to tissue- and organ-specific lectins or selectins, allowing homing of macrophage subsets to particular sites. Rapid recirculation of CD68 from endosomes and lysosomes to the plasma membrane may allow macrophages to crawl over selectin-bearing substrates or other cells.
Tissue specificity	Highly expressed by blood monocytes and tissue macrophages. Also expressed in lymphocytes, fibroblasts and endothelial cells. Expressed in many tumor cell lines which could allow them to attach to selectins on vascular endothelium, facilitating their dissemination to secondary sites.
Sequence similarities	Belongs to the LAMP family.
Post-translational modifications	N- and O-glycosylated.

Images



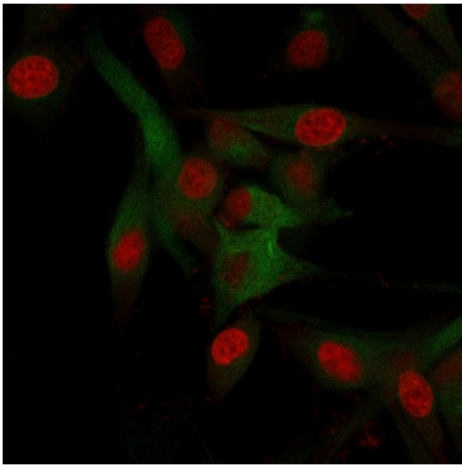
Immunohistochemical analysis of formalin-fixed, paraffin-embedded Human tonsil tissue labeling CD68 with ab201340 at 1 µg/ml.

Immunohistochemistry (Formalin/PFA-fixed paraffin-embedded sections) - Anti-CD68 antibody [C68/684] (ab201340)



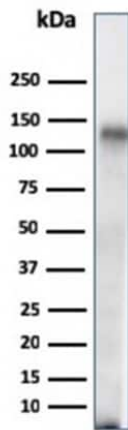
Flow Cytometry analysis of U-87 MG (human glioblastoma-astrocytoma epithelial cell line) cells labeling CD68 with ab201340. Goat Anti-Mouse IgG was used as the secondary antibody (blue); Isotype Control (red).

Flow Cytometry - Anti-CD68 antibody [C68/684] (ab201340)



Immunocytochemistry/immunofluorescence analysis of U-87 MG (human glioblastoma-astrocytoma epithelial cell line) cells labelling CD68 with ab201340. Goat Anti-Mouse IgG was used as the secondary antibody (green). Nuclear DNA stained red.

Immunocytochemistry/ Immunofluorescence - Anti-CD68 antibody [C68/684] (ab201340)



Anti-CD68 antibody [C68/684] (ab201340) + Human spleen tissue lysate

Predicted band size: 37 kDa

Additional bands at: 110 kDa (possible glycosylated form)

Western blot - Anti-CD68 antibody [C68/684] (ab201340)

Please note: All products are "FOR RESEARCH USE ONLY. NOT FOR USE IN DIAGNOSTIC PROCEDURES"

Our Promise to you: Quality guaranteed and expert technical support

- Replacement or refund for products not performing as stated on the datasheet

- Valid for 12 months from date of delivery
- Response to your inquiry within 24 hours

- We provide support in Chinese, English, French, German, Japanese and Spanish
- Extensive multi-media technical resources to help you
- We investigate all quality concerns to ensure our products perform to the highest standards

If the product does not perform as described on this datasheet, we will offer a refund or replacement. For full details of the Abpromise, please visit <https://www.abcam.com/abpromise> or contact our technical team.

Terms and conditions

- Guarantee only valid for products bought direct from Abcam or one of our authorized distributors