

Product datasheet

Anti-CD68 antibody [KP1] - BSA and Azide free ab213096

[1 References](#) [1 Image](#)

Overview

Product name	Anti-CD68 antibody [KP1] - BSA and Azide free
Description	Mouse monoclonal [KP1] to CD68 - BSA and Azide free
Host species	Mouse
Tested applications	Suitable for: Flow Cyt, ICC/IF, IHC-P
Species reactivity	Reacts with: Rabbit, Cat, Human, Monkey Does not react with: Chicken, Dog, Pig
Immunogen	Tissue, cells or virus corresponding to Human CD68. (Subcellular fraction of Human alveolar macrophages).
Positive control	Tonsil, lymph node or spleen tissues.

Properties

Form	Liquid
Storage instructions	Shipped at 4°C. Store at +4°C short term (1-2 weeks). Upon delivery aliquot. Store at -20°C long term. Avoid freeze / thaw cycle.
Storage buffer	Constituent: 100% PBS
Purity	Protein G purified
Purification notes	Purified from bioreactor concentrate.
Clonality	Monoclonal
Clone number	KP1
Isotype	IgG1
Light chain type	kappa

Applications

Our [Abpromise guarantee](#) covers the use of **ab213096** in the following tested applications.

The application notes include recommended starting dilutions; optimal dilutions/concentrations should be determined by the end user.

Application	Abreviews	Notes
Flow Cyt		Use 0.5-1µg for 10 ⁶ cells. Final volume 100 µL.
ICC/IF		Use a concentration of 0.5 - 1 µg/ml.
IHC-P		Use a concentration of 0.25 - 0.5 µg/ml. Perform heat mediated antigen retrieval with citrate buffer pH 6 before commencing with IHC staining protocol. 30 minutes at room temperature.

Target

Function Could play a role in phagocytic activities of tissue macrophages, both in intracellular lysosomal metabolism and extracellular cell-cell and cell-pathogen interactions. Binds to tissue- and organ-specific lectins or selectins, allowing homing of macrophage subsets to particular sites. Rapid recirculation of CD68 from endosomes and lysosomes to the plasma membrane may allow macrophages to crawl over selectin-bearing substrates or other cells.

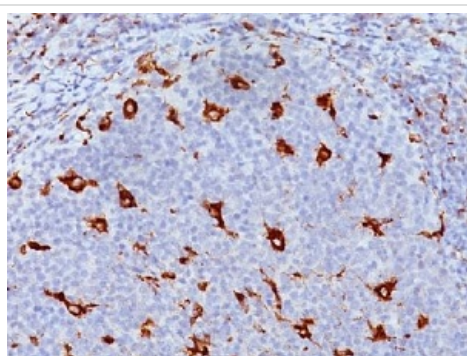
Tissue specificity Highly expressed by blood monocytes and tissue macrophages. Also expressed in lymphocytes, fibroblasts and endothelial cells. Expressed in many tumor cell lines which could allow them to attach to selectins on vascular endothelium, facilitating their dissemination to secondary sites.

Sequence similarities Belongs to the LAMP family.

Post-translational modifications N- and O-glycosylated.

Cellular localization Cell membrane and Endosome membrane. Lysosome membrane.

Images



Immunohistochemical analysis of formalin fixed paraffin-embedded Human tonsil tissue labeling CD68 with ab213096 at 0.5 µg/mL.

Immunohistochemistry (Formalin/PFA-fixed paraffin-embedded sections) - Anti-CD68 antibody [KP1] - BSA and Azide free (ab213096)

Please note: All products are "FOR RESEARCH USE ONLY. NOT FOR USE IN DIAGNOSTIC PROCEDURES"

Our Abpromise to you: Quality guaranteed and expert technical support

- Replacement or refund for products not performing as stated on the datasheet
- Valid for 12 months from date of delivery
- Response to your inquiry within 24 hours

- We provide support in Chinese, English, French, German, Japanese and Spanish
- Extensive multi-media technical resources to help you
- We investigate all quality concerns to ensure our products perform to the highest standards

If the product does not perform as described on this datasheet, we will offer a refund or replacement. For full details of the Abpromise, please visit <https://www.abcam.com/abpromise> or contact our technical team.

Terms and conditions

- Guarantee only valid for products bought direct from Abcam or one of our authorized distributors