

Product datasheet

Anti-CD68 antibody [KP1], prediluted ab845

11 References 1 Image

Overview

<b>Product name</b>	Anti-CD68 antibody [KP1], prediluted
<b>Description</b>	Mouse monoclonal [KP1] to CD68, prediluted
<b>Host species</b>	Mouse
<b>Specificity</b>	This antibody is specific to macrophages in a wide variety of human tissues. It reacts with myeloid precursors and peripheral blood granulocytes. It also stains a cell population known as Plasmacytoid T cells.
<b>Tested applications</b>	<b>Suitable for:</b> Flow Cyt, IHC-P, IHC-Fr, ICC/IF
<b>Species reactivity</b>	<b>Reacts with:</b> Human
<b>Immunogen</b>	Subcellular fraction of human alveolar macrophages.

Properties

<b>Form</b>	Liquid
<b>Storage instructions</b>	Shipped at 4°C. Store at +4°C. Do Not Freeze.
<b>Storage buffer</b>	Preservative: 0.05% Sodium azide
	Inert stabilizer
<b>Purification notes</b>	Purified from TCS
<b>Clonality</b>	Monoclonal
<b>Clone number</b>	KP1
<b>Myeloma</b>	unknown
<b>Isotype</b>	IgG1
<b>Light chain type</b>	kappa

Applications

Our [Abpromise guarantee](#) covers the use of **ab845** in the following tested applications.

The application notes include recommended starting dilutions; optimal dilutions/concentrations should be determined by the end user.

Application	Abreviews	Notes
Flow Cyt		1/4. <a href="#">ab170190</a> - Mouse monoclonal IgG1, is suitable for use as an isotype control with this antibody.
IHC-P		Use at an assay dependent concentration. Proteolytic treatment is required prior to immunostaining of formalin fixed paraffin embedded tissue sections. High temperature antigen unmasking may improve the staining.
IHC-Fr		Use at an assay dependent concentration. Acetone fixed.
ICC/IF		Use at an assay dependent concentration.

## Target

### Function

Could play a role in phagocytic activities of tissue macrophages, both in intracellular lysosomal metabolism and extracellular cell-cell and cell-pathogen interactions. Binds to tissue- and organ-specific lectins or selectins, allowing homing of macrophage subsets to particular sites. Rapid recirculation of CD68 from endosomes and lysosomes to the plasma membrane may allow macrophages to crawl over selectin-bearing substrates or other cells.

### Tissue specificity

Highly expressed by blood monocytes and tissue macrophages. Also expressed in lymphocytes, fibroblasts and endothelial cells. Expressed in many tumor cell lines which could allow them to attach to selectins on vascular endothelium, facilitating their dissemination to secondary sites.

### Sequence similarities

Belongs to the LAMP family.

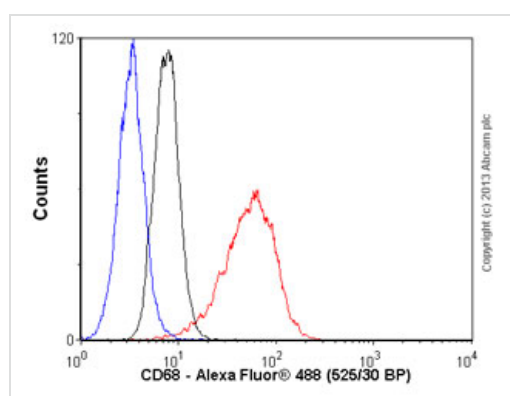
### Post-translational modifications

N- and O-glycosylated.

### Cellular localization

Cell membrane and Endosome membrane. Lysosome membrane.

## Images



Flow Cytometry - Anti-CD68 antibody [KP1], prediluted (ab845)

Overlay histogram showing THP1 cells stained with ab845 (red line). The cells were fixed with 80% methanol (5 min) and then permeabilized with 0.1% PBS-Tween for 20 min. The cells were then incubated in 1x PBS / 10% normal goat serum / 0.3M glycine to block non-specific protein-protein interactions followed by the antibody (ab845, 1/4 dilution) for 30 min at 22°C. The secondary antibody used was Alexa Fluor® 488 goat anti-mouse IgG (H&L) ([ab150113](#)) at 1/2000 dilution for 30 min at 22°C. Isotype control antibody (black line) was mouse IgG1 [ICIGG1] ([ab91353](#), 1µg/1x10<sup>6</sup> cells) used under the same conditions. Unlabelled sample (blue line) was also used as a control. Acquisition of >5,000 events were collected using a 20mW Argon ion laser (488nm) and 525/30 bandpass filter.

**Please note:** All products are "FOR RESEARCH USE ONLY. NOT FOR USE IN DIAGNOSTIC PROCEDURES"

### **Our Abpromise to you: Quality guaranteed and expert technical support**

---

- Replacement or refund for products not performing as stated on the datasheet
- Valid for 12 months from date of delivery
- Response to your inquiry within 24 hours
  
- We provide support in Chinese, English, French, German, Japanese and Spanish
- Extensive multi-media technical resources to help you
- We investigate all quality concerns to ensure our products perform to the highest standards

If the product does not perform as described on this datasheet, we will offer a refund or replacement. For full details of the Abpromise, please visit <https://www.abcam.com/abpromise> or contact our technical team.

### **Terms and conditions**

---

- Guarantee only valid for products bought direct from Abcam or one of our authorized distributors