



Product datasheet

Anti-CD6/T12 antibody [5A10A2] ab204949

3 Images

Overview

| | |
|----------------------------|--|
| Product name | Anti-CD6/T12 antibody [5A10A2] |
| Description | Mouse monoclonal [5A10A2] to CD6/T12 |
| Host species | Mouse |
| Tested applications | Suitable for: ICC/IF, Flow Cyt, WB, IHC-P |
| Species reactivity | Reacts with: Human |
| Immunogen | Recombinant fragment corresponding to Human CD6/T12 aa 18-199. Expressed in <i>E. Coli</i> . Sequence: HPS PAPPDQLNTS SAESELWEPG ERLPVRLTNG SSSCSGTVEV RLEASWEPAC GALWDSRAAE AVCRALGCGG AEAASQLAPP TPELPPPPAA GNTSVAANAT LAGAPALLCS GAEWRLCEVV EHACRSDGRR ARVTCAENRA LRLVDGGGAC AGRVEMLEHG EWGSVCDDTW DLEDAHVVC Database link: P30203  Run BLAST with  Run BLAST with |
| Positive control | Recombinant Human CD6/T12 (aa18-199) recombinant protein; CD6/T12 (aa 18-199)-hlgGFc transfected HEK293 cell lysate. |
| General notes | Previously labelled as CD6. |

Properties

| | |
|-----------------------------|---|
| Form | Liquid |
| Storage instructions | Shipped at 4°C. Store at +4°C short term (1-2 weeks). Upon delivery aliquot. Store at -20°C long term. Avoid freeze / thaw cycle. |
| Storage buffer | Preservative: 0.05% Sodium azide Constituent: 99% PBS |
| Purity | Protein G purified |
| Purification notes | Purified from tissue culture supernatant. |
| Clonality | Monoclonal |
| Clone number | 5A10A2 |

Isotype

IgG2b

Applications

Our [Abpromise guarantee](#) covers the use of **ab204949** in the following tested applications.

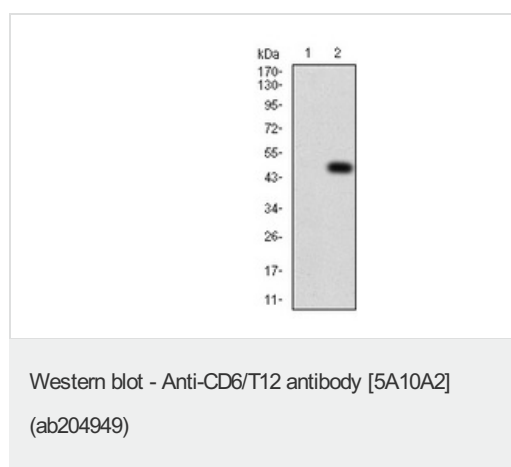
The application notes include recommended starting dilutions; optimal dilutions/concentrations should be determined by the end user.

| Application | Abreviews | Notes |
|-------------|-----------|---|
| ICC/IF | | 1/200 - 1/1000. |
| Flow Cyt | | 1/200 - 1/400. |
| WB | | 1/500 - 1/2000. Predicted molecular weight: 72 kDa. |
| IHC-P | | 1/200 - 1/1000. |

Target

| | |
|---|--|
| Function | Involved in cell adhesion. Binds to CD166. |
| Tissue specificity | Expressed by thymocytes, mature T-cells, a subset of B-cells known as B-1 cells, and by some cells in the brain. |
| Sequence similarities | Contains 3 SRCR domains. |
| Post-translational modifications | After T-cell activation, becomes hyperphosphorylated on Ser and Thr residues and phosphorylated on Tyr residues. Contains intrachain disulfide bond(s). |
| Cellular localization | Membrane. |

Images

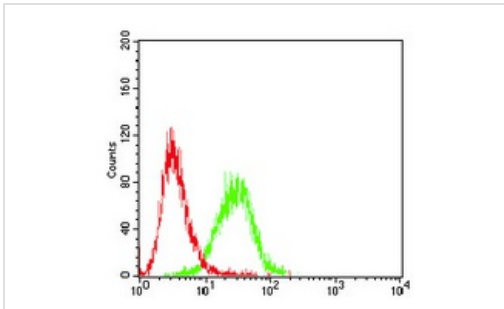


All lanes : Anti-CD6/T12 antibody [5A10A2] (ab204949) at 1/500 dilution

Lane 1 : HEK293 cell lysate

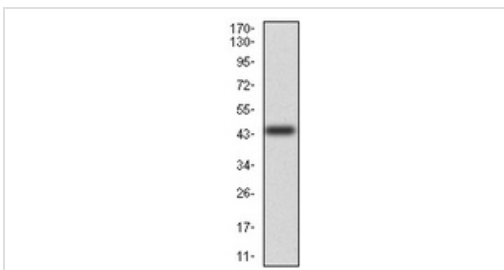
Lane 2 : CD6/T12 (aa 18-199)-hlgGFc transfected HEK293 cell lysate

Predicted band size: 72 kDa



Flow Cytometry - Anti-CD6/T12 antibody [5A10A2] (ab204949)

Flow cytometric analysis of Jurkat cells labeling CD6/T12 with ab204949 at 1/200 dilution (green) compared with a negative control (red).



Western blot - Anti-CD6/T12 antibody [5A10A2] (ab204949)

Anti-CD6/T12 antibody [5A10A2] (ab204949) at 1/500 dilution + Human CD6/T12 (aa: 18-199) recombinant protein

Predicted band size: 72 kDa

Please note: All products are "FOR RESEARCH USE ONLY. NOT FOR USE IN DIAGNOSTIC PROCEDURES"

Our Abpromise to you: Quality guaranteed and expert technical support

- Replacement or refund for products not performing as stated on the datasheet
- Valid for 12 months from date of delivery
- Response to your inquiry within 24 hours
- We provide support in Chinese, English, French, German, Japanese and Spanish
- Extensive multi-media technical resources to help you
- We investigate all quality concerns to ensure our products perform to the highest standards

If the product does not perform as described on this datasheet, we will offer a refund or replacement. For full details of the Abpromise, please visit <https://www.abcam.com/abpromise> or contact our technical team.

Terms and conditions

- Guarantee only valid for products bought direct from Abcam or one of our authorized distributors