

Product datasheet

Anti-CD73 antibody [AD2], prediluted (Allophycocyanin) ab155378

1 References 1 Image

Overview

Product name	Anti-CD73 antibody [AD2], prediluted (Allophycocyanin)
Description	Mouse monoclonal [AD2] to CD73, prediluted (Allophycocyanin)
Host species	Mouse
Conjugation	Allophycocyanin. Ex: 645nm, Em: 660nm
Tested applications	Suitable for: Flow Cyt
Species reactivity	Reacts with: Human
Immunogen	The details of the immunogen for this antibody are not available.
Positive control	Normal Human peripheral blood cells.

Properties

Form	Prediluted
Storage instructions	Shipped at 4°C. Store at +4°C.
Storage buffer	pH: 7.20 Preservative: 0.09% Sodium azide Constituents: 99% PBS, 0.2% BSA
Purity	Protein G purified
Clonality	Monoclonal
Clone number	AD2
Isotype	IgG1
Light chain type	kappa

Applications

Our [Abpromise guarantee](#) covers the use of **ab155378** in the following tested applications.

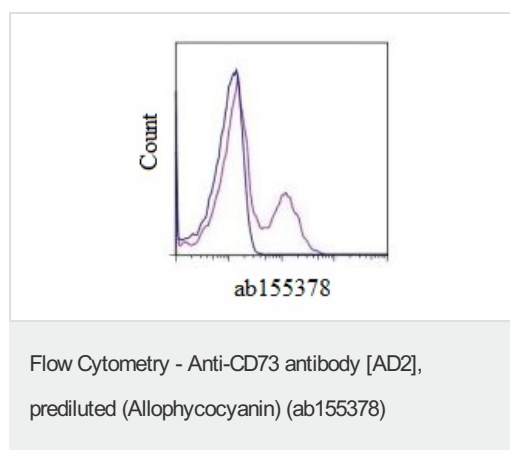
The application notes include recommended starting dilutions; optimal dilutions/concentrations should be determined by the end user.

Application	Abreviews	Notes
Flow Cyt		Use 5µl for 10 ⁶ cells. ab37391 - Mouse monoclonal IgG1, is suitable for use as an isotype control with this antibody.

Target

Function	Hydrolyzes extracellular nucleotides into membrane permeable nucleosides.
Involvement in disease	Defects in NT5E are the cause of calcification of joints and arteries (CAJA) [MIM:211800]. A condition characterized by adult-onset calcification of the lower extremity arteries, including the iliac, femoral and tibial arteries, and hand and foot capsule joints. Age of onset has been reported as early as the second decade of life, usually involving intense joint pain or calcification in the hands.
Sequence similarities	Belongs to the 5'-nucleotidase family.
Cellular localization	Cell membrane.

Images



Flow Cytometric analysis of normal Human peripheral blood cells labeling CD73 with ab155378 (purple histogram) at 0.125 µg/test in 100 µl final volume or an equal amount of Mouse IgG1 kappa Isotype Control APC (blue histogram). Cells in the lymphocyte gate were used for analysis.

Please note: All products are "FOR RESEARCH USE ONLY. NOT FOR USE IN DIAGNOSTIC PROCEDURES"

Our Abpromise to you: Quality guaranteed and expert technical support

- Replacement or refund for products not performing as stated on the datasheet
- Valid for 12 months from date of delivery
- Response to your inquiry within 24 hours
- We provide support in Chinese, English, French, German, Japanese and Spanish
- Extensive multi-media technical resources to help you
- We investigate all quality concerns to ensure our products perform to the highest standards

If the product does not perform as described on this datasheet, we will offer a refund or replacement. For full details of the Abpromise, please visit <https://www.abcam.com/abpromise> or contact our technical team.

Terms and conditions

- Guarantee only valid for products bought direct from Abcam or one of our authorized distributors