

Product datasheet

Anti-CD8 alpha antibody [YTC182.20] ab60076

★★★★★ 1 Abreviews 9 References 1 Image

Overview

Product name	Anti-CD8 alpha antibody [YTC182.20]
Description	Rat monoclonal [YTC182.20] to CD8 alpha
Host species	Rat
Specificity	Recognizes the human CD8 alpha cell surface antigen
Tested applications	Suitable for: Flow Cyt
Species reactivity	Reacts with: Human, Monkey
Immunogen	Tissue, cells or virus corresponding to Human CD8 alpha. Mouse L cells transfected with human CD8 alpha gene. Database link: P01732
Positive control	Human peripheral blood lymphocytes.
General notes	<p>The Life Science industry has been in the grips of a reproducibility crisis for a number of years. Abcam is leading the way in addressing this with our range of recombinant monoclonal antibodies and knockout edited cell lines for gold-standard validation. Please check that this product meets your needs before purchasing.</p> <p>If you have any questions, special requirements or concerns, please send us an inquiry and/or contact our Support team ahead of purchase. Recommended alternatives for this product can be found below, along with publications, customer reviews and Q&As</p>

Properties

Form	Liquid
Storage instructions	Shipped at 4°C. Store at +4°C short term (1-2 weeks). Upon delivery aliquot. Store at -20°C long term.
Storage buffer	pH: 7.40 Preservative: 0.09% Sodium azide Constituent: PBS
Purity	Protein G purified
Purification notes	Purified from tissue culture supernatant.
Clonality	Monoclonal
Clone number	YTC182.20

Myeloma Y3/Ag1.2.3
Isotype IgG2b

Applications

The Abpromise guarantee Our [Abpromise guarantee](#) covers the use of ab60076 in the following tested applications. The application notes include recommended starting dilutions; optimal dilutions/concentrations should be determined by the end user.

Application	Abreviews	Notes
Flow Cyt		1/100 - 1/200. Use 10µl of the suggested working dilution to label 10 ⁶ cells in 100µl. ab18536 - Rat monoclonal IgG2b, is suitable for use as an isotype control with this antibody.

Target

Function Identifies cytotoxic/suppressor T-cells that interact with MHC class I bearing targets. CD8 is thought to play a role in the process of T-cell mediated killing. CD8 alpha chains binds to class I MHC molecules alpha-3 domains.

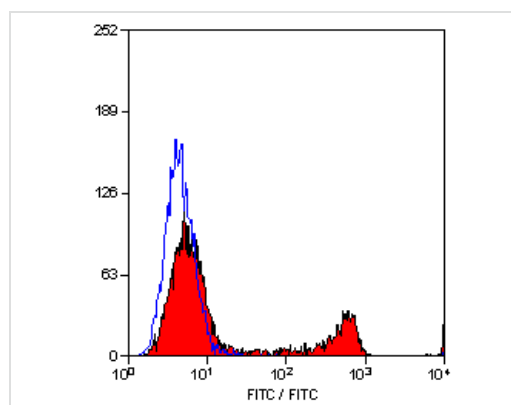
Involvement in disease Defects in CD8A are a cause of familial CD8 deficiency (CD8 deficiency) [MIM:608957]. Familial CD8 deficiency is a novel autosomal recessive immunologic defect characterized by absence of CD8+ cells, leading to recurrent bacterial infections.

Sequence similarities Contains 1 Ig-like V-type (immunoglobulin-like) domain.

Post-translational modifications All of the five most carboxyl-terminal cysteines form inter-chain disulfide bonds in dimers and higher multimers, while the four N-terminal cysteines do not.

Cellular localization Secreted and Cell membrane.

Images



ab60076 at 1/100 dilution staining CD8 alpha in human peripheral blood lymphocytes by Flow Cytometry.

Flow Cytometry - Anti-CD8 alpha antibody
[YTC182.20] (ab60076)

Please note: All products are "FOR RESEARCH USE ONLY. NOT FOR USE IN DIAGNOSTIC PROCEDURES"

Our Abpromise to you: Quality guaranteed and expert technical support

- Replacement or refund for products not performing as stated on the datasheet
- Valid for 12 months from date of delivery
- Response to your inquiry within 24 hours

- We provide support in Chinese, English, French, German, Japanese and Spanish
- Extensive multi-media technical resources to help you
- We investigate all quality concerns to ensure our products perform to the highest standards

If the product does not perform as described on this datasheet, we will offer a refund or replacement. For full details of the Abpromise, please visit <https://www.abcam.com/abpromise> or contact our technical team.

Terms and conditions

- Guarantee only valid for products bought direct from Abcam or one of our authorized distributors