

Product datasheet

Anti-CD8 beta antibody [H35-17.2] (PE/Cy5®) ab95769

3 References 1 Image

Overview

<b>Product name</b>	Anti-CD8 beta antibody [H35-17.2] (PE/Cy5®)
<b>Description</b>	Rat monoclonal [H35-17.2] to CD8 beta (PE/Cy5®)
<b>Host species</b>	Rat
<b>Conjugation</b>	PE/Cy5®. Ex: 496nm, Em: 670nm
<b>Tested applications</b>	<b>Suitable for:</b> Flow Cyt
<b>Species reactivity</b>	<b>Reacts with:</b> Mouse
<b>Immunogen</b>	5-day mixed leukocyte culture population, C57BL/6 anti-BALB/c
<b>Positive control</b>	C57Bl/6 splenocytes

Properties

<b>Form</b>	Liquid
<b>Storage instructions</b>	Shipped at 4°C. Store at +4°C.
<b>Storage buffer</b>	Preservative: 0.09% Sodium Azide Constituents: PBS, pH 7.2
<b>Purity</b>	Protein G purified
<b>Clonality</b>	Monoclonal
<b>Clone number</b>	H35-17.2
<b>Isotype</b>	IgG2b
<b>Light chain type</b>	kappa

Applications

Our [Abpromise guarantee](#) covers the use of **ab95769** in the following tested applications.

The application notes include recommended starting dilutions; optimal dilutions/concentrations should be determined by the end user.

Application	Abreviews	Notes
Flow Cyt		Use 0.125µg for 10 <sup>5-8</sup> cells. Recommended final staining volume is 100µl.

## Target

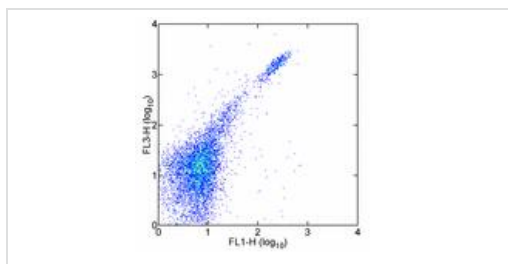
---

<b>Function</b>	Identifies cytotoxic/suppressor T-cells that interact with MHC class I bearing targets. CD8 is thought to play a role in the process of T-cell mediated killing.
<b>Tissue specificity</b>	Isoform 1, isoform 3, isoform 5, isoform 6, isoform 7 and isoform 8 are expressed in both thymus and peripheral CD8+ T-cells. Expression of isoform 1 is higher in thymus CD8+ T-cells than in peripheral CD8+ T-cells. Expression of isoform 6 is higher in peripheral CD8+ T-cells than in thymus CD8+ T-cells.
<b>Sequence similarities</b>	Contains 1 Ig-like V-type (immunoglobulin-like) domain.
<b>Post-translational modifications</b>	Phosphorylated as a consequence of T-cell activation.
<b>Cellular localization</b>	Secreted and Cell membrane.

---

## Images

---



Staining of C57Bl/6 splenocytes with Anti-Mouse CD8a FITC and ab95769 at 0.06 µg. Cells in the lymphocyte gate were used for analysis.

Flow Cytometry - Anti-CD8 beta antibody [H35-17.2]  
(PE/Cy5®) (ab95769)

**Please note:** All products are "FOR RESEARCH USE ONLY. NOT FOR USE IN DIAGNOSTIC PROCEDURES"

## Our Abpromise to you: Quality guaranteed and expert technical support

---

- Replacement or refund for products not performing as stated on the datasheet
- Valid for 12 months from date of delivery
- Response to your inquiry within 24 hours
  
- We provide support in Chinese, English, French, German, Japanese and Spanish
- Extensive multi-media technical resources to help you
- We investigate all quality concerns to ensure our products perform to the highest standards

If the product does not perform as described on this datasheet, we will offer a refund or replacement. For full details of the Abpromise, please visit <https://www.abcam.com/abpromise> or contact our technical team.

## Terms and conditions

---

- Guarantee only valid for products bought direct from Abcam or one of our authorized distributors