

## Product datasheet

# Anti-CD90 / Thy1 antibody [IBL-6/23] ab3105

★★★★★ 3 Abreviews 24 References 2 Images

### Overview

---

<b>Product name</b>	Anti-CD90 / Thy1 antibody [IBL-6/23]
<b>Description</b>	Rat monoclonal [IBL-6/23] to CD90 / Thy1
<b>Host species</b>	Rat
<b>Tested applications</b>	<b>Suitable for:</b> IHC-P, Flow Cyt, IHC-FoFr
<b>Species reactivity</b>	<b>Reacts with:</b> Mouse
<b>Immunogen</b>	Full length protein corresponding to CD90/ Thy1. Database link: <a href="#">P01831</a>
<b>Positive control</b>	Flow Cyt: mouse peripheral lymph node IHC-P: mouse spleen tissue
<b>General notes</b>	<p>The Life Science industry has been in the grips of a reproducibility crisis for a number of years. Abcam is leading the way in addressing this with our range of recombinant monoclonal antibodies and knockout edited cell lines for gold-standard validation. Please check that this product meets your needs before purchasing.</p> <p>If you have any questions, special requirements or concerns, please send us an inquiry and/or contact our Support team ahead of purchase. Recommended alternatives for this product can be found below, along with publications, customer reviews and Q&amp;As</p>

### Properties

---

<b>Form</b>	Liquid
<b>Storage instructions</b>	Shipped at 4°C. Store at +4°C short term (1-2 weeks). Store at -20°C or -80°C. Avoid freeze / thaw cycle.
<b>Storage buffer</b>	Preservative: 0.09% Sodium azide Constituent: 1% BSA
<b>Purity</b>	Protein G purified
<b>Clonality</b>	Monoclonal
<b>Clone number</b>	IBL-6/23
<b>Myeloma</b>	Sp2/0-Ag14
<b>Isotype</b>	IgG1
<b>Light chain type</b>	kappa

## Applications

**The Abpromise guarantee** Our [Abpromise guarantee](#) covers the use of ab3105 in the following tested applications.

The application notes include recommended starting dilutions; optimal dilutions/concentrations should be determined by the end user.

Application	Abreviews	Notes
IHC-P		Use at an assay dependent concentration. Perform heat mediated antigen retrieval with citrate buffer pH 6 before commencing with IHC staining protocol.
Flow Cyt	★★★★★ (1)	Use a concentration of 5 µg/ml.
IHC-FoFr		Use at an assay dependent concentration.

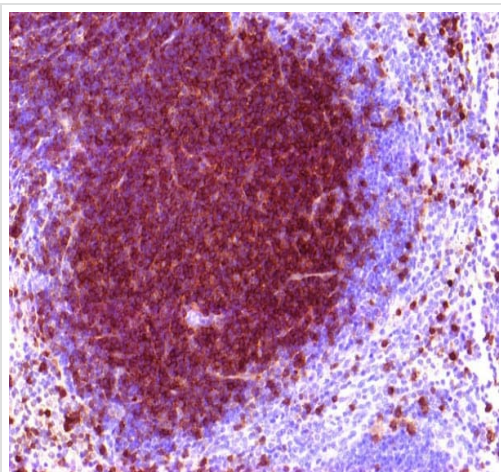
## Target

**Function** May play a role in cell-cell or cell-ligand interactions during synaptogenesis and other events in the brain.

**Sequence similarities** Contains 1 Ig-like V-type (immunoglobulin-like) domain.

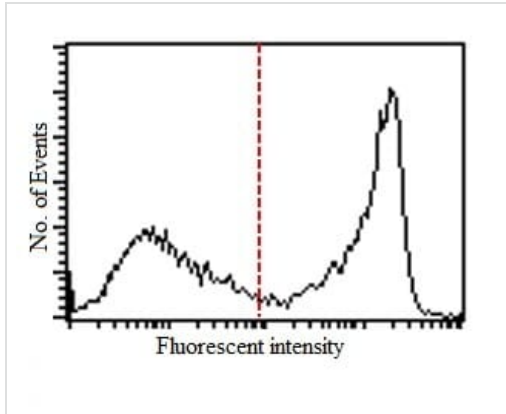
**Cellular localization** Cell membrane.

## Images



Immunohistochemistry (Formalin/PFA-fixed paraffin-embedded sections) analysis of mouse spleen tissue labelling CD90 / Thy1 with ab3105 at 1/100. Antigen retrieval was heat-mediated with citrate buffer pH 6.0.

Immunohistochemistry (Formalin/PFA-fixed paraffin-embedded sections) - Anti-CD90 / Thy1 antibody [IBL-6/23] (ab3105)



Flow Cytometry - Anti-CD90 / Thy1 antibody [IBL-6/23] (ab3105)

Flow cytometry analysis of mouse peripheral lymph node labeling CD90 / Thy1 with ab3105 at 5 ug/mL.

PE-conjugated anti-rat IgG.

Red line: isotype control labeling with <3% positive events.

**Please note:** All products are "FOR RESEARCH USE ONLY. NOT FOR USE IN DIAGNOSTIC PROCEDURES"

### Our Abpromise to you: Quality guaranteed and expert technical support

- Replacement or refund for products not performing as stated on the datasheet
- Valid for 12 months from date of delivery
- Response to your inquiry within 24 hours
- We provide support in Chinese, English, French, German, Japanese and Spanish
- Extensive multi-media technical resources to help you
- We investigate all quality concerns to ensure our products perform to the highest standards

If the product does not perform as described on this datasheet, we will offer a refund or replacement. For full details of the Abpromise, please visit <https://www.abcam.com/abpromise> or contact our technical team.

### Terms and conditions

- Guarantee only valid for products bought direct from Abcam or one of our authorized distributors