

Product datasheet

Anti-Cdc20 antibody [BA8] ab18217

4 References 1 Image

Overview

Product name	Anti-Cdc20 antibody [BA8]
Description	Mouse monoclonal [BA8] to Cdc20
Host species	Mouse
Tested applications	Suitable for: Flow Cyt
Species reactivity	Reacts with: Human
Immunogen	Synthetic C terminal peptide (Xenopus laevis). Run BLAST with ExPASy Run BLAST with NCBI

General notes

The Life Science industry has been in the grips of a reproducibility crisis for a number of years. Abcam is leading the way in addressing this with our range of recombinant monoclonal antibodies and knockout edited cell lines for gold-standard validation. Please check that this product meets your needs before purchasing.

If you have any questions, special requirements or concerns, please send us an inquiry and/or contact our Support team ahead of purchase. Recommended alternatives for this product can be found below, along with publications, customer reviews and Q&As

Properties

Form	Liquid
Storage instructions	Shipped at 4°C. Store at +4°C short term (1-2 weeks). Upon delivery aliquot. Store at -20°C or -80°C. Avoid freeze / thaw cycle.
Storage buffer	Constituent: PBS
Purity	Protein A/G purified
Clonality	Monoclonal
Clone number	BA8
Isotype	IgG2a

Applications

The Abpromise guarantee Our [Abpromise guarantee](#) covers the use of ab18217 in the following tested applications. The application notes include recommended starting dilutions; optimal dilutions/concentrations should be determined by the end user.

Application	Abreviews	Notes
Flow Cyt		Use 1µg for 10 ⁶ cells. ab170191 - Mouse monoclonal IgG2a, is suitable for use as an isotype control with this antibody.

Target

Function

Required for full ubiquitin ligase activity of the anaphase promoting complex/cyclosome (APC/C) and may confer substrate specificity upon the complex. Is regulated by MAD2L1. In metaphase the MAD2L1-CDC20-APC/C ternary complex is inactive and in anaphase the CDC20-APC/C binary complex is active in degrading substrates.

Pathway

Protein modification; protein ubiquitination.

Sequence similarities

Belongs to the WD repeat CDC20/Fizzy family.
Contains 7 WD repeats.

Developmental stage

Synthesis is initiated at G1/S, protein level peaks in M phase and protein is abruptly degraded at M/G1 transition.

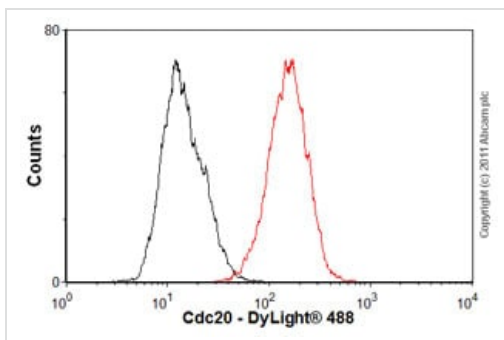
Post-translational modifications

Phosphorylated during mitosis, probably by maturation promoting factor (MPF). Phosphorylated by BUB1 at Ser-41; Ser-72; Ser-92; Ser-153; Thr-157 and Ser-161.

Ubiquitinated and degraded by the proteasome during spindle assembly checkpoint.

Deubiquitinated by USP44, leading to stabilize the MAD2L1-CDC20-APC/C ternary complex, thereby preventing premature activation of the APC/C.

Images



Flow Cytometry - Anti-Cdc20 antibody [BA8]
(ab18217)

Overlay histogram showing LoVo cells stained with ab18217 (red line). The cells were fixed with 80% methanol (5 min) and then permeabilized with 0.1% PBS-Tween for 20 min. The cells were then incubated in 1x PBS / 10% normal goat serum / 0.3M glycine to block non-specific protein-protein interactions followed by the antibody (ab18217, 1µg/1x10⁶ cells) for 30 min at 22°C. The secondary antibody used was DyLight® 488 goat anti-mouse IgG (H+L) ([ab96879](#)) at 1/500 dilution for 30 min at 22°C. Isotype control antibody (black line) was mouse IgG2a [ICIGG2A] ([ab91361](#), 1µg/1x10⁶ cells) used under the same conditions. Acquisition of >5,000 events was performed.

Please note: All products are "FOR RESEARCH USE ONLY. NOT FOR USE IN DIAGNOSTIC PROCEDURES"

Our Abpromise to you: Quality guaranteed and expert technical support

- Replacement or refund for products not performing as stated on the datasheet
- Valid for 12 months from date of delivery
- Response to your inquiry within 24 hours

- We provide support in Chinese, English, French, German, Japanese and Spanish
- Extensive multi-media technical resources to help you
- We investigate all quality concerns to ensure our products perform to the highest standards

If the product does not perform as described on this datasheet, we will offer a refund or replacement. For full details of the Abpromise, please visit <https://www.abcam.com/abpromise> or contact our technical team.

Terms and conditions

- Guarantee only valid for products bought direct from Abcam or one of our authorized distributors