

Product datasheet

Anti-Cdc20 antibody [CDC20/1102] ab215908

2 Images

Overview

Product name	Anti-Cdc20 antibody [CDC20/1102]
Description	Mouse monoclonal [CDC20/1102] to Cdc20
Host species	Mouse
Tested applications	Suitable for: IHC-P, ICC/IF, Flow Cyt
Species reactivity	Reacts with: Human

Predicted to work with: Mouse, Rat, Pig 

Immunogen Recombinant full length protein corresponding to Human Cdc20 aa 1-499.
Sequence:

```

MAQFAFESDL HLLQLDAPI PNAPPARWQR
KAKEAAGPAP SPMRAANRSH SAGRTPGRTP
GKSSSKVQTT PSKPGGDRIYI PHRSAAQMEV
ASFLLSKENQ PENSQTPTKK EHQKAWALNL
NGFDVEEAKI LRLSGKPQNA PEGYQNRLLKV
LYSQKATPGS SRKTCRYIPS LPDRILDAPE
IRNDYLNLV DWSSGNVLAV ALDNSVYLWS
ASSGDILQLL QMEQPGEYIS SVAWIKEGNY
LAVGTSSAEV QLWDVQQQKR LRNMTSHSAR
VGSLSWNSYI LSSGSRSGHI HHDVVRVAEH
HVATLSGHSQ EVCGLRWAPD GRHLASGGND
NLVNVWPSAP GEGGWVPLQT FTQHQGAVKA
VAWCPWQSNV LATGGGTSDR HIRWNVCSG
ACLSAVDAHS QVCSILWSPH YKELISGHGF
AQNQLVIWKY PTMAKVAELK GHTSRVLSLT
MSPDGATVAS AAADETLRLW RCFELDPARR
REREKASAAK SSLIHQGIR
    
```

Database link: [Q12834](#)

 [Run BLAST with](#)

 [Run BLAST with](#)

Positive control Human gastric carcinoma and Human tonsil tissues.

Properties

Form Liquid

Storage instructions	Shipped at 4°C. Store at +4°C short term (1-2 weeks). Upon delivery aliquot. Store at -20°C long term. Avoid freeze / thaw cycle.
Storage buffer	Preservative: 0.05% Sodium azide Constituents: 0.05% BSA, 99% PBS
Purity	Protein A/G purified
Purification notes	ab215908 is purified from Bioreactor Concentrate by Protein A/G.
Clonality	Monoclonal
Clone number	CDC20/1102
Isotype	IgG1
Light chain type	kappa

Applications

Our [Abpromise guarantee](#) covers the use of **ab215908** in the following tested applications.

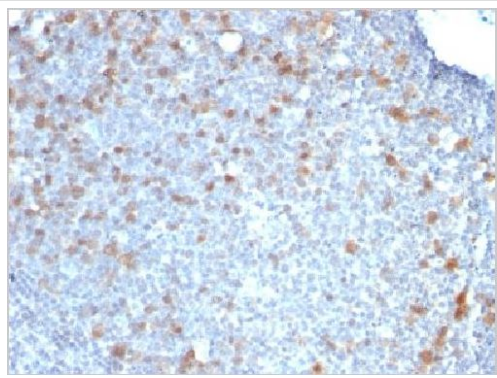
The application notes include recommended starting dilutions; optimal dilutions/concentrations should be determined by the end user.

Application	Abreviews	Notes
IHC-P		Use a concentration of 2 - 4 µg/ml. Perform heat mediated antigen retrieval with citrate buffer pH 6 before commencing with IHC staining protocol.
ICC/IF		Use a concentration of 0.5 - 1 µg/ml.
Flow Cyt		Use 0.5-1µg for 10 ⁶ cells.

Target

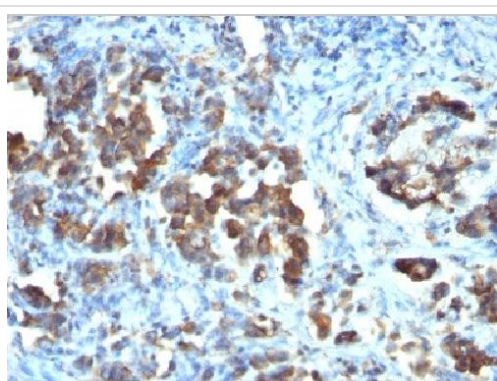
Function	Required for full ubiquitin ligase activity of the anaphase promoting complex/cyclosome (APC/C) and may confer substrate specificity upon the complex. Is regulated by MAD2L1. In metaphase the MAD2L1-CDC20-APC/C ternary complex is inactive and in anaphase the CDC20-APC/C binary complex is active in degrading substrates.
Pathway	Protein modification; protein ubiquitination.
Sequence similarities	Belongs to the WD repeat CDC20/Fizzy family. Contains 7 WD repeats.
Developmental stage	Synthesis is initiated at G1/S, protein level peaks in M phase and protein is abruptly degraded at M/G1 transition.
Post-translational modifications	Phosphorylated during mitosis, probably by maturation promoting factor (MPF). Phosphorylated by BUB1 at Ser-41; Ser-72; Ser-92; Ser-153; Thr-157 and Ser-161. Ubiquitinated and degraded by the proteasome during spindle assembly checkpoint. Deubiquitinated by USP44, leading to stabilize the MAD2L1-CDC20-APC/C ternary complex, thereby preventing premature activation of the APC/C.

Images



Immunohistochemistry (Formalin/PFA-fixed paraffin-embedded sections) - Anti-Cdc20 antibody
[CDC20/1102] (ab215908)

Immunohistochemical analysis of formalin-fixed and paraffin-embedded Human tonsil tissue labeling Cdc20 with ab215908 at 4 µg/ml dilution.



Immunohistochemistry (Formalin/PFA-fixed paraffin-embedded sections) - Anti-Cdc20 antibody
[CDC20/1102] (ab215908)

Immunohistochemical analysis of formalin-fixed and paraffin-embedded Human gastric carcinoma tissue labeling Cdc20 with ab215908 at 4 µg/ml dilution.

Please note: All products are "FOR RESEARCH USE ONLY. NOT FOR USE IN DIAGNOSTIC PROCEDURES"

Our Abpromise to you: Quality guaranteed and expert technical support

- Replacement or refund for products not performing as stated on the datasheet
- Valid for 12 months from date of delivery
- Response to your inquiry within 24 hours

- We provide support in Chinese, English, French, German, Japanese and Spanish
- Extensive multi-media technical resources to help you
- We investigate all quality concerns to ensure our products perform to the highest standards

If the product does not perform as described on this datasheet, we will offer a refund or replacement. For full details of the Abpromise, please visit <https://www.abcam.com/abpromise> or contact our technical team.

Terms and conditions

- Guarantee only valid for products bought direct from Abcam or one of our authorized distributors