

Product datasheet

Anti-CDC25 antibody ab272920

1 Image

Overview

Product name	Anti-CDC25 antibody
Description	Rabbit polyclonal to CDC25
Host species	Rabbit
Tested applications	Suitable for: WB
Species reactivity	Reacts with: Mouse, Rat
Immunogen	Synthetic peptide within Rat CDC25 (C terminal). The exact sequence is proprietary. Carrier-protein conjugated. Database link: P28818
Positive control	WB: Mouse and rat brain tissue extracts.
General notes	<p>The Life Science industry has been in the grips of a reproducibility crisis for a number of years. Abcam is leading the way in addressing this with our range of recombinant monoclonal antibodies and knockout edited cell lines for gold-standard validation. Please check that this product meets your needs before purchasing.</p> <p>If you have any questions, special requirements or concerns, please send us an inquiry and/or contact our Support team ahead of purchase. Recommended alternatives for this product can be found below, along with publications, customer reviews and Q&As</p>

Properties

Form	Liquid
Storage instructions	Shipped at 4°C. Store at +4°C short term (1-2 weeks). Upon delivery aliquot. Store at -20°C long term. Avoid freeze / thaw cycle.
Storage buffer	pH: 7.00 Preservative: 0.025% Proclin 300 Constituents: 79% PBS, 20% Glycerol (glycerin, glycerine)
Purity	Immunogen affinity purified
Clonality	Polyclonal
Isotype	IgG

Applications

The Abpromise guarantee

Our [Abpromise guarantee](#) covers the use of ab272920 in the following tested applications.

The application notes include recommended starting dilutions; optimal dilutions/concentrations should be determined by the end user.

Application	Abreviews	Notes
WB		1/500 - 1/3000.

Target

Function

Promotes the exchange of Ras-bound GDP by GTP.

Sequence similarities

Contains 1 DH (DBL-homology) domain.

Contains 1 IQ domain.

Contains 1 N-terminal Ras-GEF domain.

Contains 2 PH domains.

Contains 1 Ras-GEF domain.

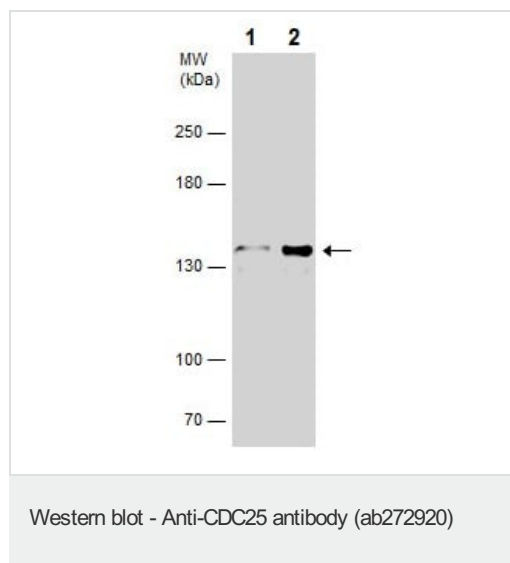
Domain

The DH (DBL-homology) domain mediates interaction with RASGRF2.

Post-translational modifications

Ubiquitinated.

Images



All lanes : Anti-CDC25 antibody (ab272920) at 1/1000 dilution

Lane 1 : Mouse brain tissue extract

Lane 2 : Rat brain tissue extract

Lysates/proteins at 30 µg per lane.

Secondary

All lanes : HRP-conjugated anti-rabbit IgG antibody

5% SDS-PAGE

Please note: All products are "FOR RESEARCH USE ONLY. NOT FOR USE IN DIAGNOSTIC PROCEDURES"

Our Abpromise to you: Quality guaranteed and expert technical support

- Replacement or refund for products not performing as stated on the datasheet
- Valid for 12 months from date of delivery
- Response to your inquiry within 24 hours
- We provide support in Chinese, English, French, German, Japanese and Spanish

- Extensive multi-media technical resources to help you
- We investigate all quality concerns to ensure our products perform to the highest standards

If the product does not perform as described on this datasheet, we will offer a refund or replacement. For full details of the Abpromise, please visit <https://www.abcam.com/abpromise> or contact our technical team.

Terms and conditions

- Guarantee only valid for products bought direct from Abcam or one of our authorized distributors