


## Product datasheet

# Anti-Cdc25C antibody ab226958

1 References 5 Images

### Overview

---

<b>Product name</b>	Anti-Cdc25C antibody
<b>Description</b>	Rabbit polyclonal to Cdc25C
<b>Host species</b>	Rabbit
<b>Tested applications</b>	<b>Suitable for:</b> WB, IHC-P, ICC/IF
<b>Species reactivity</b>	<b>Reacts with:</b> Mouse, Rat, Human <b>Predicted to work with:</b> Cow, Pig, Chimpanzee 
<b>Immunogen</b>	Recombinant fragment within Human Cdc25C (internal sequence). The exact sequence is proprietary. Database link: <a href="#">P30307</a>
<b>Positive control</b>	WB: RAW 264.7, Raji, PC-12, Rat2 and C2C12 whole cell extracts. IHC-P: Human SAS xenograft tissue. ICC/IF: U-2 OS cells.
<b>General notes</b>	<p>Reproducibility is key to advancing scientific discovery and accelerating scientists' next breakthrough.</p> <p>Abcam is leading the way with our range of recombinant antibodies, knockout-validated antibodies and knockout cell lines, all of which support improved reproducibility.</p> <p>We are also planning to innovate the way in which we present recommended applications and species on our product datasheets, so that only applications &amp; species that have been tested in our own labs, our suppliers or by selected trusted collaborators are covered by our Abpromise™ guarantee.</p> <p>In preparation for this, we have started to update the applications &amp; species that this product is Abpromise guaranteed for.</p> <p>We are also updating the applications &amp; species that this product has been “predicted to work with,” however this information is not covered by our Abpromise guarantee.</p> <p>Applications &amp; species from publications and Abreviews that have not been tested in our own labs or in those of our suppliers are not covered by the Abpromise guarantee.</p> <p>Please check that this product meets your needs before purchasing. If you have any questions, special requirements or concerns, please send us an inquiry and/or contact our Support team ahead of purchase. Recommended alternatives for this product can be found below, as well as customer reviews and Q&amp;As.</p>

### Properties

---

<b>Form</b>	Liquid
<b>Storage instructions</b>	Shipped at 4°C. Store at +4°C short term (1-2 weeks). Upon delivery aliquot. Store at -20°C long term. Avoid freeze / thaw cycle.
<b>Storage buffer</b>	pH: 7.00 Preservative: 0.01% Thimerosal (merthiolate) Constituents: 1.21% Tris, 0.75% Glycine, 20% Glycerol (glycerin, glycerine)
<b>Purity</b>	Immunogen affinity purified
<b>Clonality</b>	Polyclonal
<b>Isotype</b>	IgG

## Applications

Our [Abpromise guarantee](#) covers the use of **ab226958** in the following tested applications.

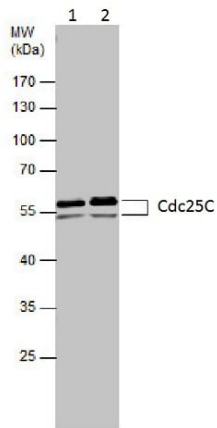
The application notes include recommended starting dilutions; optimal dilutions/concentrations should be determined by the end user.

Application	Abreviews	Notes
WB		1/500 - 1/3000.
IHC-P		1/100 - 1/1000.
ICC/IF		1/100 - 1/1000.

## Target

<b>Function</b>	Functions as a dosage-dependent inducer in mitotic control. It is a tyrosine protein phosphatase required for progression of the cell cycle. It directly dephosphorylates CDK1 and activate its kinase activity.
<b>Sequence similarities</b>	Belongs to the MPI phosphatase family. Contains 1 rhodanese domain.
<b>Developmental stage</b>	Expressed predominantly in G2 phase.
<b>Post-translational modifications</b>	Phosphorylated by CHK1 on Ser-216. This phosphorylation creates a binding site for 14-3-3 protein and inhibits the phosphatase. Phosphorylated by PLK4.
<b>Cellular localization</b>	Nucleus.

## Images



Western blot - Anti-Cdc25C antibody (ab226958)

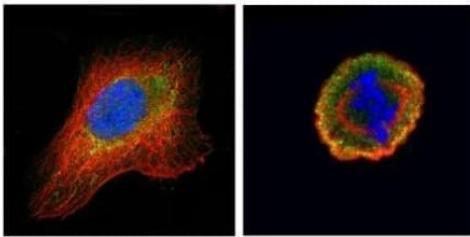
**All lanes** : Anti-Cdc25C antibody (ab226958) at 1/500 dilution

**Lane 1** : PC-12 (rat adrenal gland pheochromocytoma cell line) whole cell extract

**Lane 2** : Rat2 (rat fibroblast cell line) whole cell extract

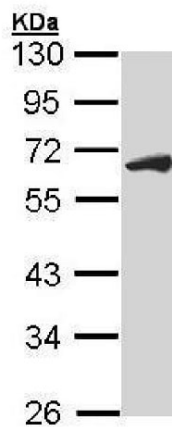
Lysates/proteins at 30 µg per lane.

10% SDS-PAGE gel.



Immunocytochemistry/ Immunofluorescence - Anti-Cdc25C antibody (ab226958)

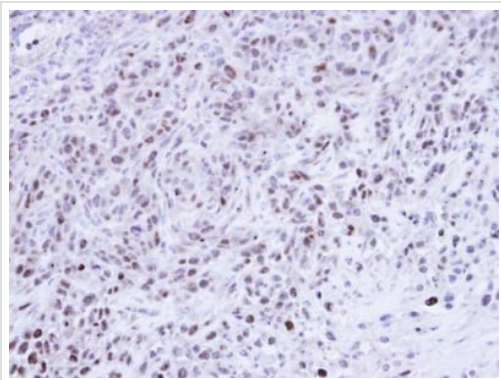
PFA-fixed U-2 OS (human bone osteosarcoma epithelial cell line) cells stained for Cd25C (green) using ab226958 at 1/500 dilution in ICC/IF. Counterstain: alpha-tubulin filaments were labeled with an anti-alpha Tubulin antibody (red) at 1/2000 dilution.



Western blot - Anti-Cdc25C antibody (ab226958)

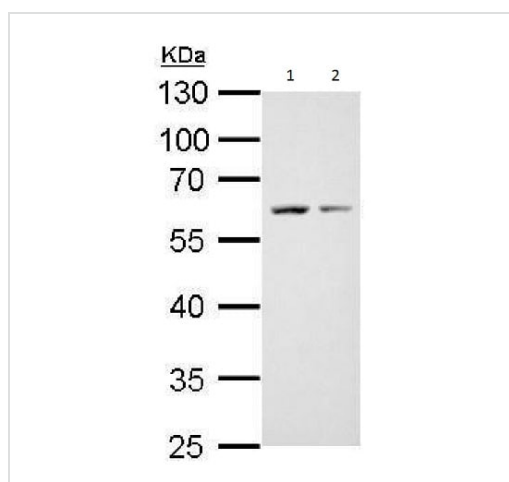
Anti-Cdc25C antibody (ab226958) at 1/1000 dilution + Raji (human Burkitt's lymphoma cell line) whole cell lysate at 30 µg

10% SDS-PAGE gel.



Immunohistochemistry (Formalin/PFA-fixed paraffin-embedded sections) - Anti-Cdc25C antibody (ab226958)

Paraffin-embedded human SAS xenograft tissue stained for Cdc25C using ab226958 at 1/500 dilution in immunohistochemical analysis.



Western blot - Anti-Cdc25C antibody (ab226958)

**All lanes** : Anti-Cdc25C antibody (ab226958) at 1/1000 dilution

**Lane 1** : RAW 264.7 (mouse macrophage cell line transformed with Abelson murine leukemia virus) whole cell lysate

**Lane 2** : C2C12 (mouse myoblast cell line) whole cell lysate

Lysates/proteins at 30 µg per lane.

10% SDS-PAGE gel.

**Please note:** All products are "FOR RESEARCH USE ONLY. NOT FOR USE IN DIAGNOSTIC PROCEDURES"

### Our Abpromise to you: Quality guaranteed and expert technical support

- Replacement or refund for products not performing as stated on the datasheet
- Valid for 12 months from date of delivery
- Response to your inquiry within 24 hours
- We provide support in Chinese, English, French, German, Japanese and Spanish
- Extensive multi-media technical resources to help you
- We investigate all quality concerns to ensure our products perform to the highest standards

If the product does not perform as described on this datasheet, we will offer a refund or replacement. For full details of the Abpromise, please visit <https://www.abcam.com/abpromise> or contact our technical team.

### Terms and conditions

- Guarantee only valid for products bought direct from Abcam or one of our authorized distributors