


Product datasheet

Anti-Cdc37 antibody ab115166

★★★★★ 1 Abreviews 2 Images

Overview

Product name	Anti-Cdc37 antibody
Description	Rabbit polyclonal to Cdc37
Host species	Rabbit
Tested applications	Suitable for: WB, IP
Species reactivity	Reacts with: Mouse, Human Predicted to work with: Rat, Rabbit, Horse, Chicken, Guinea pig, Cow, Dog, Pig, Xenopus laevis, Chimpanzee, Rhesus monkey, Gorilla, Orangutan, Xenopus tropicalis 
Immunogen	Synthetic peptide within Human Cdc37 aa 1-50. The exact sequence is proprietary. Database link: Q16543
Positive control	Hela, 293T and mpuse NIH3T3 cell lysates.

Properties

Form	Liquid
Storage instructions	Shipped at 4°C. Upon delivery aliquot and store at -20°C. Avoid freeze / thaw cycles.
Storage buffer	Preservative: 0.09% Sodium azide Constituent: 99% Tris citrate/phosphate pH 7 to 8.
Purity	Immunogen affinity purified
Clonality	Polyclonal
Isotype	IgG

Applications

Our [Abpromise guarantee](#) covers the use of **ab115166** in the following tested applications.

The application notes include recommended starting dilutions; optimal dilutions/concentrations should be determined by the end user.

Application	Abreviews	Notes
WB		1/1000 - 1/5000. Predicted molecular weight: 44 kDa.

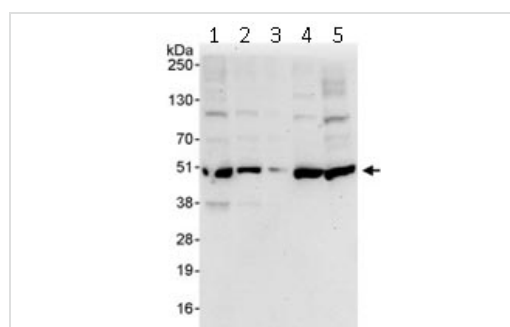
Application	Abreviews	Notes
-------------	-----------	-------

IP Use at 2-5 µg/mg of lysate.

Target

Function	Co-chaperone that binds to numerous kinases and promotes their interaction with the Hsp90 complex, resulting in stabilization and promotion of their activity.
Sequence similarities	Belongs to the CDC37 family.
Post-translational modifications	Constitutively sumoylated by UBE2I.
Cellular localization	Cytoplasm.

Images



Western blot - Anti-Cdc37 antibody (ab115166)

All lanes : Anti-Cdc37 antibody (ab115166) at 0.4 µg/ml

Lane 1 : HeLa cell lysate at 50 µg

Lane 2 : HeLa cell lysate at 15 µg

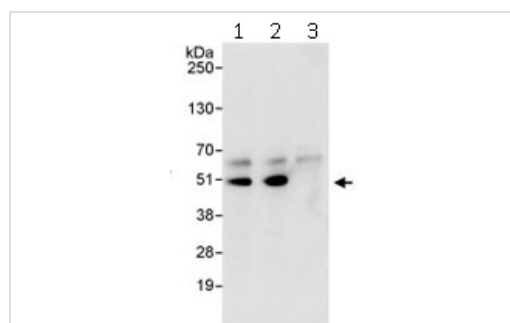
Lane 3 : HeLa cell lysate at 5 µg

Lane 4 : 293T cell lysate at 50 µg

Lane 5 : Mouse NIH3T3 cell lysate at 50 µg

Predicted band size: 44 kDa

Exposure time: 30 seconds



Immunoprecipitation - Anti-Cdc37 antibody (ab115166)

Immunoprecipitation of Cdc37 (3 µg of antibody per mg of HeLa cell lysate; 20% of the IP loaded). Lane 1- Immunoprecipitation with anti-Cdc37 antibody (ab115166); Lane 2-Immunoprecipitation with an anti-Cdc37 antibody that recognizes a downstream epitope ; Lane 3- Immunoprecipitation with IgG control. Anti-Cdc37 antibody (ab115166) used at 1 µg/ml for western blot. Detection: Chemiluminescence with exposure time of 10 sec.

Our Abpromise to you: Quality guaranteed and expert technical support

- Replacement or refund for products not performing as stated on the datasheet
- Valid for 12 months from date of delivery
- Response to your inquiry within 24 hours

- We provide support in Chinese, English, French, German, Japanese and Spanish
- Extensive multi-media technical resources to help you
- We investigate all quality concerns to ensure our products perform to the highest standards

If the product does not perform as described on this datasheet, we will offer a refund or replacement. For full details of the Abpromise, please visit <https://www.abcam.com/abpromise> or contact our technical team.

Terms and conditions

- Guarantee only valid for products bought direct from Abcam or one of our authorized distributors