

Product datasheet

Anti-CDK1 + CDK2 + CDK3 + CDK5 antibody [E53] ab32030

Recombinant RabMAb

★★★★★ 1 Abreviews 1 References 3 Images

Overview

Product name	Anti-CDK1 + CDK2 + CDK3 + CDK5 antibody [E53]
Description	Rabbit monoclonal [E53] to CDK1 + CDK2 + CDK3 + CDK5
Host species	Rabbit
Tested applications	Suitable for: WB, IP Unsuitable for: Flow Cyt or IHC
Species reactivity	Reacts with: Human
Immunogen	Synthetic peptide aa 1-100.
Positive control	WB: Hela cell lysate.
General notes	Mouse, Rat: We have preliminary internal testing data to indicate this antibody may not react with these species. Please contact us for more information.

This product is a recombinant monoclonal antibody, which offers several advantages including:

- High batch-to-batch consistency and reproducibility
- Improved sensitivity and specificity
- Long-term security of supply
- Animal-free production

For more information [see here](#).

Our RabMAb[®] technology is a patented hybridoma-based technology for making rabbit monoclonal antibodies. For details on our patents, please refer to [RabMAb[®] patents](#).

Properties

Form	Liquid
Storage instructions	Shipped at 4°C. Upon delivery aliquot and store at -20°C. Avoid freeze / thaw cycles.
Storage buffer	pH: 7.20 Preservative: 0.01% Sodium azide Constituents: 49% PBS, 50% Glycerol, 0.05% BSA
Purity	Whole Cell Lysate

Clonality	Monoclonal
Clone number	E53
Isotype	IgG

Applications

Our [Abpromise guarantee](#) covers the use of **ab32030** in the following tested applications.

The application notes include recommended starting dilutions; optimal dilutions/concentrations should be determined by the end user.

Application	Abreviews	Notes
WB		1/2000 - 1/10000. Detects a band of approximately 35 kDa (predicted molecular weight: 34 kDa).
IP		1/40.

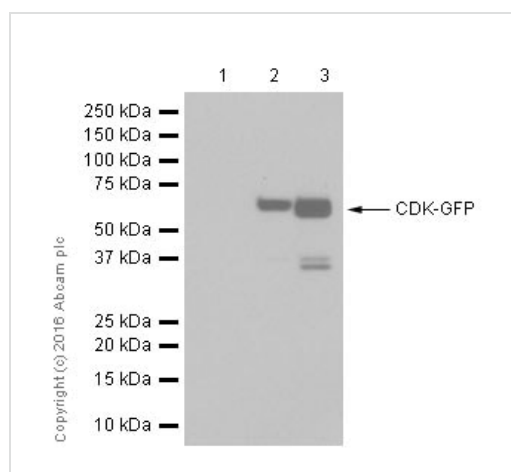
Application notes Is unsuitable for Flow Cyt or IHC.

Target

Cellular localization CDK1: Nucleus. CDK5: Cytoplasm. Cell projection > lamellipodium. Cell projection > growth cone. In axonal growth cone with extension to the peripheral lamellipodia.

Form CDK1: CDK1 can be located to the Nucleus, cytoplasm and Mitochondria. It's cytoplasmic during interphase and reversibly translocated from cytoplasm to the nucleus when phosphorylated before G2-M transition when associated with cyclin-B1. Accumulates in mitochondria in G2-arrested cells upon DNA-damage.

Images



Western blot - Anti-CDK1 + CDK2 + CDK3 + CDK5 antibody [E53] (ab32030)

All lanes : Anti-CDK1 + CDK2 + CDK3 + CDK5 antibody [E53] (ab32030) at 1/10000 dilution

Lane 1 : Empty vector transfected 293T (human embryonic kidney) whole cell lysates

Lane 2 : CDK2-GFP transfected 293T (human embryonic kidney) whole cell lysates

Lane 3 : CDK3-GFP transfected 293T (human embryonic kidney) whole cell lysates

Lysates/proteins at 15 µg per lane.

Secondary

All lanes : Goat Anti-Rabbit IgG H&L (HRP) ([ab97051](#)) at 1/20000 dilution

Predicted band size: 34 kDa

Observed band size: 62 kDa

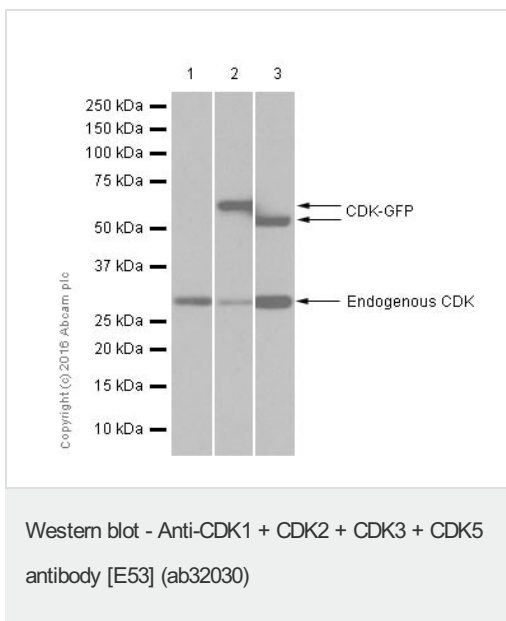
[why is the actual band size different from the predicted?](#)

Exposure time: 1 second

Blocking/Diluting buffer 5% NFD/MTBST

The endogenous CDK is detected at higher exposure.

We are not sure the bands around 35kDa. Perhaps they are degradation products.



All lanes : Anti-CDK1 + CDK2 + CDK3 + CDK5 antibody [E53] (ab32030) at 1/2000 dilution

Lane 1 : Empty vector transfected 293T (human embryonic kidney) whole cell lysates

Lane 2 : CDK1-GFP transfected 293T (human embryonic kidney) whole cell lysates

Lane 3 : CDK5-GFP transfected 293T (human embryonic kidney) whole cell lysates

Lysates/proteins at 15 μ g per lane.

Secondary

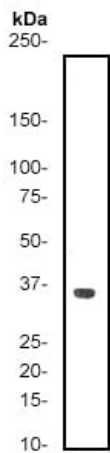
All lanes : Goat Anti-Rabbit IgG H&L (HRP) (ab97051) at 1/20000 dilution

Predicted band size: 34 kDa

Exposure time: 15 seconds

Blocking/Diluting buffer 5% NFD/MTBST

34kDa band represents endogenous CDK, and 62kDa represents CDK-GFP.



Western blot - Anti-CDK1 + CDK2 + CDK3 + CDK5 antibody [E53] (ab32030)

Anti-CDK1 + CDK2 + CDK3 + CDK5 antibody [E53] (ab32030) at 1/5000 dilution + Hela cell lysate

Predicted band size: 34 kDa

Observed band size: 35 kDa [why is the actual band size different from the predicted?](#)

Please note: All products are "FOR RESEARCH USE ONLY. NOT FOR USE IN DIAGNOSTIC PROCEDURES"

Our Abpromise to you: Quality guaranteed and expert technical support

- Replacement or refund for products not performing as stated on the datasheet
- Valid for 12 months from date of delivery
- Response to your inquiry within 24 hours
- We provide support in Chinese, English, French, German, Japanese and Spanish
- Extensive multi-media technical resources to help you
- We investigate all quality concerns to ensure our products perform to the highest standards

If the product does not perform as described on this datasheet, we will offer a refund or replacement. For full details of the Abpromise, please visit <https://www.abcam.com/abpromise> or contact our technical team.

Terms and conditions

- Guarantee only valid for products bought direct from Abcam or one of our authorized distributors