

## Product datasheet

# Anti-CDK1 antibody ab131450

★★★★★ 3 Abreviews 3 References 3 Images

### Overview

---

<b>Product name</b>	Anti-CDK1 antibody
<b>Description</b>	Rabbit polyclonal to CDK1
<b>Host species</b>	Rabbit
<b>Specificity</b>	ab131450 detects endogenous levels of total CDK1 protein.
<b>Tested applications</b>	<b>Suitable for:</b> WB, IHC-P, ICC/IF
<b>Species reactivity</b>	<b>Reacts with:</b> Mouse, Rat, Human
<b>Immunogen</b>	Synthetic peptide, conjugated to KLH, surrounding amino acids 13-17 (G-T-Y-G-V) of Human CDK1 (NP_001163877.1).
<b>Positive control</b>	Methanol fixed HeLa cells; HeLa and MCF cell extracts; Human breast carcinoma tissue.

### Properties

---

<b>Form</b>	Liquid
<b>Storage instructions</b>	Shipped at 4°C. Store at -20°C. Stable for 12 months at -20°C.
<b>Storage buffer</b>	pH: 7.40 Preservative: 0.02% Sodium azide Constituents: 49% PBS, 50% Glycerol, 0.88% Sodium chloride Note: PBS without Mg <sup>2+</sup> and Ca <sup>2+</sup>
<b>Purity</b>	Immunogen affinity purified
<b>Purification notes</b>	ab131450 was purified by affinity chromatography using epitope specific peptide.
<b>Clonality</b>	Polyclonal
<b>Isotype</b>	IgG

### Applications

---

Our [Abpromise guarantee](#) covers the use of **ab131450** in the following tested applications.

The application notes include recommended starting dilutions; optimal dilutions/concentrations should be determined by the end user.

Application	Abreviews	Notes
WB	★★★★★	1/500 - 1/1000. Predicted molecular weight: 34 kDa.
IHC-P		1/50 - 1/100.
ICC/IF	★★★★☆	1/100 - 1/200.

## Target

**Function** Plays a key role in the control of the eukaryotic cell cycle. It is required in higher cells for entry into S-phase and mitosis. p34 is a component of the kinase complex that phosphorylates the repetitive C-terminus of RNA polymerase II.

**Tissue specificity** Isoform 2 is found in breast cancer tissues.

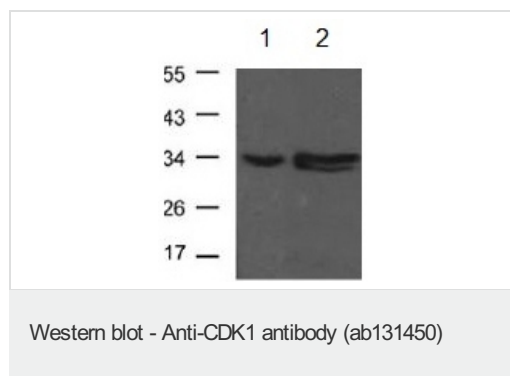
**Sequence similarities** Belongs to the protein kinase superfamily. CMGC Ser/Thr protein kinase family. CDC2/CDKX subfamily.

Contains 1 protein kinase domain.

**Cellular localization** Nucleus.

**Form** CDK1 can be located to the Nucleus, cytoplasm and Mitochondria. It's cytoplasmic during interphase and reversibly translocated from cytoplasm to the nucleus when phosphorylated before G2-M transition when associated with cyclin-B1. Accumulates in mitochondria in G2-arrested cells upon DNA-damage.

## Images

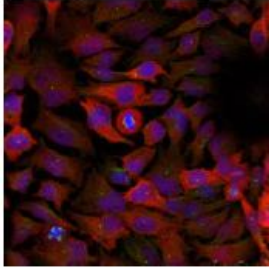


**All lanes :** Anti-CDK1 antibody (ab131450) at 1/500 dilution

**Lane 1 :** HeLa cell extracts

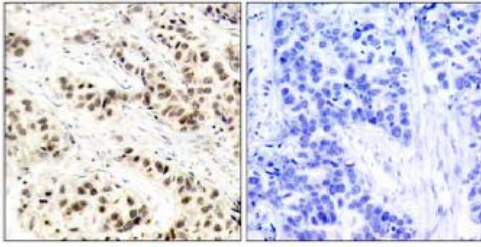
**Lane 2 :** MCF cell extracts

**Predicted band size:** 34 kDa



Immunofluorescent analysis of methanol fixed HeLa cells labelling CDK1 with ab131450 antibody at a dilution of 1/100.

Immunocytochemistry/ Immunofluorescence - Anti-CDK1 antibody (ab131450)



Immunohistochemical analysis of paraffin embedded Human breast carcinoma tissue labelling CDK1 with ab131450 at 1/50 dilution. The image on the right is treated with the synthesized peptide.

Immunohistochemistry (Formalin/PFA-fixed paraffin-embedded sections) - Anti-CDK1 antibody (ab131450)

**Please note:** All products are "FOR RESEARCH USE ONLY. NOT FOR USE IN DIAGNOSTIC PROCEDURES"

### Our Abpromise to you: Quality guaranteed and expert technical support

---

- Replacement or refund for products not performing as stated on the datasheet
- Valid for 12 months from date of delivery
- Response to your inquiry within 24 hours
- We provide support in Chinese, English, French, German, Japanese and Spanish
- Extensive multi-media technical resources to help you
- We investigate all quality concerns to ensure our products perform to the highest standards

If the product does not perform as described on this datasheet, we will offer a refund or replacement. For full details of the Abpromise, please visit <https://www.abcam.com/abpromise> or contact our technical team.

### Terms and conditions

---

- Guarantee only valid for products bought direct from Abcam or one of our authorized distributors