


Product datasheet

Anti-CDK1 antibody - N-terminal ab226969

6 Images

Overview

Product name	Anti-CDK1 antibody - N-terminal
Description	Rabbit polyclonal to CDK1 - N-terminal
Host species	Rabbit
Tested applications	Suitable for: WB, IHC-P, ICC/IF
Species reactivity	Reacts with: Mouse, Rat, Human Predicted to work with: Sheep, Chicken, Cow, Pig, Chimpanzee, Rhesus monkey 
Immunogen	Synthetic peptide within Human CDK1 (N terminal). The exact sequence is proprietary. Conjugated to a protein carrier. Database link: P06493
Positive control	IHC-P: Human breast carcinoma tissue. WB: A549, H1299, NIH/3T3, JC, BCL-1, PC-12, HEK-293T, A431. HeLa, HepG2 and HCT 116 whole cell lysate. ICC/IF: MCF7 cells.

Properties

Form	Liquid
Storage instructions	Shipped at 4°C. Store at +4°C short term (1-2 weeks). Upon delivery aliquot. Store at -20°C long term. Avoid freeze / thaw cycle.
Storage buffer	pH: 7.00 Preservative: 0.01% Thimerosal (merthiolate) Constituents: 1.21% Tris, 0.75% Glycine, 20% Glycerol
Purity	Immunogen affinity purified
Clonality	Polyclonal
Isotype	IgG

Applications

Our [Abpromise guarantee](#) covers the use of **ab226969** in the following tested applications.

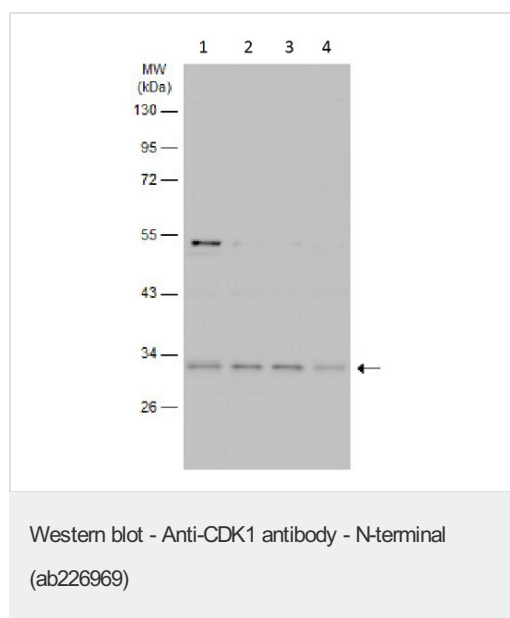
The application notes include recommended starting dilutions; optimal dilutions/concentrations should be determined by the end user.

Application	Abreviews	Notes
WB		1/500 - 1/10000. Predicted molecular weight: 34 kDa.
IHC-P		1/100 - 1/1000.
ICC/IF		1/100 - 1/1000.

Target

Function	Plays a key role in the control of the eukaryotic cell cycle. It is required in higher cells for entry into S-phase and mitosis. p34 is a component of the kinase complex that phosphorylates the repetitive C-terminus of RNA polymerase II.
Tissue specificity	Isoform 2 is found in breast cancer tissues.
Sequence similarities	Belongs to the protein kinase superfamily. CMGC Ser/Thr protein kinase family. CDC2/CDKX subfamily. Contains 1 protein kinase domain.
Cellular localization	Nucleus.
Form	CDK1 can be located to the Nucleus, cytoplasm and Mitochondria. It's cytoplasmic during interphase and reversibly translocated from cytoplasm to the nucleus when phosphorylated before G2-M transition when associated with cyclin-B1. Accumulates in mitochondria in G2-arrested cells upon DNA-damage.

Images



All lanes : Anti-CDK1 antibody - N-terminal (ab226969) at 1/1000 dilution

Lane 1 : HEK-293T (human epithelial cell line from embryonic kidney transformed with large T antigen) whole cell extracts

Lane 2 : A431 (human epidermoid carcinoma cell line) whole cell extracts

Lane 3 : HeLa (human epithelial cell line from cervix adenocarcinoma) whole cell extracts

Lane 4 : HepG2 (human liver hepatocellular carcinoma cell line) whole cell extracts

Lysates/proteins at 30 µg per lane.

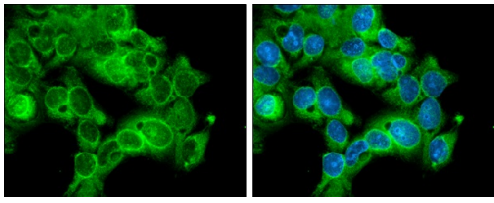
Secondary

All lanes : HRP-conjugated anti-rabbit IgG

Developed using the ECL technique.

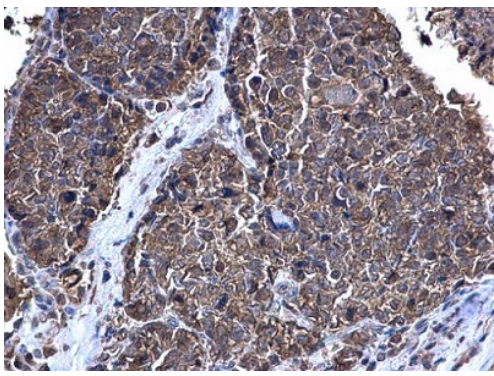
Predicted band size: 34 kDa

10% SDS-PAGE



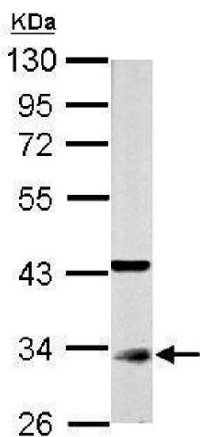
Immunocytochemistry/ Immunofluorescence - Anti-CDK1 antibody - N-terminal (ab226969)

MCF7 (human breast adenocarcinoma cell line) cells stained for CDK1 (green) using ab226969 (1/750 dilution) in ICC/IF. MCF7 cells were fixed in ice-cold methanol for 5 minutes. Counterstain: Hoechst 33342 (blue).



Immunohistochemistry (Formalin/PFA-fixed paraffin-embedded sections) - Anti-CDK1 antibody - N-terminal (ab226969)

Paraffin embedded human breast carcinoma tissue stained for CDK1 with ab226969 (1/500 dilution) in immunohistochemical analysis.



Western blot - Anti-CDK1 antibody - N-terminal (ab226969)

Anti-CDK1 antibody - N-terminal (ab226969) at 1/5000 dilution + PC-12 (rat adrenal gland pheochromocytoma cell line) whole cell lysate at 30 μ g

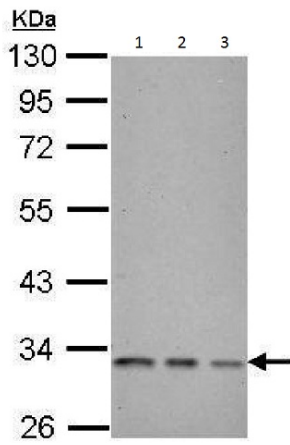
Secondary

HRP-conjugated anti-rabbit IgG

Developed using the ECL technique.

Predicted band size: 34 kDa

10% SDS PAGE



Western blot - Anti-CDK1 antibody - N-terminal (ab226969)

All lanes : Anti-CDK1 antibody - N-terminal (ab226969) at 1/3000 dilution

Lane 1 : NIH/3T3 (mouse embryo fibroblast cell line) whole cell lysate

Lane 2 : JC whole cell lysate

Lane 3 : BCL-1 whole cell lysate

Lysates/proteins at 30 µg per lane.

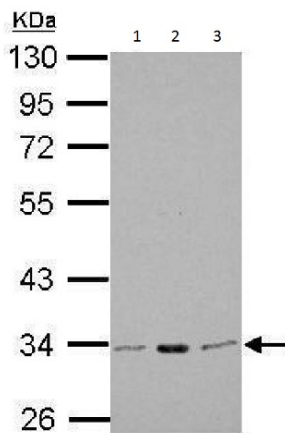
Secondary

All lanes : HRP-conjugated anti-rabbit IgG

Developed using the ECL technique.

Predicted band size: 34 kDa

10% SDS PAGE



Western blot - Anti-CDK1 antibody - N-terminal (ab226969)

All lanes : Anti-CDK1 antibody - N-terminal (ab226969) at 1/5000 dilution

Lane 1 : A549 (human lung carcinoma cell line) whole cell lysate

Lane 2 : H1299 (human non-small cell lung carcinoma cell line) whole cell lysate

Lane 3 : HCT 116 (human colorectal carcinoma cell line) whole cell lysate

Lysates/proteins at 30 µg per lane.

Secondary

All lanes : HRP-conjugated anti-rabbit IgG

Developed using the ECL technique.

Predicted band size: 34 kDa

10% SDS PAGE

Please note: All products are "FOR RESEARCH USE ONLY. NOT FOR USE IN DIAGNOSTIC PROCEDURES"

Our Abpromise to you: Quality guaranteed and expert technical support

- Replacement or refund for products not performing as stated on the datasheet
- Valid for 12 months from date of delivery
- Response to your inquiry within 24 hours

- We provide support in Chinese, English, French, German, Japanese and Spanish
- Extensive multi-media technical resources to help you
- We investigate all quality concerns to ensure our products perform to the highest standards

If the product does not perform as described on this datasheet, we will offer a refund or replacement. For full details of the Abpromise, please visit <https://www.abcam.com/abpromise> or contact our technical team.

Terms and conditions

- Guarantee only valid for products bought direct from Abcam or one of our authorized distributors