




## Product datasheet

# Anti-Cdk2 antibody ab232753

6 Images

### Overview

<b>Product name</b>	Anti-Cdk2 antibody
<b>Description</b>	Rabbit polyclonal to Cdk2
<b>Host species</b>	Rabbit
<b>Tested applications</b>	<b>Suitable for:</b> WB, IHC-P
<b>Species reactivity</b>	<p><b>Reacts with:</b> Human, Pig</p> <p><b>Predicted to work with:</b> Mouse, Rat, Cow, Chinese hamster </p>
<b>Immunogen</b>	<p>Recombinant fragment (His-tag) corresponding to Human Cdk2 aa 94-198. Expressed in E.coli. N-terminal tag.</p> <p>Sequence:</p> <p>SALTGIPLPLIKSYLFQLLQGLAFCHSHRVLHRDLKPNLLI NTEGAIKL ADFGLARAFGVPVRTYTHEVVTLWYRAPEILLGCKYYSTA VDIWSLGCIF AEMVT</p> <p>Database link: <a href="#">P24941</a></p> <p style="text-align: right;">  <a href="#">Run BLAST with</a>                 <a href="#">Run BLAST with</a> </p>
<b>Positive control</b>	IHC-P: Human liver, liver cancer, breast cancer and colorectal cancer tissues. WB: HeLa, HepG2 and K562 cell lysates; Pig liver lysate; Recombinant human Cdk2 protein.
<b>General notes</b>	<p>Reproducibility is key to advancing scientific discovery and accelerating scientists' next breakthrough.</p> <p>Abcam is leading the way with our range of recombinant antibodies, knockout-validated antibodies and knockout cell lines, all of which support improved reproducibility.</p> <p>We are also planning to innovate the way in which we present recommended applications and species on our product datasheets, so that only applications &amp; species that have been tested in our own labs, our suppliers or by selected trusted collaborators are covered by our Abpromise™ guarantee.</p> <p>In preparation for this, we have started to update the applications &amp; species that this product is Abpromise guaranteed for.</p> <p>We are also updating the applications &amp; species that this product has been “predicted to work with,” however this information is not covered by our Abpromise guarantee.</p> <p>Applications &amp; species from publications and Abreviews that have not been tested in our own labs or in those of our suppliers are not covered by the Abpromise guarantee.</p>

Please check that this product meets your needs before purchasing. If you have any questions, special requirements or concerns, please send us an inquiry and/or contact our Support team ahead of purchase. Recommended alternatives for this product can be found below, as well as customer reviews and Q&As.

## Properties

---

<b>Form</b>	Liquid
<b>Storage instructions</b>	Shipped at 4°C. Store at +4°C short term (1-2 weeks). Upon delivery aliquot. Store at -20°C long term. Avoid freeze / thaw cycle.
<b>Storage buffer</b>	pH: 7.40 Preservative: 0.02% Sodium azide Constituents: PBS, 50% Glycerol
<b>Purity</b>	Immunogen affinity purified
<b>Purification notes</b>	ab232753 was purified by antigen-specific affinity chromatography followed by Protein A affinity chromatography.
<b>Clonality</b>	Polyclonal
<b>Isotype</b>	IgG

## Applications

---

Our [Abpromise guarantee](#) covers the use of **ab232753** in the following tested applications.

The application notes include recommended starting dilutions; optimal dilutions/concentrations should be determined by the end user.

Application	Abreviews	Notes
WB		Use a concentration of 0.5 - 2 µg/ml. Predicted molecular weight: 34 kDa.
IHC-P		Use a concentration of 5 - 20 µg/ml.

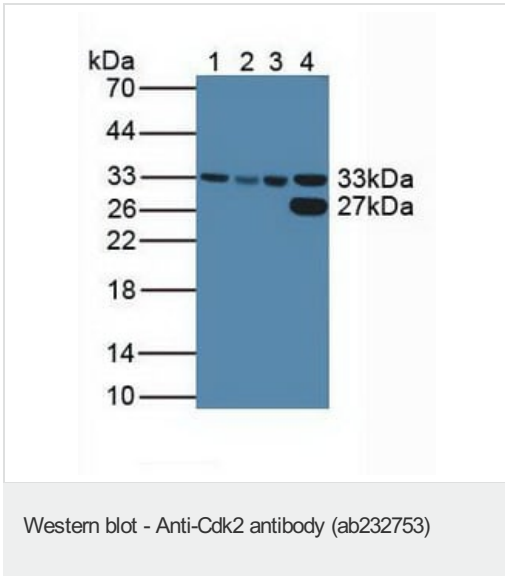
## Target

---

<b>Function</b>	Involved in the control of the cell cycle. Interacts with cyclins A, B1, B3, D, or E. Activity of CDK2 is maximal during S phase and G2.
<b>Sequence similarities</b>	Belongs to the protein kinase superfamily. CMGC Ser/Thr protein kinase family. CDC2/CDKX subfamily. Contains 1 protein kinase domain.

## Images

---



**All lanes :** Anti-Cdk2 antibody (ab232753) at 2 µg/ml

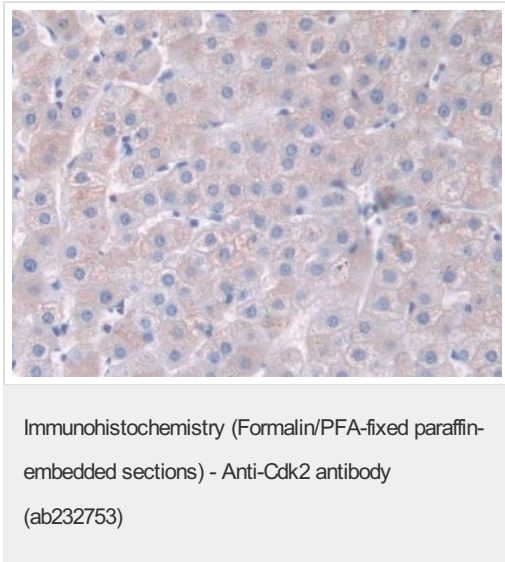
**Lane 1 :** HeLa (human epithelial cell line from cervix adenocarcinoma) cell lysate

**Lane 2 :** HepG2 (human liver hepatocellular carcinoma cell line) cell lysate

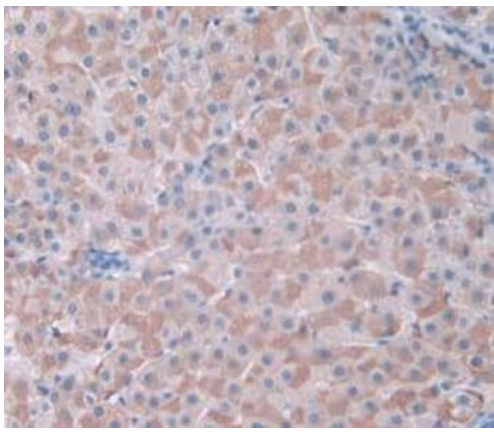
**Lane 3 :** K562 (human chronic myelogenous leukemia cell line from bone marrow) cell lysate

**Lane 4 :** Pig liver lysate

**Predicted band size:** 34 kDa

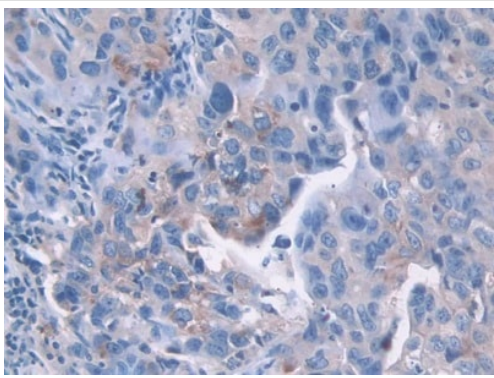


Paraffin-embedded human liver tissue stained for Cdk2 using ab232753 at 20 µg/ml in immunohistochemical analysis. DAB staining.



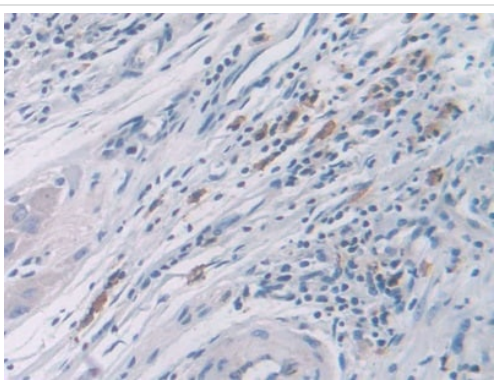
Immunohistochemistry (Formalin/PFA-fixed paraffin-embedded sections) - Anti-Cdk2 antibody (ab232753)

Paraffin-embedded human liver cancer tissue stained for Cdk2 using ab232753 at 20  $\mu\text{g/ml}$  in immunohistochemical analysis. DAB staining.



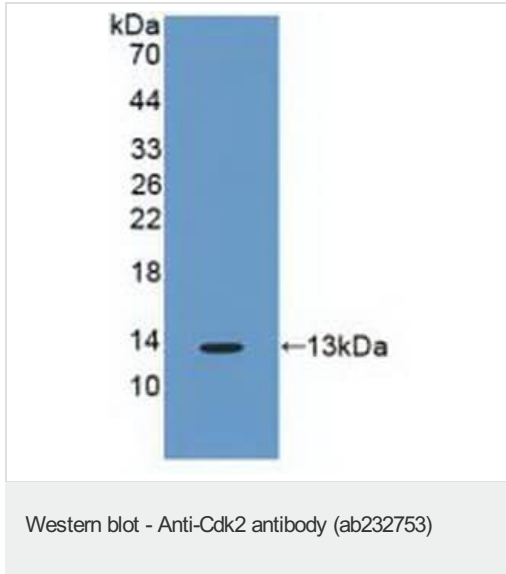
Immunohistochemistry (Formalin/PFA-fixed paraffin-embedded sections) - Anti-Cdk2 antibody (ab232753)

Paraffin-embedded human breast cancer tissue stained for Cdk2 using ab232753 at 20  $\mu\text{g/ml}$  in immunohistochemical analysis, followed by HRP-Linked Goat Anti-Rabbit IgG Polyclonal Antibody at 2  $\mu\text{g/ml}$ . DAB staining.



Immunohistochemistry (Formalin/PFA-fixed paraffin-embedded sections) - Anti-Cdk2 antibody (ab232753)

Paraffin-embedded human colorectal cancer tissue stained for Cdk2 using ab232753 at 20  $\mu\text{g/ml}$  in immunohistochemical analysis, followed by HRP-Linked Goat Anti-Rabbit IgG Polyclonal Antibody at 2  $\mu\text{g/ml}$ . DAB staining.



Anti-Cdk2 antibody (ab232753) at 2 µg/ml + Recombinant human Cdk2 protein

**Predicted band size:** 34 kDa

**Please note:** All products are "FOR RESEARCH USE ONLY. NOT FOR USE IN DIAGNOSTIC PROCEDURES"

#### **Our Abpromise to you: Quality guaranteed and expert technical support**

---

- Replacement or refund for products not performing as stated on the datasheet
- Valid for 12 months from date of delivery
- Response to your inquiry within 24 hours
- We provide support in Chinese, English, French, German, Japanese and Spanish
- Extensive multi-media technical resources to help you
- We investigate all quality concerns to ensure our products perform to the highest standards

If the product does not perform as described on this datasheet, we will offer a refund or replacement. For full details of the Abpromise, please visit <https://www.abcam.com/abpromise> or contact our technical team.

#### **Terms and conditions**

---

- Guarantee only valid for products bought direct from Abcam or one of our authorized distributors