


Product datasheet

Anti-Cdk2 antibody ab64669

KO **VALIDATED**

[2 References](#) [2 Images](#)

Overview

Product name	Anti-Cdk2 antibody
Description	Rabbit polyclonal to Cdk2
Host species	Rabbit
Tested applications	Suitable for: WB
Species reactivity	Reacts with: Rat, Human Predicted to work with: Mouse, Cow, Dog, Chinese hamster, Syrian hamster 
Immunogen	Synthetic peptide conjugated to KLH derived from within residues 250 to the C-terminus of Human Cdk2. Read Abcam's proprietary immunogen policy (Peptide available as ab71917 .)
Positive control	This antibody gave a positive signal in the following Lysates: HeLa Whole Cell, Rat Thymus Tissue, HeLa Whole Cell - Bleomycin Treated (20U/ml), Jurkat Whole Cell, Y79 Whole Cell

Properties

Form	Liquid
Storage instructions	Shipped at 4°C. Store at +4°C short term (1-2 weeks). Upon delivery aliquot. Store at -20°C or -80°C. Avoid freeze / thaw cycle.
Storage buffer	Preservative: 0.02% Sodium Azide Constituents: 1% BSA, PBS, pH 7.4
Purity	Immunogen affinity purified
Clonality	Polyclonal
Isotype	IgG

Applications

Our [Abpromise guarantee](#) covers the use of **ab64669** in the following tested applications.

The application notes include recommended starting dilutions; optimal dilutions/concentrations should be determined by the end user.

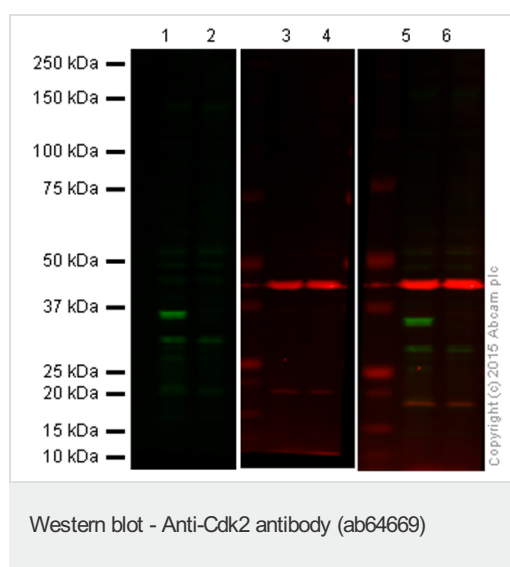
Application	Abreviews	Notes
WB		Use a concentration of 1 µg/ml. Detects a band of approximately 35 kDa (predicted molecular weight: 35 kDa).

Target

Function Involved in the control of the cell cycle. Interacts with cyclins A, B1, B3, D, or E. Activity of CDK2 is maximal during S phase and G2.

Sequence similarities Belongs to the protein kinase superfamily. CMGC Ser/Thr protein kinase family. CDC2/CDKX subfamily.
Contains 1 protein kinase domain.

Images



Lanes 1, 3 and 5: Wild-type HAP1 cell lysate (20 µg)

Lanes 2, 4 and 6: CDK2 knockout HAP1 cell lysate (20 µg)

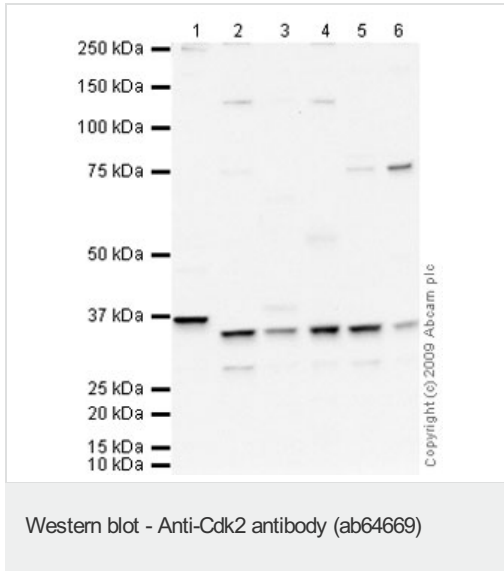
Lanes 1 and 2: Green signal from target – ab64669 observed at 34 kDa

Lanes 3 and 4: Red signal from loading control – ab8226 observed at 42 kDa

Lanes 5 and 6: Merged (red and green) signal

ab64669 was shown to react with CDK2 when CDK2 knockout samples were used, along with additional cross-reactive bands. Wild-type and CDK2 knockout samples were subjected to SDS-PAGE. ab64669 and ab8226 (loading control to beta actin) were diluted 1 µg/mL and 1/2000 respectively and incubated overnight at 4°C. Blots were developed with Goat anti-Rabbit IgG H&L (IRDye® 800CW) preadsorbed ab216773 and Goat anti-Mouse IgG H&L (IRDye® 680RD) preadsorbed ab216776

secondary antibodies at 1/10000 dilution for 1 h at room temperature before imaging.



All lanes : Anti-Cdk2 antibody (ab64669) at 1 µg/ml

Lane 1 : Human liver tissue lysate - total protein ([ab29889](#))

Lane 2 : HeLa (Human epithelial carcinoma cell line) Whole Cell Lysate

Lane 3 : Thymus (Rat) Tissue Lysate

Lane 4 : HeLa Whole Cell Lysate - Bleomycin Treated (20U/ml)

Lane 5 : Jurkat (Human T cell lymphoblast-like cell line) Whole Cell Lysate

Lane 6 : Y79 (Human retinoblastoma cell line) Whole Cell Lysate

Lysates/proteins at 10 µg per lane.

Secondary

All lanes : Goat polyclonal to Rabbit IgG - H&L - Pre-Adsorbed (HRP) at 1/3000 dilution

Performed under reducing conditions.

Predicted band size: 35 kDa

Observed band size: 35 kDa

Additional bands at: 37 kDa. We are unsure as to the identity of these extra bands.

Please note: All products are "FOR RESEARCH USE ONLY. NOT FOR USE IN DIAGNOSTIC PROCEDURES"

Our Promise to you: Quality guaranteed and expert technical support

- Replacement or refund for products not performing as stated on the datasheet
- Valid for 12 months from date of delivery
- Response to your inquiry within 24 hours
- We provide support in Chinese, English, French, German, Japanese and Spanish
- Extensive multi-media technical resources to help you
- We investigate all quality concerns to ensure our products perform to the highest standards

If the product does not perform as described on this datasheet, we will offer a refund or replacement. For full details of the Abpromise, please visit <https://www.abcam.com/abpromise> or contact our technical team.

Terms and conditions

- Guarantee only valid for products bought direct from Abcam or one of our authorized distributors