

## Product datasheet

# Anti-Cdk6 antibody [98D] ab241554

**KO** **VALIDATED** Recombinant

[2 References](#) [4 Images](#)

### Overview

<b>Product name</b>	Anti-Cdk6 antibody [98D]
<b>Description</b>	Mouse monoclonal [98D] to Cdk6
<b>Host species</b>	Mouse
<b>Tested applications</b>	<b>Suitable for:</b> WB <b>Unsuitable for:</b> ICC/IF
<b>Species reactivity</b>	<b>Reacts with:</b> Mouse, Rat, Human
<b>Immunogen</b>	Recombinant fragment within Mouse Cdk6 aa 1-350. The exact immunogen sequence used to generate this antibody is proprietary information. If additional detail on the immunogen is needed to determine the suitability of the antibody for your needs, please <a href="#">contact</a> our Scientific Support team to discuss your requirements. Database link: <a href="#">Q00534</a>
<b>Positive control</b>	WB: HeLa, Jurkat, K562, RAW 264.7 and PC-12 whole cell lysates.
<b>General notes</b>	This antibody clone is manufactured by Abcam. If you require a custom buffer formulation or conjugation for your experiments, please contact <a href="mailto:orders@abcam.com">orders@abcam.com</a> .  This product is a recombinant monoclonal antibody, which offers several advantages including: <ul style="list-style-type: none"> <li>- High batch-to-batch consistency and reproducibility</li> <li>- Improved sensitivity and specificity</li> <li>- Long-term security of supply</li> <li>- Animal-free production</li> </ul> For more information <a href="#">see here</a> .

[Run BLAST with](#)

[Run BLAST with](#)

### Properties

<b>Form</b>	Liquid
<b>Storage instructions</b>	Shipped at 4°C. Store at +4°C short term (1-2 weeks). Upon delivery aliquot. Store at -20°C long term. Avoid freeze / thaw cycle.
<b>Storage buffer</b>	pH: 7.2 Preservative: 0.01% Sodium azide Constituents: PBS, 0.05% BSA, 40% Glycerol (glycerin, glycerine)

<b>Purity</b>	Protein A purified
<b>Clonality</b>	Monoclonal
<b>Clone number</b>	98D
<b>Isotype</b>	IgG1

## Applications

**The Abpromise guarantee** Our [Abpromise guarantee](#) covers the use of ab241554 in the following tested applications. The application notes include recommended starting dilutions; optimal dilutions/concentrations should be determined by the end user.

Application	Abreviews	Notes
<b>WB</b>		Use a concentration of 0.518 µg/ml. Detects a band of approximately 37 kDa (predicted molecular weight: 37 kDa).

**Application notes** Is unsuitable for ICC/IF.

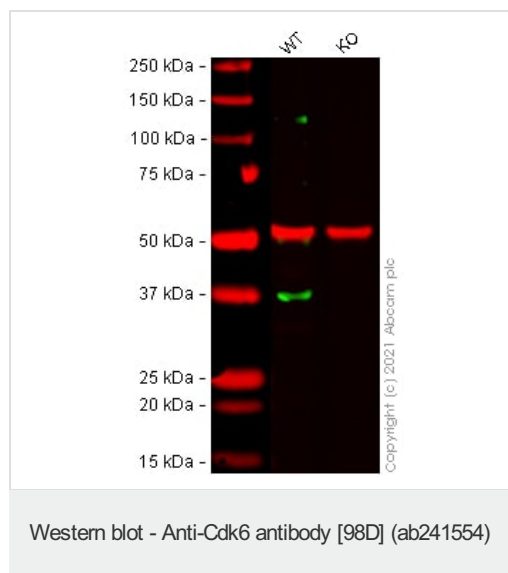
## Target

**Function** Probably involved in the control of the cell cycle. Interacts with D-type G1 cyclins.

**Sequence similarities** Belongs to the protein kinase superfamily. CMGC Ser/Thr protein kinase family. CDC2/CDKX subfamily.

Contains 1 protein kinase domain.

## Images



**All lanes** : Anti-Cdk6 antibody [98D] (ab241554) at 1/2000 dilution

**Lane 1** : Wild-type HeLa cell lysate

**Lane 2** : CDK6 knockout HeLa cell lysate

Lysates/proteins at 20 µg per lane.

Performed under reducing conditions.

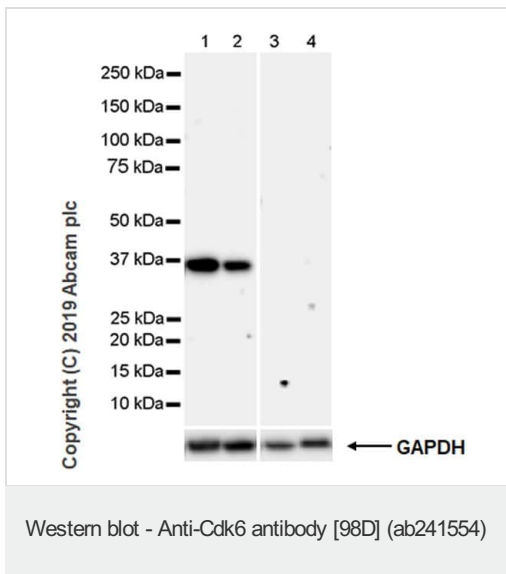
**Predicted band size:** 37 kDa

**Observed band size:** 38 kDa

**Lanes 1 - 2:** Merged signal (red and green). Green - ab241554 observed at 38 kDa. Red - loading control [ab52866](#) (Rabbit anti-alpha Tubulin antibody [EP1332Y]) observed at 55 kDa.

ab241554 was shown to react with Cdk6 in HeLa wild-type cells in

Western blot with loss of signal observed in CDK6 knockout cell line [ab266059](#) (CDK6 knockout cell lysate [ab257088](#)). Wild-type HeLa and CDK6 knockout cell lysates were subjected to SDS-PAGE. Membranes were blocked in 3 % milk in TBS-T (0.1 % Tween®) before incubation with [ab241554](#) and [ab52866](#) (Rabbit anti-alpha Tubulin antibody [EP1332Y]) overnight at 4°C at a 1 in 2000 dilution and a 1 in 20000 dilution respectively. Blots were incubated with Goat anti-Mouse IgG H&L (IRDye® 800CW) preabsorbed ([ab216772](#)) and Goat anti-Rabbit IgG H&L (IRDye® 680RD) preabsorbed ([ab216777](#)) secondary antibodies at 1 in 20000 dilution for 1 h at room temperature before imaging.



**All lanes :** Anti-Cdk6 antibody [98D] (ab241554) at 0.518 µg/ml

**Lane 1 :** Jurkat (human T cell leukemia T lymphocyte), whole cell lysate

**Lane 2 :** K-562 (human chronic myelogenous leukemia lymphoblast), whole cell lysate

**Lane 3 :** PANC-1 (human pancreatic epithelioid carcinoma epithelial cell), whole cell lysate

**Lane 4 :** Saos-2 (human osteosarcoma epithelial), whole cell lysate

Lysates/proteins at 20 µg per lane.

#### Secondary

**All lanes :** Peroxidase-Conjugated Goat anti-Mouse IgG (H+L) at 1/10000 dilution

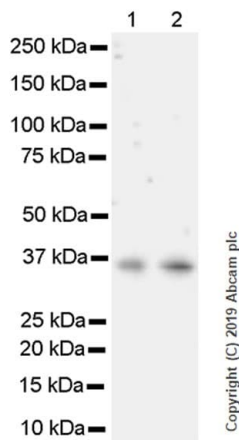
**Predicted band size:** 37 kDa

**Observed band size:** 37 kDa

Blocking and dilution buffer: 5% NFDm/TBST.

Exposure time: 3 minutes.

**Negative control:** PANC-1, Saos-2. (PMID: 8114739).



Western blot - Anti-Cdk6 antibody [98D] (ab241554)

**All lanes :** Anti-Cdk6 antibody [98D] (ab241554) at 0.518 µg/ml

**Lane 1 :** RAW264.7 (mouse Abelson murine leukemia virus-induced tumor macrophage), whole cell lysate

**Lane 2 :** PC-12 (rat adrenal gland pheochromocytoma), whole cell lysate

Lysates/proteins at 20 µg per lane.

**Secondary**

**All lanes :** Peroxidase-Conjugated Goat anti-Mouse IgG (H+L) at 1/10000 dilution

**Predicted band size:** 37 kDa

**Observed band size:** 37 kDa

Blocking and dilution buffer: 5% NFDm/TBST.

Exposure time: 3 minutes.

Why choose a recombinant antibody?

 <b>Research with confidence</b> Consistent and reproducible results	 <b>Long-term and scalable supply</b> Recombinant technology
 <b>Success from the first experiment</b> Confirmed specificity	 <b>Ethical standards compliant</b> Animal-free production

Anti-Cdk6 antibody [98D] (ab241554)

**Please note:** All products are "FOR RESEARCH USE ONLY. NOT FOR USE IN DIAGNOSTIC PROCEDURES"

## **Our Abpromise to you: Quality guaranteed and expert technical support**

---

- Replacement or refund for products not performing as stated on the datasheet
- Valid for 12 months from date of delivery
- Response to your inquiry within 24 hours
  
- We provide support in Chinese, English, French, German, Japanese and Spanish
- Extensive multi-media technical resources to help you
- We investigate all quality concerns to ensure our products perform to the highest standards

If the product does not perform as described on this datasheet, we will offer a refund or replacement. For full details of the Abpromise, please visit <https://www.abcam.com/abpromise> or contact our technical team.

## **Terms and conditions**

---

- Guarantee only valid for products bought direct from Abcam or one of our authorized distributors