


Product datasheet

Anti-CDX2 antibody ab227201

3 Images

Overview

<b>Product name</b>	Anti-CDX2 antibody
<b>Description</b>	Rabbit polyclonal to CDX2
<b>Host species</b>	Rabbit
<b>Tested applications</b>	<b>Suitable for:</b> IHC-P, WB, ICC/IF
<b>Species reactivity</b>	<b>Reacts with:</b> Human <b>Predicted to work with:</b> Mouse, Rat, Cow, Pig 
<b>Immunogen</b>	Recombinant fragment within Human CDX2 (internal sequence). The exact sequence is proprietary. Database link: <a href="#">Q99626</a>
<b>Positive control</b>	WB: H1299 whole cell lysate. IHC-P: Human colon tissue. ICC/IF: HeLa cells.

Properties

<b>Form</b>	Liquid
<b>Storage instructions</b>	Shipped at 4°C. Store at +4°C short term (1-2 weeks). Upon delivery aliquot. Store at -20°C long term. Avoid freeze / thaw cycle.
<b>Storage buffer</b>	pH: 7.00 Preservative: 0.025% Proclin Constituents: PBS, 1% BSA, 20% Glycerol
<b>Purity</b>	Immunogen affinity purified
<b>Clonality</b>	Polyclonal
<b>Isotype</b>	IgG

Applications

Our [Abpromise guarantee](#) covers the use of **ab227201** in the following tested applications.

The application notes include recommended starting dilutions; optimal dilutions/concentrations should be determined by the end user.

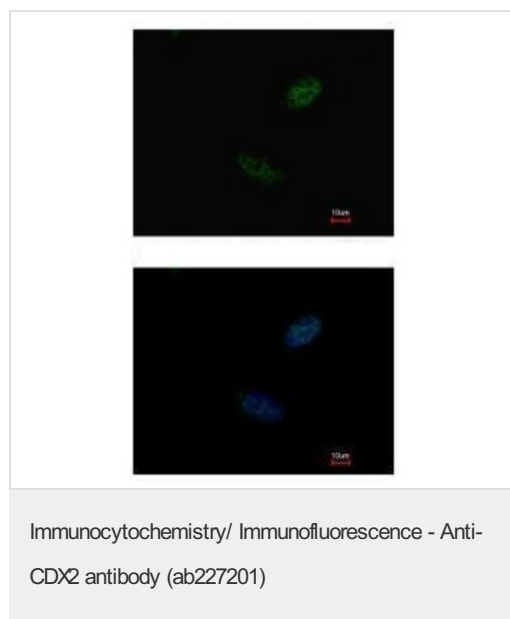
Application	Abreviews	Notes
IHC-P		1/100 - 1/1000.

Application	Abreviews	Notes
WB		1/500 - 1/3000. Predicted molecular weight: 33 kDa.
ICC/IF		1/100 - 1/1000.

## Target

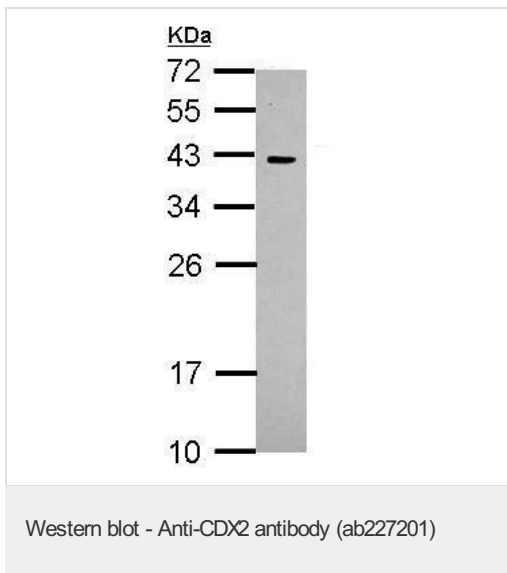
<b>Function</b>	Involved in the transcriptional regulation of multiple genes expressed in the intestinal epithelium. Important in broad range of functions from early differentiation to maintenance of the intestinal epithelial lining of both the small and large intestine.
<b>Sequence similarities</b>	Belongs to the Caudal homeobox family. Contains 1 homeobox DNA-binding domain.
<b>Post-translational modifications</b>	Phosphorylation of Ser-60 mediates the transactivation capacity.
<b>Cellular localization</b>	Nucleus.

## Images



Paraformaldehyde-fixed HeLa (human epithelial cell line from cervix adenocarcinoma) cells stained for CDX2 (green) using ab227201 at 1/500 dilution in ICC/IF.

Blue: Hoechst 33342 staining.



Anti-CDX2 antibody (ab227201) at 1/1000 dilution + H1299 whole cell lysate at 30 µg

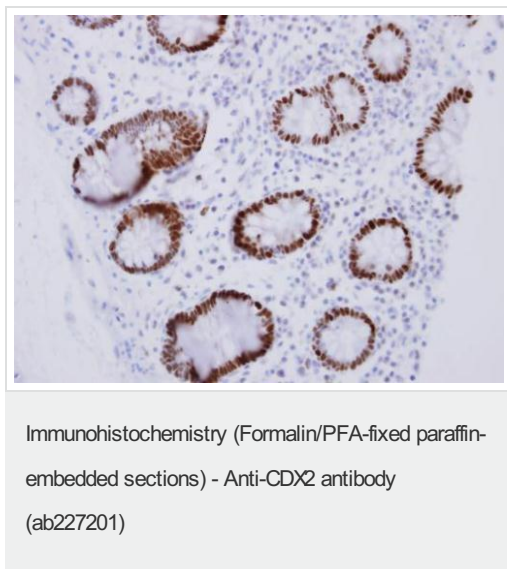
**Secondary**

HRP-conjugated anti-rabbit IgG

Developed using the ECL technique.

**Predicted band size:** 33 kDa

12% SDS PAGE



Paraffin-embedded human colon tissue stained for CDX2 with ab227201 at 1/250 dilution in immunohistochemical analysis.

**Please note:** All products are "FOR RESEARCH USE ONLY. NOT FOR USE IN DIAGNOSTIC PROCEDURES"

**Our Abpromise to you: Quality guaranteed and expert technical support**

- Replacement or refund for products not performing as stated on the datasheet
- Valid for 12 months from date of delivery

- Response to your inquiry within 24 hours
- We provide support in Chinese, English, French, German, Japanese and Spanish
- Extensive multi-media technical resources to help you
- We investigate all quality concerns to ensure our products perform to the highest standards

If the product does not perform as described on this datasheet, we will offer a refund or replacement. For full details of the Abpromise, please visit <https://www.abcam.com/abpromise> or contact our technical team.

### **Terms and conditions**

---

- Guarantee only valid for products bought direct from Abcam or one of our authorized distributors