

Product datasheet

Anti-CEBP Alpha/CEBPA antibody [EP709Y] αb40764

Recombinant RabMAb

★★★★★ 2 Abreviews 26 References 1 Image

Overview

Product name	Anti-CEBP Alpha/CEBPA antibody [EP709Y]
Description	Rabbit monoclonal [EP709Y] to CEBP Alpha/CEBPA
Host species	Rabbit
Tested applications	Suitable for: WB Unsuitable for: Flow Cyt, ICC/IF or IP
Species reactivity	Reacts with: Mouse, Rat, Human
Immunogen	corresponding to Human CEBP Alpha/CEBPA aa 300-400 (C terminal).
Positive control	U937 cell lysate
General notes	This product was previously labelled as CEBP Alpha

This product is a recombinant monoclonal antibody, which offers several advantages including:

- High batch-to-batch consistency and reproducibility
- Improved sensitivity and specificity
- Long-term security of supply
- Animal-free production

For more information [see here](#).

Our RabMAb[®] technology is a patented hybridoma-based technology for making rabbit monoclonal antibodies. For details on our patents, please refer to [RabMAb[®] patents](#).

We are constantly working hard to ensure we provide our customers with best in class antibodies. As a result of this work we are pleased to now offer this antibody in purified format. We are in the process of updating our datasheets. The purified format is designated 'PUR' on our product labels. If you have any questions regarding this update, please contact our Scientific Support team.

Properties

Form	Liquid
Storage instructions	Shipped at 4°C. Store at +4°C short term (1-2 weeks). Upon delivery aliquot. Store at -20°C long term. Avoid freeze / thaw cycle.

Storage buffer	pH: 7.20 Preservative: 0.01% Sodium azide Constituents: 59% PBS, 40% Glycerol, 0.05% BSA
Purity	Protein A purified
Clonality	Monoclonal
Clone number	EP709Y
Isotype	IgG

Applications

Our [Abpromise guarantee](#) covers the use of **ab40764** in the following tested applications.

The application notes include recommended starting dilutions; optimal dilutions/concentrations should be determined by the end user.

Application	Abreviews	Notes
WB	★★★★★	1/500 - 1/1000. Detects a band of approximately 43 kDa (predicted molecular weight: 43 kDa).

Application notes Is unsuitable for Flow Cyt, ICC/IF or IP.

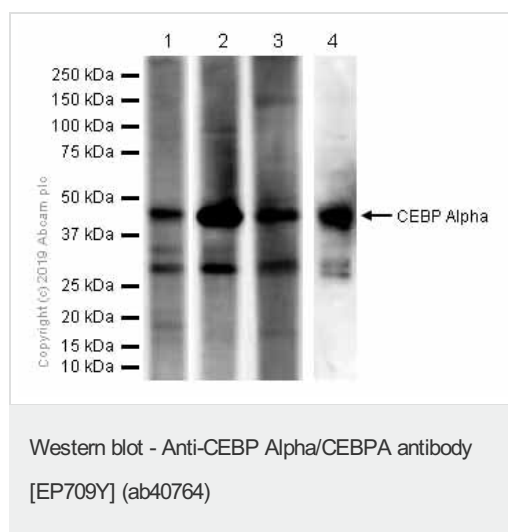
Target

Function C/EBP is a DNA-binding protein that recognizes two different motifs: the CCAAT homology common to many promoters and the enhanced core homology common to many enhancers.

Sequence similarities Belongs to the bZIP family. C/EBP subfamily.
Contains 1 bZIP domain.

Cellular localization Nucleus.

Images



All lanes : Anti-CEBP Alpha/CEBPA antibody [EP709Y] (ab40764) at 1/1000 dilution (Purified)

Lane 1 : U-937 (Human histiocytic lymphoma monocyte) whole cell lysates

Lane 2 : THP-1 (Human monocytic leukemia monocyte) whole cell lysates

Lane 3 : Mouse liver lysates

Lane 4 : Rat liver lysates

Lysates/proteins at 15 µg per lane.

Secondary

All lanes : Goat Anti-Rabbit IgG H&L (HRP) (ab97051) at 1/20000 dilution

Predicted band size: 43 kDa

Observed band size: 43 kDa

This antibody detects high backgrounds

Please note: All products are "FOR RESEARCH USE ONLY. NOT FOR USE IN DIAGNOSTIC PROCEDURES"

Our Abpromise to you: Quality guaranteed and expert technical support

- Replacement or refund for products not performing as stated on the datasheet
- Valid for 12 months from date of delivery
- Response to your inquiry within 24 hours

- We provide support in Chinese, English, French, German, Japanese and Spanish
- Extensive multi-media technical resources to help you
- We investigate all quality concerns to ensure our products perform to the highest standards

If the product does not perform as described on this datasheet, we will offer a refund or replacement. For full details of the Abpromise, please visit <https://www.abcam.com/abpromise> or contact our technical team.

Terms and conditions

- Guarantee only valid for products bought direct from Abcam or one of our authorized distributors