


Product datasheet

Anti-CEBP Beta antibody ab264305

1 References 3 Images

Overview

Product name	Anti-CEBP Beta antibody
Description	Rabbit polyclonal to CEBP Beta
Host species	Rabbit
Tested applications	Suitable for: IHC-P, IP, WB
Species reactivity	Reacts with: Human Predicted to work with: Mouse, Rat, Cow 
Immunogen	Synthetic peptide within Human CEBP Beta aa 50-100. The exact sequence is proprietary. Database link: P17676
Positive control	IHC-P: Human prostate carcinoma. WB: HeLa, HEK-293T and Jurkat whole cell lysate. IP: HeLa whole cell lysate.
General notes	<p>The Life Science industry has been in the grips of a reproducibility crisis for a number of years. Abcam is leading the way in addressing this with our range of recombinant monoclonal antibodies and knockout edited cell lines for gold-standard validation. Please check that this product meets your needs before purchasing.</p> <p>If you have any questions, special requirements or concerns, please send us an inquiry and/or contact our Support team ahead of purchase. Recommended alternatives for this product can be found below, along with publications, customer reviews and Q&As</p>

Properties

Form	Liquid
Storage instructions	Shipped at 4°C. Store at +4°C short term (1-2 weeks). Upon delivery aliquot. Store at -20°C. Avoid freeze / thaw cycle.
Storage buffer	pH: 7 Preservative: 0.09% Sodium azide Constituent: Tris citrate/phosphate
Purity	pH 7 to 8 Immunogen affinity purified
Clonality	Polyclonal
Isotype	IgG

Applications

The Abpromise guarantee Our [Abpromise guarantee](#) covers the use of ab264305 in the following tested applications.

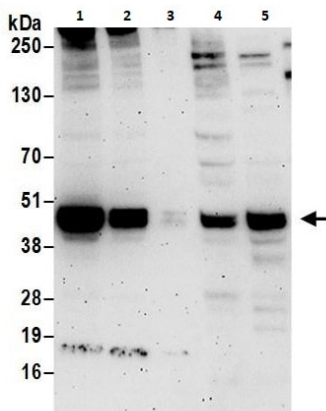
The application notes include recommended starting dilutions; optimal dilutions/concentrations should be determined by the end user.

Application	Abreviews	Notes
IHC-P		1/500 - 1/2000. Perform heat mediated antigen retrieval with citrate buffer pH 6 before commencing with IHC staining protocol.
IP		Use at 2-10 µg/mg of lysate.
WB		1/2000 - 1/10000.

Target

Function	Important transcriptional activator in the regulation of genes involved in immune and inflammatory responses. Specifically binds to an IL-1 response element in the IL-6 gene. NF-IL6 also binds to regulatory regions of several acute-phase and cytokines genes. It probably plays a role in the regulation of acute-phase reaction, inflammation and hemopoiesis. The consensus recognition site is 5'-T[TG]NNGNAA[TG]-3'. Functions in brown adipose tissue (BAT) differentiation.
Tissue specificity	Expressed at low levels in the lung, kidney and spleen.
Sequence similarities	Belongs to the bZIP family. C/EBP subfamily. Contains 1 bZIP domain.
Domain	the 9aaTAD motif is a transactivation domain present in a large number of yeast and animal transcription factors.
Post-translational modifications	Sumoylated by polymeric chains of SUMO2 or SUMO3.
Cellular localization	Nucleus.

Images



Western blot - Anti-CEBP Beta antibody (ab264305)

All lanes : Anti-CEBP Beta antibody (ab264305) at 0.1 µg/ml

Lane 1 : HeLa whole cell lysate at 50 µg

Lane 2 : HeLa whole cell lysate at 15 µg

Lane 3 : HeLa whole cell lysate at 5 µg

Lane 4 : HEK-293T whole cell lysate at 50 µg

Lane 5 : Jurkat whole cell lysate at 50 µg

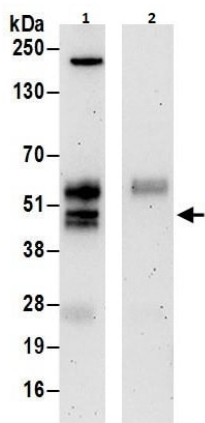
Secondary

All lanes : Goat anti-Rabbit Light Chain HRP Conjugate

Exposure time: 3 minutes

Cells prepared using NETN lysis buffer.

4-20% SDS-PAGE.



Immunoprecipitation - Anti-CEBP Beta antibody (ab264305)

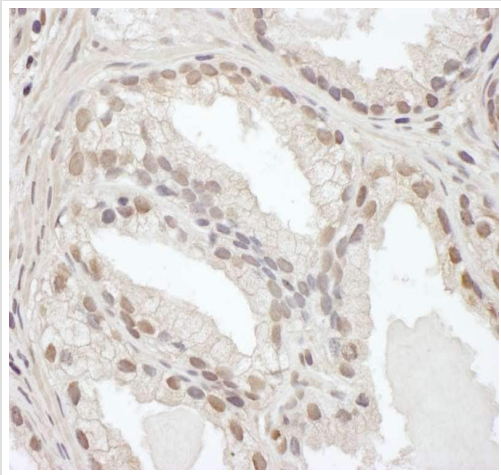
CEBP Beta was immunoprecipitated from 1mg of HeLa (Human epithelial cell line from cervix adenocarcinoma) whole cell lysate with ab264305 at 6 µg per reaction. Western blot was performed from the immunoprecipitate using ab264305 at 1 µg/ml.

Lane 1: ab264305 IP in HeLa whole cell lysate.

Lane 2: Control IgG.

Exposure time: 3 mins.

Cells prepared using NETN lysis buffer.



Immunohistochemical analysis of formalin-fixed, paraffin-embedded human prostate carcinoma tissue labeling CEBP Beta with ab264305 at 1/1,000 dilution. Detection: DAB.

Immunohistochemistry (Formalin/PFA-fixed paraffin-embedded sections) - Anti-CEBP Beta antibody (ab264305)

Please note: All products are "FOR RESEARCH USE ONLY. NOT FOR USE IN DIAGNOSTIC PROCEDURES"

Our Abpromise to you: Quality guaranteed and expert technical support

- Replacement or refund for products not performing as stated on the datasheet
- Valid for 12 months from date of delivery
- Response to your inquiry within 24 hours
- We provide support in Chinese, English, French, German, Japanese and Spanish
- Extensive multi-media technical resources to help you
- We investigate all quality concerns to ensure our products perform to the highest standards

If the product does not perform as described on this datasheet, we will offer a refund or replacement. For full details of the Abpromise, please visit <https://www.abcam.com/abpromise> or contact our technical team.

Terms and conditions

- Guarantee only valid for products bought direct from Abcam or one of our authorized distributors