

Product datasheet

Cell Migration/Chemotaxis Assay Kit (24-well, 8 µm)  
ab235694

2 Images

Overview

<b>Product name</b>	Cell Migration/Chemotaxis Assay Kit (24-well, 8 µm)
<b>Detection method</b>	Fluorescent
<b>Sample type</b>	Adherent cells, Suspension cells
<b>Species reactivity</b>	<b>Reacts with:</b> Mouse, Human
<b>Product overview</b>	Cell Migration/Chemotaxis Assay Kit (24-well, 8 µm) (ab235694) utilizes a Boyden chamber, where the cells migrate through a semi-permeable membrane under different stimuli. Cell migration can be analyzed directly by reading fluorescence (Ex/Em = 530/590 nm) in a plate reader. Our assay is easy to use, sensitive and adaptable to high-throughput systems.

**Notes**

Cell invasion is the ability of cells to migrate from one area to another through an extracellular matrix. Cell invasion is exhibited by both normal cells as well as cancerous cells in response to specific external signals, including chemical and mechanical stimuli. During invasion, extracellular matrix is enzymatically degraded by cellular proteases before cells migrate to the new location. Cell invasion is required for normal processes such as wound repair, vasculature formation and the inflammatory response as well as the abnormal invasion of tissues by tumor cells during metastasis.

**Platform** Microplate reader

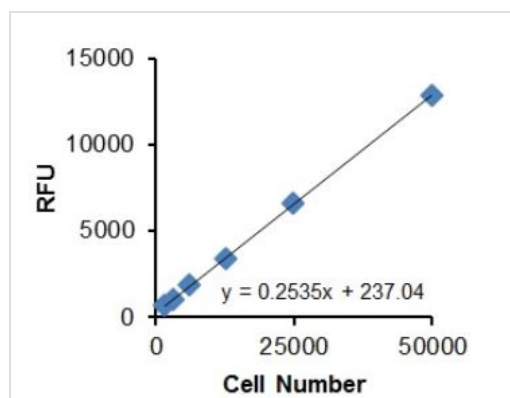
Properties

**Storage instructions** Store at -20°C. Please refer to protocols.

Components	12 tests
Cell Dissociation Solution	1 x 6ml
Cell Dye	1 x 1.5ml
Cell Migration Chamber	1 unit
Control Migration Inducer	1 x 300µl
Wash Buffer	1 x 25ml

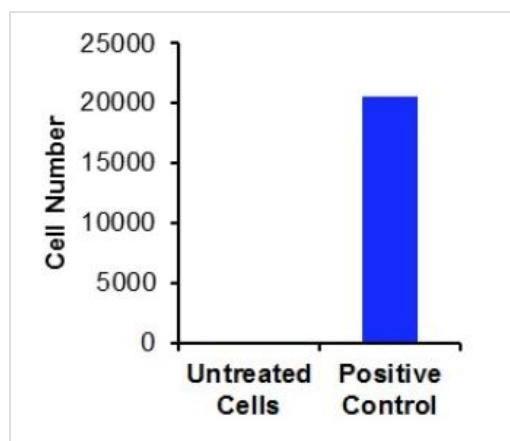
## Images

---



Standard Curve.

HT-1080 cells were harvested, counted and serially diluted to obtain desired cell number. Cells were incubated according to the protocol.



Cell Invasion.

**Please note:** All products are "FOR RESEARCH USE ONLY. NOT FOR USE IN DIAGNOSTIC PROCEDURES"

### Our Abpromise to you: Quality guaranteed and expert technical support

---

- Replacement or refund for products not performing as stated on the datasheet
- Valid for 12 months from date of delivery
- Response to your inquiry within 24 hours
- We provide support in Chinese, English, French, German, Japanese and Spanish
- Extensive multi-media technical resources to help you
- We investigate all quality concerns to ensure our products perform to the highest standards

If the product does not perform as described on this datasheet, we will offer a refund or replacement. For full details of the Abpromise, please visit <https://www.abcam.com/abpromise> or contact our technical team.

### Terms and conditions

---

- Guarantee only valid for products bought direct from Abcam or one of our authorized distributors