

## Product datasheet

# Anti-CELSR1 antibody ab196600

★★★★☆ 2 Abreviews 1 Image

### Overview

---

<b>Product name</b>	Anti-CELSR1 antibody
<b>Description</b>	Rabbit polyclonal to CELSR1
<b>Host species</b>	Rabbit
<b>Specificity</b>	ab196600 detects endogenous levels of total CELSR1 protein.
<b>Tested applications</b>	<b>Suitable for:</b> ICC/IF
<b>Species reactivity</b>	<b>Reacts with:</b> Mouse
<b>Immunogen</b>	Synthetic peptide within Human CELSR1 (internal sequence). The exact sequence is proprietary. Database link: <a href="#">Q9NYQ6</a>
<b>Positive control</b>	MCF7 cells
<b>General notes</b>	<p>Reproducibility is key to advancing scientific discovery and accelerating scientists' next breakthrough.</p> <p>Abcam is leading the way with our range of recombinant antibodies, knockout-validated antibodies and knockout cell lines, all of which support improved reproducibility.</p> <p>We are also planning to innovate the way in which we present recommended applications and species on our product datasheets, so that only applications &amp; species that have been tested in our own labs, our suppliers or by selected trusted collaborators are covered by our Abpromise™ guarantee.</p> <p>In preparation for this, we have started to update the applications &amp; species that this product is Abpromise guaranteed for.</p> <p>We are also updating the applications &amp; species that this product has been "predicted to work with," however this information is not covered by our Abpromise guarantee.</p> <p>Applications &amp; species from publications and Abreviews that have not been tested in our own labs or in those of our suppliers are not covered by the Abpromise guarantee.</p> <p>Please check that this product meets your needs before purchasing. If you have any questions, special requirements or concerns, please send us an inquiry and/or contact our Support team ahead of purchase. Recommended alternatives for this product can be found below, as well as customer reviews and Q&amp;As.</p>

### Properties

---

<b>Form</b>	Liquid
<b>Storage instructions</b>	Shipped at 4°C. Store at +4°C short term (1-2 weeks). Upon delivery aliquot. Store at -20°C long term. Avoid freeze / thaw cycle.
<b>Storage buffer</b>	pH: 7.40 Preservative: 0.02% Sodium azide Constituents: 50% Glycerol (glycerin, glycerine), 0.87% Sodium chloride, 49% PBS  PBS is without Mg <sup>2+</sup> and Ca <sup>2+</sup>
<b>Purity</b>	Immunogen affinity purified
<b>Clonality</b>	Polyclonal
<b>Isotype</b>	IgG

## Applications

Our [Abpromise guarantee](#) covers the use of **ab196600** in the following tested applications.

The application notes include recommended starting dilutions; optimal dilutions/concentrations should be determined by the end user.

Application	Abreviews	Notes
ICC/IF		1/100 - 1/500.

## Target

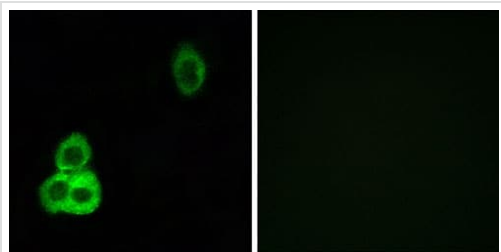
### Relevance

CELSR1 is a member of the flamingo subfamily, part of the cadherin superfamily. The flamingo subfamily consists of nonclassic type cadherins; a subpopulation that does not interact with catenins. The flamingo cadherins are located at the plasma membrane and have nine cadherin domains, seven epidermal growth factor like repeats and two laminin A G type repeats in their ectodomain. They also have seven transmembrane domains, a characteristic unique to this subfamily. It is postulated that these proteins are receptors involved in contact mediated communication, with cadherin domains acting as homophilic binding regions and the EGF like domains involved in cell adhesion and receptor ligand interactions. This particular member is a developmentally regulated, neural specific gene which plays an unspecified role in early embryogenesis. ESTs have been isolated from B-cell/lung/testis, breast, brain, colon, embryo, head/neck, heart, heart/melanocyte/uterus, kidney, lung, lymph node, placenta, and tonsil libraries.

### Cellular localization

Integral membrane protein

## Images



Immunofluorescence analysis of MCF-7 cells, labeling CELSR1 with ab196600 at 1/100 dilution.

Immunocytochemistry/ Immunofluorescence - Anti-CELSR1 antibody (ab196600)

**Please note:** All products are "FOR RESEARCH USE ONLY. NOT FOR USE IN DIAGNOSTIC PROCEDURES"

### Our Abpromise to you: Quality guaranteed and expert technical support

---

- Replacement or refund for products not performing as stated on the datasheet
- Valid for 12 months from date of delivery
- Response to your inquiry within 24 hours
- We provide support in Chinese, English, French, German, Japanese and Spanish
- Extensive multi-media technical resources to help you
- We investigate all quality concerns to ensure our products perform to the highest standards

If the product does not perform as described on this datasheet, we will offer a refund or replacement. For full details of the Abpromise, please visit <https://www.abcam.com/abpromise> or contact our technical team.

### Terms and conditions

---

- Guarantee only valid for products bought direct from Abcam or one of our authorized distributors