


## Product datasheet

# Anti-CENP-V antibody ab200366

2 Images

### Overview

<b>Product name</b>	Anti-CENP-V antibody
<b>Description</b>	Rabbit polyclonal to CENP-V
<b>Host species</b>	Rabbit
<b>Tested applications</b>	<b>Suitable for:</b> IHC-P, WB
<b>Species reactivity</b>	<b>Reacts with:</b> Human <b>Predicted to work with:</b> Mouse 
<b>Immunogen</b>	Synthetic peptide corresponding to Human CENP-V (C terminal). NP_859067. Database link: <a href="#">Q7Z7K6-3</a>
<b>Positive control</b>	Jurkat cell lysate; Human gastric cancer tissue.
<b>General notes</b>	Previously labelled as PRR6.

### Properties

<b>Form</b>	Liquid
<b>Storage instructions</b>	Shipped at 4°C. Store at +4°C short term (1-2 weeks). Upon delivery aliquot. Store at -20°C long term. Avoid freeze / thaw cycle.
<b>Storage buffer</b>	pH: 7.3 Preservative: 0.05% Sodium azide Constituents: 49% PBS, 50% Glycerol
<b>Purity</b>	Immunogen affinity purified
<b>Clonality</b>	Polyclonal
<b>Isotype</b>	IgG

### Applications

Our [Abpromise guarantee](#) covers the use of **ab200366** in the following tested applications.

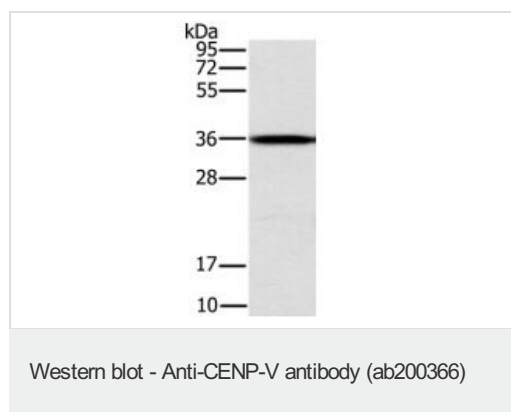
The application notes include recommended starting dilutions; optimal dilutions/concentrations should be determined by the end user.

Application	Abreviews	Notes
IHC-P		1/50 - 1/200. Perform heat mediated antigen retrieval before commencing with IHC staining protocol.
WB		1/200 - 1/1000. Predicted molecular weight: 30 kDa.

## Target

<b>Function</b>	Required for distribution of pericentromeric heterochromatin in interphase nuclei and for centromere formation and organization, chromosome alignment and cytokinesis.
<b>Sequence similarities</b>	Belongs to the gfa family.
<b>Cellular localization</b>	Chromosome > centromere > kinetochore. Nucleus. Cytoplasm > cytoskeleton > spindle. Enriched at the nuclear periphery and around the nucleolus. In mitotic cells, localizes to kinetochores from prometaphase to metaphase. At anaphase onset, transfers to the spindle midzone and then to the mid-body in telophase and cytokinesis.

## Images

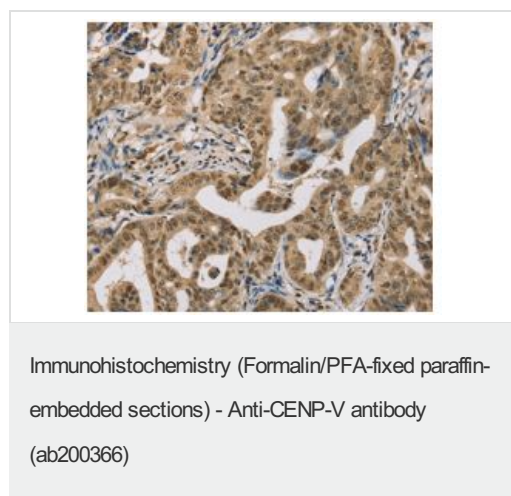


Anti-CENP-V antibody (ab200366) at 1/200 dilution + Jurkat cell lysate at 40 µg

**Predicted band size:** 30 kDa

**Exposure time:** 1 second

Gel: 10% SDS-PAGE



Immunohistochemical analysis of paraffin-embedded Human gastric cancer tissue labeling CENP-V with ab200366 at 1/30 dilution.

**Please note:** All products are "FOR RESEARCH USE ONLY. NOT FOR USE IN DIAGNOSTIC PROCEDURES"

## **Our Abpromise to you: Quality guaranteed and expert technical support**

---

- Replacement or refund for products not performing as stated on the datasheet
- Valid for 12 months from date of delivery
- Response to your inquiry within 24 hours
  
- We provide support in Chinese, English, French, German, Japanese and Spanish
- Extensive multi-media technical resources to help you
- We investigate all quality concerns to ensure our products perform to the highest standards

If the product does not perform as described on this datasheet, we will offer a refund or replacement. For full details of the Abpromise, please visit <https://www.abcam.com/abpromise> or contact our technical team.

## **Terms and conditions**

---

- Guarantee only valid for products bought direct from Abcam or one of our authorized distributors