




Product datasheet

Anti-CENPM antibody ab243820

4 Images

Overview

Product name	Anti-CENPM antibody
Description	Rabbit polyclonal to CENPM
Host species	Rabbit
Tested applications	Suitable for: IHC-P, WB, ICC/IF
Species reactivity	Reacts with: Human Predicted to work with: Cow 
Immunogen	Recombinant fragment corresponding to Human CENPM aa 6-81. Sequence: PLDKLPGLNTATILLVGTEDALLQQLADSMKEDCASELK VHLAKSLPLP SSVNRPRIDLIVFVNLHISKYSLQNT Database link: Q9NSP4  Run BLAST with  Run BLAST with
Positive control	IHC-P: Human lymph node tissue. WB: HEK-293 cell lysate. ICC/IF: U-2 OS cells.
General notes	<p>Reproducibility is key to advancing scientific discovery and accelerating scientists' next breakthrough.</p> <p>Abcam is leading the way with our range of recombinant antibodies, knockout-validated antibodies and knockout cell lines, all of which support improved reproducibility.</p> <p>We are also planning to innovate the way in which we present recommended applications and species on our product datasheets, so that only applications & species that have been tested in our own labs, our suppliers or by selected trusted collaborators are covered by our Abpromise™ guarantee.</p> <p>In preparation for this, we have started to update the applications & species that this product is Abpromise guaranteed for.</p> <p>We are also updating the applications & species that this product has been “predicted to work with,” however this information is not covered by our Abpromise guarantee.</p> <p>Applications & species from publications and Abreviews that have not been tested in our own labs or in those of our suppliers are not covered by the Abpromise guarantee.</p> <p>Please check that this product meets your needs before purchasing. If you have any questions, special requirements or concerns, please send us an inquiry and/or contact our Support team ahead of purchase. Recommended alternatives for this product can be found below, as well as customer reviews and Q&As.</p>

Properties

Form	Liquid
Storage instructions	Shipped at 4°C. Store at +4°C short term (1-2 weeks). Upon delivery aliquot. Store at -20°C long term. Avoid freeze / thaw cycle.
Storage buffer	pH: 7.20 Preservative: 0.02% Sodium azide Constituents: 40% Glycerol (glycerin, glycerine), PBS
Purity	Immunogen affinity purified
Clonality	Polyclonal
Isotype	IgG

Applications

Our [Abpromise guarantee](#) covers the use of **ab243820** in the following tested applications.

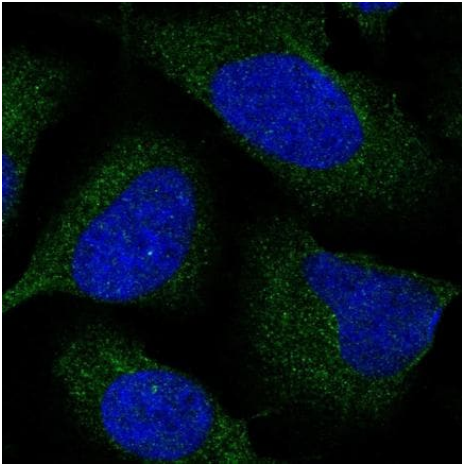
The application notes include recommended starting dilutions; optimal dilutions/concentrations should be determined by the end user.

Application	Abreviews	Notes
IHC-P		1/50 - 1/200. Perform heat mediated antigen retrieval with citrate buffer pH 6 before commencing with IHC staining protocol.
WB		Use a concentration of 0.04 - 0.4 µg/ml. Predicted molecular weight: 20 kDa.
ICC/IF		Use a concentration of 0.25 - 2 µg/ml. Fixation/Permeabilization: PFA/Triton X-100

Target

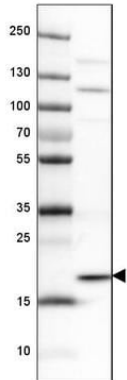
Relevance	CENPM (Centromere protein M) is a component of the CENPA-NAC (nucleosome associated) complex, a complex that plays a central role in kinetochore protein assembly, mitotic cell cycle progression and chromosome segregation.
Cellular localization	Cytoplasmic and Nuclear. Note: Nuclear in non confluent cells and cytoplasmic in confluent or dividing cells. Localizes in the kinetochore domain of centromeres.

Images



Immunocytochemistry/ Immunofluorescence - Anti-CENPM antibody (ab243820)

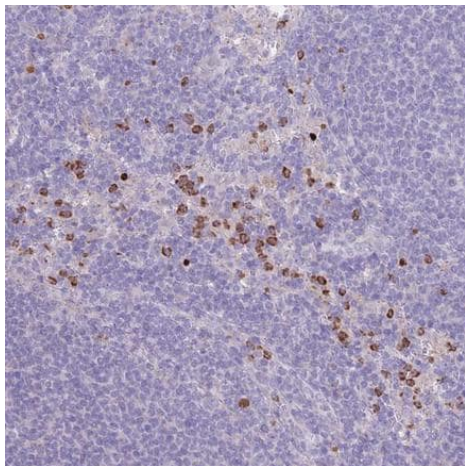
PFA fixed, Triton X-100 permeabilized U-2 OS (human bone osteosarcoma epithelial cell line) cells labeling CENPM using ab243820 at 4 $\mu\text{g/ml}$ (green) in ICC/IF.



Western blot - Anti-CENPM antibody (ab243820)

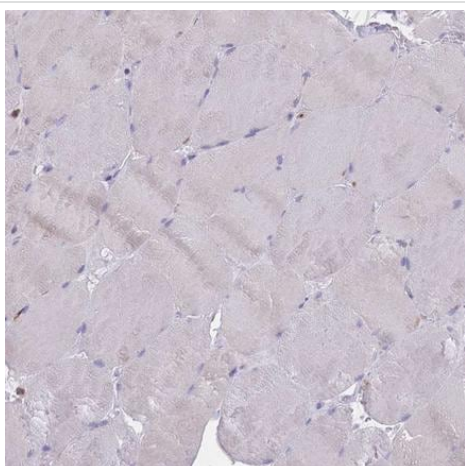
Anti-CENPM antibody (ab243820) at 0.4 $\mu\text{g/ml}$ + HEK-293 (Human epithelial cell line from embryonic kidney) cell lysate

Predicted band size: 20 kDa



Formalin-fixed, paraffin-embedded human lymph node tissue stained for CENPM with ab243820 at 1/50 dilution in immunohistochemical analysis.

Immunohistochemistry (Formalin/PFA-fixed paraffin-embedded sections) - Anti-CENPM antibody (ab243820)



Formalin-fixed, paraffin-embedded human skeletal muscle tissue stained for CENPM with ab243820 at a 1/50 dilution in immunohistochemical analysis. **Low expression as expected.**

Immunohistochemistry (Formalin/PFA-fixed paraffin-embedded sections) - Anti-CENPM antibody (ab243820)

Please note: All products are "FOR RESEARCH USE ONLY. NOT FOR USE IN DIAGNOSTIC PROCEDURES"

Our Abpromise to you: Quality guaranteed and expert technical support

- Replacement or refund for products not performing as stated on the datasheet
- Valid for 12 months from date of delivery
- Response to your inquiry within 24 hours

- We provide support in Chinese, English, French, German, Japanese and Spanish
- Extensive multi-media technical resources to help you
- We investigate all quality concerns to ensure our products perform to the highest standards

If the product does not perform as described on this datasheet, we will offer a refund or replacement. For full details of the Abpromise, please visit <https://www.abcam.com/abpromise> or contact our technical team.

Terms and conditions

- Guarantee only valid for products bought direct from Abcam or one of our authorized distributors