



Product datasheet

Anti-Centaurin alpha 2 antibody ab26067

1 Image

Overview

Product name	Anti-Centaurin alpha 2 antibody
Description	Goat polyclonal to Centaurin alpha 2
Host species	Goat
Tested applications	Suitable for: IHC-P
Species reactivity	Reacts with: Human
Immunogen	Synthetic peptide: RLTASTESGRSSR , corresponding to C terminal amino acids 369-381 of Human Centaurin alpha 2(Peptide available as ab45550 .)
	 Run BLAST with  Run BLAST with

Properties

Form	Liquid
Storage instructions	Shipped at 4°C. Upon delivery aliquot and store at -20°C. Avoid freeze / thaw cycles.
Storage buffer	Preservative: 0.02% Sodium Azide Constituents: 0.5% BSA, Tris buffered saline. pH 7.3
Purity	Immunogen affinity purified
Purification notes	This antibody was purified from goat serum by ammonium sulphate precipitation followed by antigen affinity chromatography using the immunizing peptide.
Clonality	Polyclonal
Isotype	IgG

Applications

Our [Abpromise guarantee](#) covers the use of **ab26067** in the following tested applications.

The application notes include recommended starting dilutions; optimal dilutions/concentrations should be determined by the end user.

Application	Abreviews	Notes
-------------	-----------	-------

IHC-P

Application notes

IHC-P: Use at a concentration of 5 µg/ml.
 This antibody gave a positive result in ELISA against the immunising peptide.
 Antibody detection limit dilution 1:32,000.

Not yet tested in other applications.
 Optimal dilutions/concentrations should be determined by the end user.

Target

Function

GTPase-activating protein for the ADP ribosylation factor family (Potential). Binds phosphatidylinositol 3,4,5-trisphosphate (PtdInsP3) and inositol 1,3,4,5-tetrakisphosphate (InsP4). Possesses a stoichiometry of two binding sites for InsP4 with identical affinity.

Tissue specificity

Highly expressed in placenta, spleen, kidney, skeletal muscle and adrenal gland. Weakly expressed in thyroid, liver, heart, lung, small intestine, peripheral blood leukocytes. Not detected in spinal cord, brain, stomach, trachea, colon, lymph node and bone marrow.

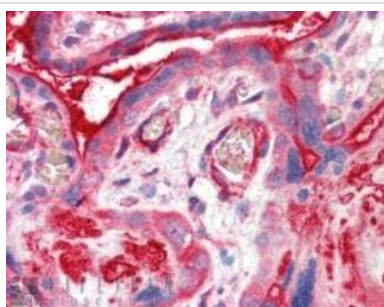
Sequence similarities

Contains 1 Arf-GAP domain.
 Contains 2 PH domains.

Cellular localization

Cytoplasm. Cell membrane. Constitutively associated with the plasma membrane. Excluded from the nucleus.

Images



ab26067 at 5ug/ml staining Centaurin alpha 2 in human placental tissue section by Immunohistochemistry (Formalin/PFA fixed paraffin-embedded sections). Tissue underwent antigen retrieval in steam with citrate buffer (pH 6.0). A AP-staining procedure was used for detection.

Immunohistochemistry (Formalin/PFA-fixed paraffin-embedded sections) - Anti-Centaurin alpha 2 antibody (ab26067)

Please note: All products are "FOR RESEARCH USE ONLY AND ARE NOT INTENDED FOR DIAGNOSTIC OR THERAPEUTIC USE"

Our Abpromise to you: Quality guaranteed and expert technical support

- Replacement or refund for products not performing as stated on the datasheet

- Valid for 12 months from date of delivery
- Response to your inquiry within 24 hours
- We provide support in Chinese, English, French, German, Japanese and Spanish
- Extensive multi-media technical resources to help you
- We investigate all quality concerns to ensure our products perform to the highest standards

If the product does not perform as described on this datasheet, we will offer a refund or replacement. For full details of the Abpromise, please visit <https://www.abcam.com/abpromise> or contact our technical team.

Terms and conditions

- Guarantee only valid for products bought direct from Abcam or one of our authorized distributors