

Product datasheet

Anti-Centrin 1 antibody ab156858

3 Images

Overview

Product name	Anti-Centrin 1 antibody
Description	Rabbit polyclonal to Centrin 1
Host species	Rabbit
Tested applications	Suitable for: WB, ICC/IF
Species reactivity	Reacts with: Mouse, Rat, Hamster, Human, Xenopus laevis Predicted to work with: Cow
Immunogen	Synthetic peptide conjugated to KLH, with a Cysteine residue linker corresponding to C terminal amino acids 155-168 of Human Centrin 1 (Uniprot ID: Q12798). Run BLAST with ExPASy Run BLAST with NCBI
Positive control	HeLa and MCF7 crude cell extracts.
General notes	<p>Reproducibility is key to advancing scientific discovery and accelerating scientists' next breakthrough.</p> <p>Abcam is leading the way with our range of recombinant antibodies, knockout-validated antibodies and knockout cell lines, all of which support improved reproducibility.</p> <p>We are also planning to innovate the way in which we present recommended applications and species on our product datasheets, so that only applications & species that have been tested in our own labs, our suppliers or by selected trusted collaborators are covered by our Abpromise™ guarantee.</p> <p>In preparation for this, we have started to update the applications & species that this product is Abpromise guaranteed for.</p> <p>We are also updating the applications & species that this product has been “predicted to work with,” however this information is not covered by our Abpromise guarantee.</p> <p>Applications & species from publications and Abreviews that have not been tested in our own labs or in those of our suppliers are not covered by the Abpromise guarantee.</p> <p>Please check that this product meets your needs before purchasing. If you have any questions, special requirements or concerns, please send us an inquiry and/or contact our Support team ahead of purchase. Recommended alternatives for this product can be found below, as well as customer reviews and Q&As.</p>

Properties

Form	Liquid
Storage instructions	Shipped at 4°C. Upon delivery aliquot and store at -20°C. Avoid freeze / thaw cycles.
Storage buffer	pH: 6 Constituents: 50% Glycerol (glycerin, glycerine), 49% PBS
Purity	Immunogen affinity purified
Clonality	Polyclonal
Isotype	IgG

Applications

Our [Abpromise guarantee](#) covers the use of **ab156858** in the following tested applications.

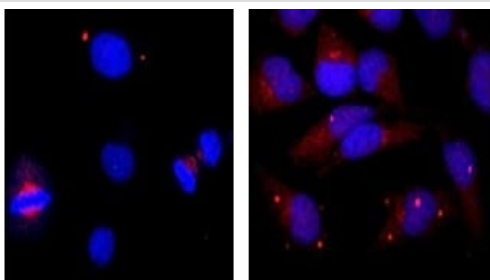
The application notes include recommended starting dilutions; optimal dilutions/concentrations should be determined by the end user.

Application	Abreviews	Notes
WB		1/1000. Predicted molecular weight: 20 kDa.
ICC/IF		1/200 - 1/500.

Target

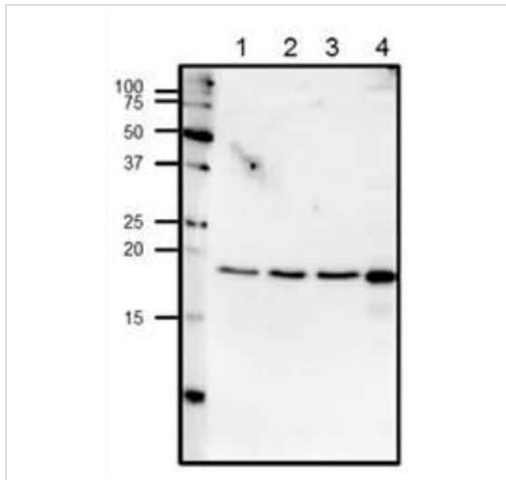
Function	Plays a fundamental role in microtubule-organizing center structure and function.
Sequence similarities	Belongs to the centrin family. Contains 4 EF-hand domains.
Cellular localization	Cytoplasm > cytoskeleton > centrosome. Centrosome of interphase and mitotic cells.

Images



Immunocytochemistry/ Immunofluorescence - Anti-Centrin 1 antibody (ab156858)

ab156858 staining Centrin 1 in the HeLa cell line by ICC/IF (Immunocytochemistry/immunofluorescence). Cells were fixed with 4% paraformaldehyde and permeabilized with 0.25% Triton X-100. Samples were incubated with primary antibody at a dilution of 1/100. An Alexa Fluor® 488-conjugated Goat anti-rabbit IgG polyclonal was used as the secondary antibody at a dilution of 1/1000. DAPI (Blue) was used as a nuclear counterstain.



Western blot - Anti-Centrin 1 antibody (ab156858)

All lanes : Anti-Centrin 1 antibody (ab156858) at 1/1000 dilution

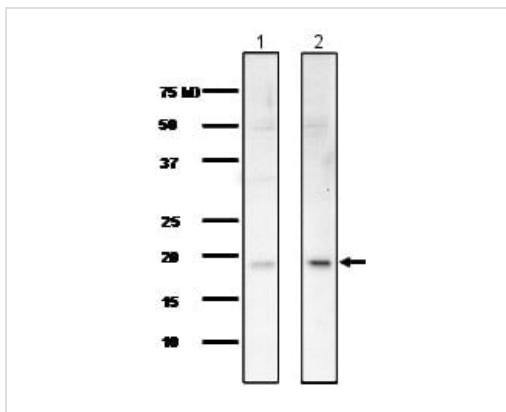
Lane 1 : HeLa cell lysate at 20 µg

Lane 2 : MCF7 cell lysate at 20 µg

Lane 3 : NIH3T3 cell lysate at 20 µg

Lane 4 : Xenopus eggs cell lysate at 50 µg

Predicted band size: 20 kDa



Western blot - Anti-Centrin 1 antibody (ab156858)

All lanes : Anti-Centrin 1 antibody (ab156858) at 1/1000 dilution

Lane 1 : HeLa crude cell lysate at 10 µg

Lane 2 : MCF7 crude cell lysate at 20 µg

Predicted band size: 20 kDa

Please note: All products are "FOR RESEARCH USE ONLY. NOT FOR USE IN DIAGNOSTIC PROCEDURES"

Our Abpromise to you: Quality guaranteed and expert technical support

- Replacement or refund for products not performing as stated on the datasheet
- Valid for 12 months from date of delivery
- Response to your inquiry within 24 hours
- We provide support in Chinese, English, French, German, Japanese and Spanish
- Extensive multi-media technical resources to help you
- We investigate all quality concerns to ensure our products perform to the highest standards

If the product does not perform as described on this datasheet, we will offer a refund or replacement. For full details of the Abpromise, please visit <https://www.abcam.com/abpromise> or contact our technical team.

Terms and conditions

- Guarantee only valid for products bought direct from Abcam or one of our authorized distributors