



Product datasheet

Anti-Centrin 3 antibody ab230172

3 Images

Overview

<b>Product name</b>	Anti-Centrin 3 antibody
<b>Description</b>	Rabbit polyclonal to Centrin 3
<b>Host species</b>	Rabbit
<b>Tested applications</b>	<b>Suitable for:</b> IHC-P, WB
<b>Species reactivity</b>	<b>Reacts with:</b> Mouse, Human
<b>Immunogen</b>	<p>Recombinant full length protein corresponding to Human Centrin 3 aa 1-167. Sequence:</p> <p>MSLALRSELVVDKTKRKKRRELSEEQKQEIKDAFELF            DTDKDEAIDYHEL            KVAMRALGFDVKKADV LKILKDYDREATGKITFEDFNE            VVTDWILERDPH            EEILKAFKLFDDDDSGKISLRNLRVARELGENMSDEE            LRAMIEEFDKDG DGEINQEEFIAIMTGDI</p> <p>Database link: <a href="#">O15182</a></p> <p style="text-align: right;"> <a href="#">Run BLAST with</a>       <a href="#">Run BLAST with</a></p>
<b>Positive control</b>	WB: Mouse gonadal tissue lysate. IHC-P: Human ovarian cancer and testis tissue.

Properties

<b>Form</b>	Liquid
<b>Storage instructions</b>	Shipped at 4°C. Store at +4°C short term (1-2 weeks). Upon delivery aliquot. Store at -20°C long term. Avoid freeze / thaw cycle.
<b>Storage buffer</b>	pH: 7.3 Preservative: 0.02% Sodium azide Constituents: PBS, 50% Glycerol
<b>Purity</b>	Immunogen affinity purified
<b>Clonality</b>	Polyclonal
<b>Isotype</b>	IgG

Applications

Our [Abpromise guarantee](#) covers the use of **ab230172** in the following tested applications.

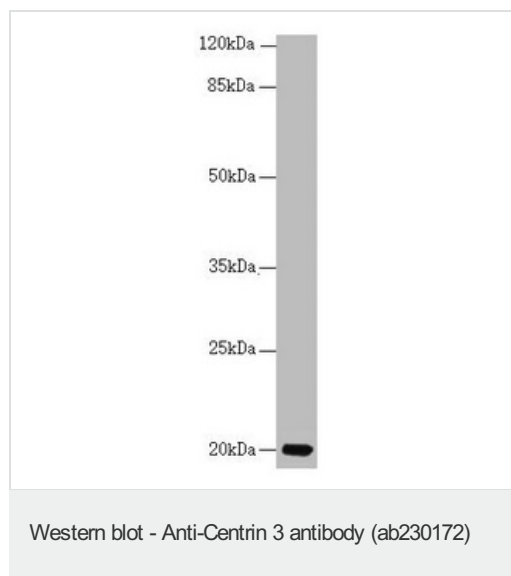
The application notes include recommended starting dilutions; optimal dilutions/concentrations should be determined by the end user.

Application	Abreviews	Notes
IHC-P		1/20 - 1/200.
WB		1/1000 - 1/5000. Detects a band of approximately 20 kDa (predicted molecular weight: 20 kDa).

## Target

<b>Function</b>	Plays a fundamental role in microtubule-organizing center structure and function.
<b>Sequence similarities</b>	Belongs to the centrin family. Contains 4 EF-hand domains.
<b>Cellular localization</b>	Cytoplasm > cytoskeleton > centrosome. Centrosome of interphase and mitotic cells.

## Images



Anti-Centrin 3 antibody (ab230172) at 1/1000 dilution + Mouse gonadal tissue lysate

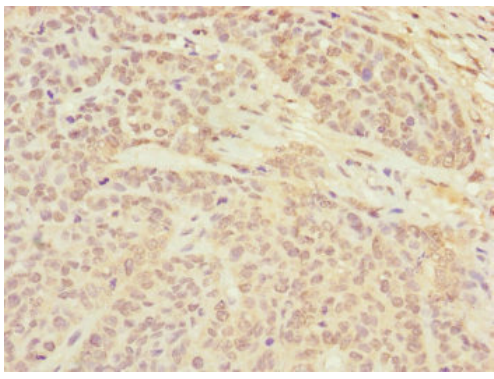
### Secondary

Goat polyclonal to rabbit IgG at 1/10000 dilution

Developed using the ECL technique.

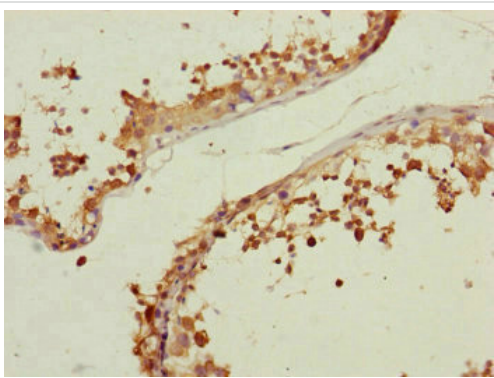
**Predicted band size:** 20 kDa

**Observed band size:** 20 kDa



Immunohistochemistry (Formalin/PFA-fixed paraffin-embedded sections) - Anti-Centrin 3 antibody (ab230172)

Paraffin-embedded human ovarian cancer tissue stained for Centrin 3 with ab230172 at 1/100 dilution in immunohistochemical analysis.



Immunohistochemistry (Formalin/PFA-fixed paraffin-embedded sections) - Anti-Centrin 3 antibody (ab230172)

Paraffin-embedded human testis tissue stained for Centrin 3 with ab230172 at 1/100 dilution in immunohistochemical analysis.

**Please note:** All products are "FOR RESEARCH USE ONLY. NOT FOR USE IN DIAGNOSTIC PROCEDURES"

### **Our Abpromise to you: Quality guaranteed and expert technical support**

---

- Replacement or refund for products not performing as stated on the datasheet
- Valid for 12 months from date of delivery
- Response to your inquiry within 24 hours
- We provide support in Chinese, English, French, German, Japanese and Spanish
- Extensive multi-media technical resources to help you
- We investigate all quality concerns to ensure our products perform to the highest standards

If the product does not perform as described on this datasheet, we will offer a refund or replacement. For full details of the Abpromise, please visit <https://www.abcam.com/abpromise> or contact our technical team.

### **Terms and conditions**

---

- Guarantee only valid for products bought direct from Abcam or one of our authorized distributors