


Product datasheet

Anti-CEP135 antibody - C-terminal ab196809

2 References 1 Image

Overview

Product name	Anti-CEP135 antibody - C-terminal
Description	Rabbit polyclonal to CEP135 - C-terminal
Host species	Rabbit
Specificity	ab196809 detects endogenous levels of total CEP135 protein.
Tested applications	Suitable for: WB
Species reactivity	Reacts with: Human Predicted to work with: Mouse 
Immunogen	Synthetic peptide within Human CEP135 (C terminal). The exact sequence is proprietary. Database link: Q66GS9
Positive control	COLO cell extracts

Properties

Form	Liquid
Storage instructions	Shipped at 4°C. Store at +4°C short term (1-2 weeks). Upon delivery aliquot. Store at -20°C long term. Avoid freeze / thaw cycle.
Storage buffer	pH: 7.40 Preservative: 0.02% Sodium azide Constituents: 49% PBS, 50% Glycerol, 0.87% Sodium chloride PBS is without Mg ²⁺ and Ca ²⁺
Purity	Immunogen affinity purified
Clonality	Polyclonal
Isotype	IgG

Applications

Our [Abpromise guarantee](#) covers the use of **ab196809** in the following tested applications.

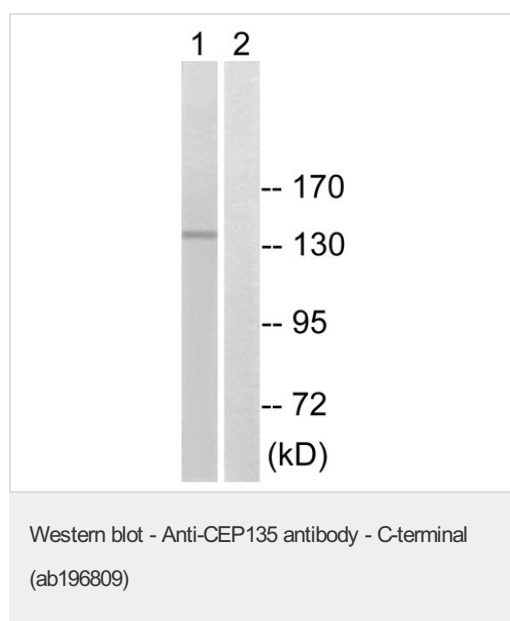
The application notes include recommended starting dilutions; optimal dilutions/concentrations should be determined by the end user.

Application	Abreviews	Notes
WB		1/500 - 1/3000. Predicted molecular weight: 134 kDa.

Target

Function	Centrosomal protein involved in centriole biogenesis. Acts as a scaffolding protein during early centriole biogenesis. Required for the targeting of centriole satellite proteins to centrosomes such as of PCM1, SSX2IP and CEP290 and recruitment of WRAP73 to centrioles. Also required for centriole-centriole cohesion during interphase by acting as a platform protein for CEP250 at the centriole.
Involvement in disease	Microcephaly 8, primary, autosomal recessive
Sequence similarities	Belongs to the CEP135/TSGA10 family.
Cellular localization	Cytoplasm, cytoskeleton, microtubule organizing center, centrosome, centriole. During centriole biogenesis, it is concentrated within the proximal lumen of both parental centrioles and procentrioles.

Images



All lanes : Anti-CEP135 antibody - C-terminal (ab196809) at 1/500 dilution

Lane 1 : COLO cell extract

Lane 2 : COLO cell extract with synthesized peptide

Predicted band size: 134 kDa

Please note: All products are "FOR RESEARCH USE ONLY. NOT FOR USE IN DIAGNOSTIC PROCEDURES"

Our Abpromise to you: Quality guaranteed and expert technical support

- Replacement or refund for products not performing as stated on the datasheet
- Valid for 12 months from date of delivery
- Response to your inquiry within 24 hours
- We provide support in Chinese, English, French, German, Japanese and Spanish

- Extensive multi-media technical resources to help you
- We investigate all quality concerns to ensure our products perform to the highest standards

If the product does not perform as described on this datasheet, we will offer a refund or replacement. For full details of the Abpromise, please visit <https://www.abcam.com/abpromise> or contact our technical team.

Terms and conditions

- Guarantee only valid for products bought direct from Abcam or one of our authorized distributors