

Product datasheet

Anti-CEP70 antibody ab237801

3 Images

Overview

Product name	Anti-CEP70 antibody
Description	Rabbit polyclonal to CEP70
Host species	Rabbit
Tested applications	Suitable for: WB, IHC-P, ICC/IF
Species reactivity	Reacts with: Mouse, Human
Immunogen	Recombinant fragment corresponding to Human CEP70 aa 99-276. Database link: Q8NHQ1
Positive control	WB: PC-3 whole cell lysate; Human placenta lysate; Mouse heart and kidney lysates. IHC-P: Human pancreatic cancer tissue. ICC/IF: MCF7 cells.

Properties

Form	Liquid
Storage instructions	Shipped at 4°C. Store at +4°C short term (1-2 weeks). Upon delivery aliquot. Store at -20°C long term. Avoid freeze / thaw cycle.
Storage buffer	pH: 7.40 Preservative: 0.03% Proclin Constituents: 50% Glycerol, PBS
Purity	Protein G purified
Purification notes	Purity greater than 95%.
Clonality	Polyclonal
Isotype	IgG

Applications

Our [Abpromise guarantee](#) covers the use of **ab237801** in the following tested applications.

The application notes include recommended starting dilutions; optimal dilutions/concentrations should be determined by the end user.

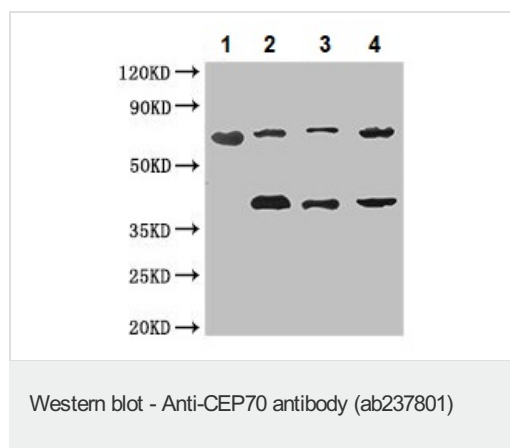
Application	Abreviews	Notes
WB		1/1000 - 1/5000. Predicted molecular weight: 70 kDa.

Application	Abreviews	Notes
IHC-P		1/20 - 1/200.
ICC/IF		1/50 - 1/200.

Target

Sequence similarities	Contains 1 TPR repeat.
Cellular localization	Cytoplasm > cytoskeleton > centrosome.

Images



All lanes : Anti-CEP70 antibody (ab237801) at 1/1000 dilution

Lane 1 : Human placenta lysate

Lane 2 : PC-3 (human prostate adenocarcinoma cell line) whole cell lysate

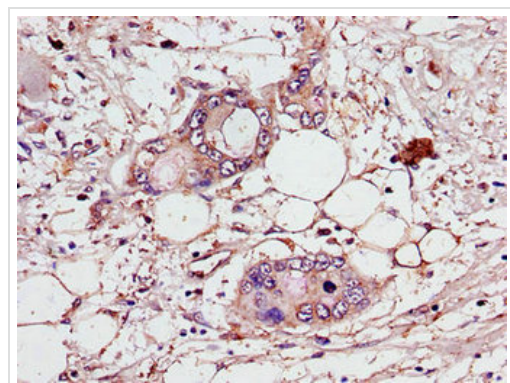
Lane 3 : Mouse heart lysate

Lane 4 : Mouse kidney lysate

Secondary

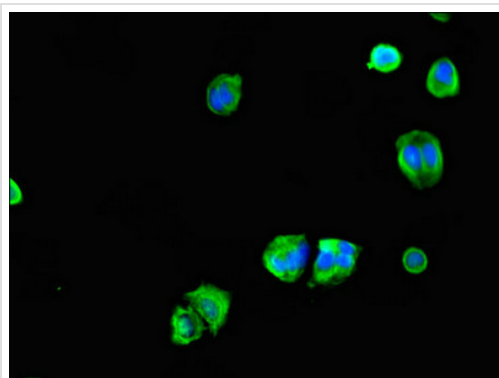
All lanes : Goat polyclonal to rabbit IgG at 1/50000 dilution

Predicted band size: 70 kDa



Paraffin-embedded human pancreatic cancer tissue stained for CEP70 using ab237801 at 1/100 dilution in immunohistochemical analysis.

Immunohistochemistry (Formalin/PFA-fixed paraffin-embedded sections) - Anti-CEP70 antibody (ab237801)



Immunocytochemistry/ Immunofluorescence - Anti-CEP70 antibody (ab237801)

MCF7 (human breast adenocarcinoma cell line) cells stained for CEP70 (green) using ab237801 at 1/100 dilution in ICC/IF, followed by Alexa Fluor 488[®] conjugated Goat Anti-Rabbit IgG (H+L).

Please note: All products are "FOR RESEARCH USE ONLY. NOT FOR USE IN DIAGNOSTIC PROCEDURES"

Our Abpromise to you: Quality guaranteed and expert technical support

- Replacement or refund for products not performing as stated on the datasheet
- Valid for 12 months from date of delivery
- Response to your inquiry within 24 hours
- We provide support in Chinese, English, French, German, Japanese and Spanish
- Extensive multi-media technical resources to help you
- We investigate all quality concerns to ensure our products perform to the highest standards

If the product does not perform as described on this datasheet, we will offer a refund or replacement. For full details of the Abpromise, please visit <https://www.abcam.com/abpromise> or contact our technical team.

Terms and conditions

- Guarantee only valid for products bought direct from Abcam or one of our authorized distributors