

Product datasheet

Anti-CEP95 antibody ab230305

3 Images

Overview

<b>Product name</b>	Anti-CEP95 antibody
<b>Description</b>	Rabbit polyclonal to CEP95
<b>Host species</b>	Rabbit
<b>Tested applications</b>	<b>Suitable for:</b> WB, IHC-P
<b>Species reactivity</b>	<b>Reacts with:</b> Mouse, Human
<b>Immunogen</b>	Recombinant fragment corresponding to Human CEP95 aa 582-821.

Sequence:

```

TLSKMWKQQAQVEQLKKECRENRSKSKKLQDEIEEALRR
HDLLTTLVKKE
YEHNKRLQDFKDCIRRQRLTQSKIKENRQQIVRARKYYDDY
RVQLCAKMM
RMRTREEMIFKKLFEGLNIQKQLRDLRNYAKEKRDEQR
RRHQDELDISM
ENYKDKQFSLLAEAISQEHQELKAREKSQAQTLHKVKREL
RSKMEKEIQQ
LQDMITQNDDDVFFRELEAERFRSRLQLASFQYSKSPSL
    
```

Database link: [Q96GE4](#)

 [Run BLAST with](#)

 [Run BLAST with](#)

**Positive control** WB: Mouse heart tissue lysate. IHC-P: Human bladder and colon cancer tissues.

**General notes**

Reproducibility is key to advancing scientific discovery and accelerating scientists' next breakthrough.

Abcam is leading the way with our range of recombinant antibodies, knockout-validated antibodies and knockout cell lines, all of which support improved reproducibility.

We are also planning to innovate the way in which we present recommended applications and species on our product datasheets, so that only applications & species that have been tested in our own labs, our suppliers or by selected trusted collaborators are covered by our Abpromise™ guarantee.

In preparation for this, we have started to update the applications & species that this product is Abpromise guaranteed for.

We are also updating the applications & species that this product has been “predicted to work with,” however this information is not covered by our Abpromise guarantee.

Applications & species from publications and Abreviews that have not been tested in our own labs or in those of our suppliers are not covered by the Abpromise guarantee.

Please check that this product meets your needs before purchasing. If you have any questions, special requirements or concerns, please send us an inquiry and/or contact our Support team ahead of purchase. Recommended alternatives for this product can be found below, as well as customer reviews and Q&As.

## Properties

---

<b>Form</b>	Liquid
<b>Storage instructions</b>	Shipped at 4°C. Store at +4°C short term (1-2 weeks). Upon delivery aliquot. Store at -20°C long term. Avoid freeze / thaw cycle.
<b>Storage buffer</b>	pH: 7.30 Preservative: 0.02% Sodium azide Constituents: PBS, 50% Glycerol (glycerin, glycerine)
<b>Purity</b>	Immunogen affinity purified
<b>Clonality</b>	Polyclonal
<b>Isotype</b>	IgG

## Applications

---

Our [Abpromise guarantee](#) covers the use of **ab230305** in the following tested applications.

The application notes include recommended starting dilutions; optimal dilutions/concentrations should be determined by the end user.

Application	Abreviews	Notes
WB		1/1000 - 1/5000. Detects a band of approximately 95 kDa (predicted molecular weight: 95, 77 kDa).
IHC-P		1/20 - 1/200.

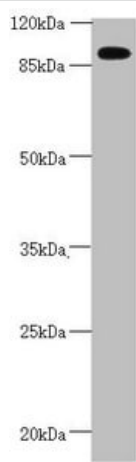
## Target

---

<b>Post-translational modifications</b>	Phosphorylated upon DNA damage, probably by ATM or ATR.
<b>Cellular localization</b>	Cytoplasm > cytoskeleton > centrosome. Cytoplasm > cytoskeleton > spindle pole.

## Images

---



Western blot - Anti-CEP95 antibody (ab230305)

Anti-CEP95 antibody (ab230305) at 1/1000 dilution + Mouse heart tissue lysate

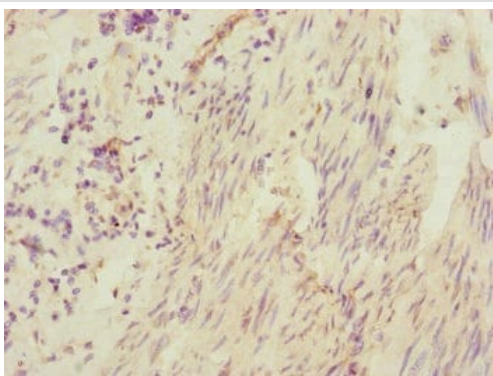
**Secondary**

Goat polyclonal to rabbit IgG at 1/10000 dilution

**Predicted band size:** 95, 77 kDa

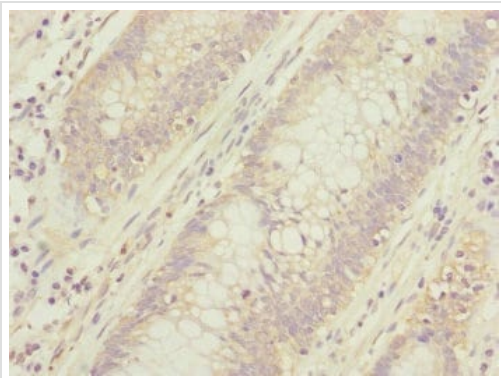
**Observed band size:** 95 kDa

[why is the actual band size different from the predicted?](#)



Immunohistochemistry (Formalin/PFA-fixed paraffin-embedded sections) - Anti-CEP95 antibody (ab230305)

Paraffin-embedded human bladder cancer tissue stained for CEP95 using ab230305 at 1/100 dilution in immunohistochemical analysis.



Paraffin-embedded human colon-cancer tissue stained for CEP95 using ab230305 at 1/100 dilution in immunohistochemical analysis.

Immunohistochemistry (Formalin/PFA-fixed paraffin-embedded sections) - Anti-CEP95 antibody (ab230305)

**Please note:** All products are "FOR RESEARCH USE ONLY. NOT FOR USE IN DIAGNOSTIC PROCEDURES"

### Our Abpromise to you: Quality guaranteed and expert technical support

---

- Replacement or refund for products not performing as stated on the datasheet
- Valid for 12 months from date of delivery
- Response to your inquiry within 24 hours
- We provide support in Chinese, English, French, German, Japanese and Spanish
- Extensive multi-media technical resources to help you
- We investigate all quality concerns to ensure our products perform to the highest standards

If the product does not perform as described on this datasheet, we will offer a refund or replacement. For full details of the Abpromise, please visit <https://www.abcam.com/abpromise> or contact our technical team.

### Terms and conditions

---

- Guarantee only valid for products bought direct from Abcam or one of our authorized distributors