

Product datasheet

Anti-Cer1 antibody ab103122

3 Images

Overview

Product name	Anti-Cer1 antibody
Description	Rabbit polyclonal to Cer1
Host species	Rabbit
Tested applications	Suitable for: WB
Species reactivity	Reacts with: Mouse, Human
Immunogen	Full length protein, corresponding to amino acids 1-267 of Human Cer1 (AAH69491.1).
Positive control	Mouse kidney tissue lysate; HeLa cell line lysate; CER1 transfected 293T cell line lysate

Properties

Form	Liquid
Storage instructions	Shipped at 4°C. Upon delivery aliquot. Store at -20°C or -80°C. Avoid freeze / thaw cycle.
Storage buffer	pH: 7.20 Constituent: 2.68% PBS
Purity	Protein A purified
Clonality	Polyclonal
Isotype	IgG

Applications

Our [Abpromise guarantee](#) covers the use of **ab103122** in the following tested applications.

The application notes include recommended starting dilutions; optimal dilutions/concentrations should be determined by the end user.

Application	Abreviews	Notes
WB		Use a concentration of 1 µg/ml. Predicted molecular weight: 30 kDa.

Target

Function	Cytokine that may play a role in anterior neural induction and somite formation during
-----------------	--

embryogenesis in part through a BMP-inhibitory mechanism. Can regulate Nodal signaling during gastrulation as well as the formation and patterning of the primitive streak.

Sequence similarities

Belongs to the DAN family.

Contains 1 CTCK (C-terminal cystine knot-like) domain.

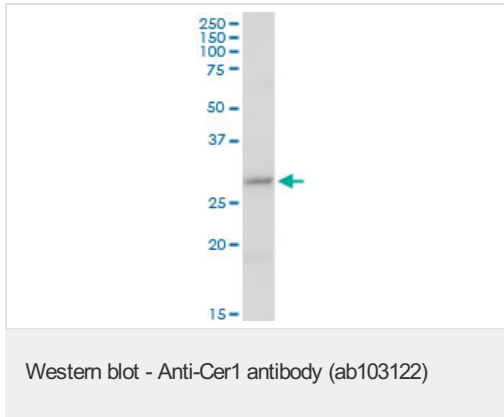
Post-translational modifications

N-glycosylated.

Cellular localization

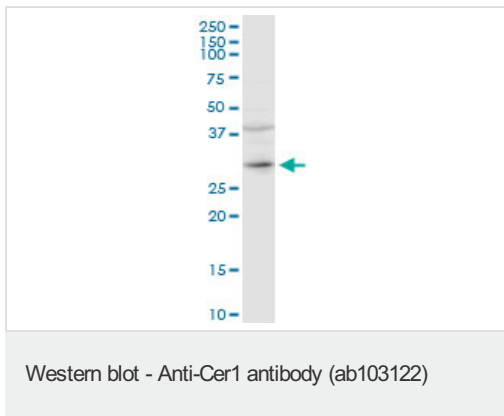
Secreted.

Images



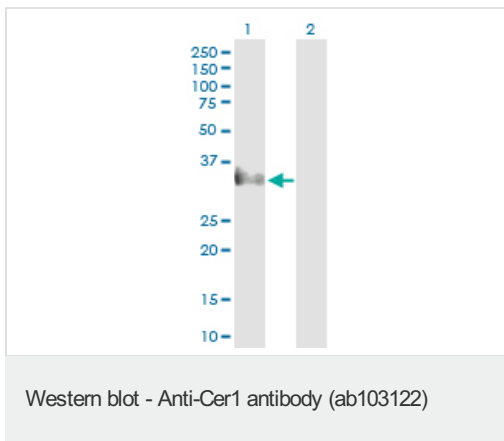
Anti-Cer1 antibody (ab103122) at 1 $\mu\text{g/ml}$ + Mouse kidney tissue lysate at 50 μg

Predicted band size: 30 kDa



Anti-Cer1 antibody (ab103122) at 1 $\mu\text{g/ml}$ + HeLa cell line lysate at 50 μg

Predicted band size: 30 kDa



All lanes : Anti-Cer1 antibody (ab103122) at 1 $\mu\text{g/ml}$

Lane 1 : CER1 transfected 293T cell line

Lane 2 : Non transfected 293T cell line

Lysates/proteins at 25 μg per lane.

Predicted band size: 30 kDa

Please note: All products are "FOR RESEARCH USE ONLY. NOT FOR USE IN DIAGNOSTIC PROCEDURES"

Our Abpromise to you: Quality guaranteed and expert technical support

- Replacement or refund for products not performing as stated on the datasheet
- Valid for 12 months from date of delivery
- Response to your inquiry within 24 hours

- We provide support in Chinese, English, French, German, Japanese and Spanish
- Extensive multi-media technical resources to help you
- We investigate all quality concerns to ensure our products perform to the highest standards

If the product does not perform as described on this datasheet, we will offer a refund or replacement. For full details of the Abpromise, please visit <https://www.abcam.com/abpromise> or contact our technical team.

Terms and conditions

- Guarantee only valid for products bought direct from Abcam or one of our authorized distributors