

## Product datasheet

# Anti-Ceruloplasmin antibody ab135649

★★★★☆ 1 Abreviews 1 References 3 Images

### Overview

<b>Product name</b>	Anti-Ceruloplasmin antibody
<b>Description</b>	Rabbit polyclonal to Ceruloplasmin
<b>Host species</b>	Rabbit
<b>Tested applications</b>	<b>Suitable for:</b> WB, IHC-P, Flow Cyt
<b>Species reactivity</b>	<b>Reacts with:</b> Mouse, Human
<b>Immunogen</b>	Synthetic peptide conjugated to KLH, corresponding to a region within internal sequence amino acids 555-584 of Human Ceruloplasmin.
<b>Positive control</b>	Mouse lung tissue lysate; Human hepatocarcinoma tissue; HepG2 cells.

### Properties

<b>Form</b>	Liquid
<b>Storage instructions</b>	Shipped at 4°C. Store at +4°C short term (1-2 weeks). Upon delivery aliquot. Store at -20°C long term.
<b>Storage buffer</b>	Preservative: 0.09% Sodium azide Constituent: 99% PBS
<b>Purity</b>	Ammonium Sulphate Precipitation
<b>Purification notes</b>	ab135649 is prepared by Saturated Ammonium Sulfate (SAS) precipitation followed by dialysis against PBS.
<b>Clonality</b>	Polyclonal
<b>Isotype</b>	IgG

### Applications

Our [Abpromise guarantee](#) covers the use of **ab135649** in the following tested applications.

The application notes include recommended starting dilutions; optimal dilutions/concentrations should be determined by the end user.

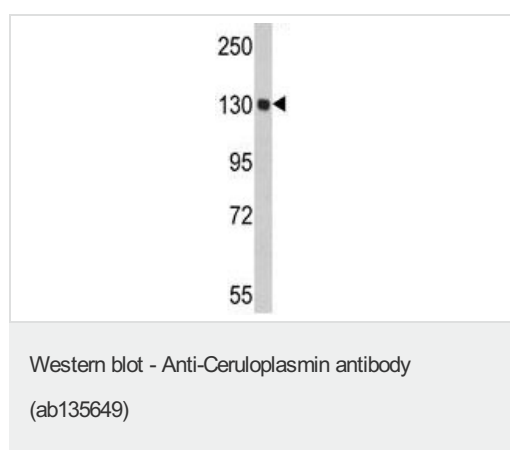
Application	Abreviews	Notes
WB	★★★★☆	1/50 - 1/100. Predicted molecular weight: 122 kDa.

Application	Abreviews	Notes
IHC-P		1/50 - 1/100. Perform heat mediated antigen retrieval with citrate buffer pH 6 before commencing with IHC staining protocol.
Flow Cyt		1/10 - 1/50. <a href="#">ab171870</a> - Rabbit polyclonal IgG, is suitable for use as an isotype control with this antibody.

## Target

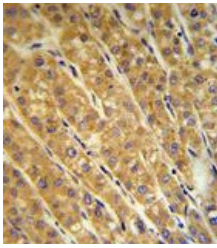
<b>Function</b>	Ceruloplasmin is a blue, copper-binding (6-7 atoms per molecule) glycoprotein. It has ferroxidase activity oxidizing Fe(2+) to Fe(3+) without releasing radical oxygen species. It is involved in iron transport across the cell membrane.
<b>Tissue specificity</b>	Expressed by the liver and secreted in plasma.
<b>Involvement in disease</b>	Defects in CP are the cause of aceruloplasminemia (ACERULOP) [MIM:604290]. It is an autosomal recessive disorder of iron metabolism characterized by iron accumulation in the brain as well as visceral organs. Clinical features consist of the triad of retinal degeneration, diabetes mellitus and neurological disturbances. Note=Ceruloplasmin levels are decreased in Wilson disease, in which copper cannot be incorporated into ceruloplasmin in liver because of defects in the copper-transporting ATPase 2.
<b>Sequence similarities</b>	Belongs to the multicopper oxidase family. Contains 3 F5/8 type A domains. Contains 6 plastocyanin-like domains.
<b>Cellular localization</b>	Secreted.

## Images



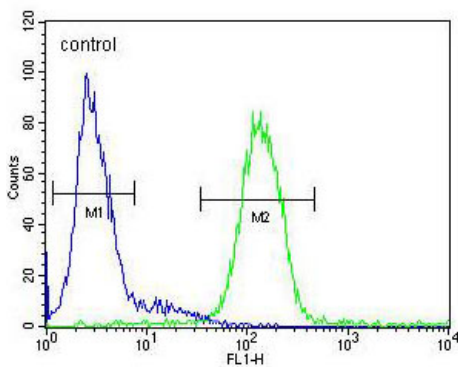
Anti-Ceruloplasmin antibody (ab135649) at 1/50 dilution + Mouse lung tissue lysate at 35 µg

**Predicted band size:** 122 kDa



Immunohistochemical analysis of paraffin-embedded Human hepatocarcinoma labelling Ceruloplasmin with ab135649 at 1/50 dilution followed by peroxidase conjugation of the secondary antibody and DAB staining.

Immunohistochemistry (Formalin/PFA-fixed paraffin-embedded sections) - Anti-Ceruloplasmin antibody (ab135649)



Flow cytometric analysis of HepG2 cells labelling Ceruloplasmin with ab135649 at 1/10 dilution (green) compared to a negative control cell (blue). FITC-conjugated goat-anti-rabbit secondary antibodies were used for the analysis.

Flow Cytometry - Anti-Ceruloplasmin antibody (ab135649)

**Please note:** All products are "FOR RESEARCH USE ONLY. NOT FOR USE IN DIAGNOSTIC PROCEDURES"

### Our Abpromise to you: Quality guaranteed and expert technical support

- Replacement or refund for products not performing as stated on the datasheet
- Valid for 12 months from date of delivery
- Response to your inquiry within 24 hours
- We provide support in Chinese, English, French, German, Japanese and Spanish
- Extensive multi-media technical resources to help you
- We investigate all quality concerns to ensure our products perform to the highest standards

If the product does not perform as described on this datasheet, we will offer a refund or replacement. For full details of the Abpromise, please visit <https://www.abcam.com/abpromise> or contact our technical team.

### Terms and conditions

- 
- Guarantee only valid for products bought direct from Abcam or one of our authorized distributors